



Offered for sale with no forward chain

Offers great value for money

Spacious, well presented lounge with lots of natural light

Three bedrooms including a large master bedroom

Few minutes to the town centre and harbour

Perfect for first time buyers, couples and families

The whole property has clearly been lovingly maintained

Well maintained kitchen with plenty of storage

Pleasant garden to the front and large garden to the rear

Several schools are within easy reach

This charming 3-bedroom terraced house is the perfect find for first-time buyers, couples, families, or anyone looking to downsize. Offered for sale with no forward chain, it presents a fantastic opportunity to invest in your dream home. Boasting great value for money, the property features a spacious and well-presented lounge flooded with natural light, creating a welcoming ambience. The entire property has clearly been lovingly maintained, showcasing a well-maintained kitchen with ample storage and a good-sized shower room to cater to your daily needs. The three bedrooms, including a large master bedroom, offer comfortable spaces for relaxation.

Outside, the property delights with a pleasant garden at the front and a large, thoughtfully designed garden at the rear, facilitating ease of maintenance. Complete with a shed, a patio for al fresco dining, and fencing around for added privacy, this outdoor space is a true sanctuary. Located just a few minutes' drive from Maryport town centre, residents will enjoy easy access to a wide array of shops, cafes, and amenities. For leisurely moments, Maryport harbour provides a picturesque setting to soak in the stunning views towards Scotland while enjoying a coffee with friends. Families will appreciate the proximity to several schools, including Ewanrigg Junior School and Our Lady & St Patrick's, making this property an ideal choice for a growing family.

The communal, private, and spacious garden at the rear of the building presents the perfect setting for outdoor entertaining, adding a touch of charm to this already delightful property. This inviting home offers a blend of comfort, convenience, and tranquillity, providing a serene retreat amidst the bustling city. Don't miss this opportunity to make this property your own and create lasting memories in its warm and welcoming spaces.



SELLING WITH FIRST CHOICE MOVE

First Choice Move began in 2010 from humble beginnings—from a kitchen table in Egremont. Built on family values, hard work, and a passion for property, we have grown to become the largest estate agency in West Cumbria. As a family-run business, we believe in combining traditional estate agency values with the very latest marketing techniques to ensure every property gets maximum exposure. From high-quality photography, 3D tours, drone photography, videos and professional floorplans to online advertising and social media campaigns, we use a tailored approach to attract the right buyers. Our commitment to excellence has earned us multiple national, industry-recognised awards, a testament to our dedication to delivering outstanding service and results. We are more than just an estate agency—we're a trusted partner for buyers and sellers across West Cumbria, combining innovation with personal service to help you move with confidence.

MORTGAGES

Need help finding the right mortgage for your needs? First Choice Move Mortgage Services are part of the Mortgage Advice Bureau network, one of the UK's largest award-winning mortgage brokers. We can search from a selection of over 90 different lenders with over 12,000 different mortgages, including exclusive deals only available through us, to find the right deal for you. Our advice will be specifically tailored to your needs and circumstances, which could be for a first-time buyer, home-mover, or for remortgaging or investing in property. Contact us on 01946 413001 to arrange a free consultation with one of our experienced and dedicated in house mortgage and protection advisers. You may have to pay an early repayment charge to your existing lender if you re-mortgage. There may be a fee for mortgage advice. The actual amount you pay will depend upon your circumstances. The fee is up to 1% but a typical fee is 0.3% of the amount borrowed.

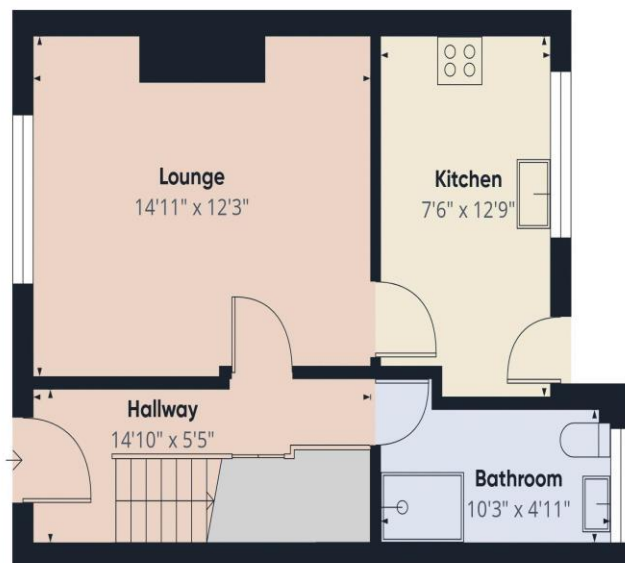
NOTE

Please note that all measurements have been taken using a laser tape measure which may be subject to a small margin of error. Some photos may have been taken with a wide-angle camera lens. First Choice Move has not tested any apparatus, equipment, fixtures and fittings or services and so cannot verify that they are in working order or fit for the purpose. A buyer is advised to obtain verification from their solicitor or surveyor. References to the tenure of a property are based on information supplied by the Seller. The Agent has not had sight of the title documents.









Ground Floor



Floor 1

Approximate total area[®]
777 ft²

(1) Excluding balconies and terraces

While every attempt has been made to ensure accuracy, all measurements are approximate, not to scale. This floor plan is for illustrative purposes only.

Calculations are based on RICS IPMS 3C standard.

GIRAFFE360