



Offered for sale with no forward chain

Spacious open plan lounge diner

Large four piece first floor bathroom

Walking distance to the town centre

Easy access to neighbouring towns

Traditional two bedroom terraced home

Contemporary modern kitchen with high gloss units

Popular residential street

Perfect for first time buyers, couples or downsizers

Short drive to western lakes and fells

Welcome to this charming two bedroom terraced house located on popular residential road, offered for sale with no forward chain. This lovely traditional terraced home is deceptively spacious and caters to a variety of needs, whether you're a first-time buyer, a couple, or someone looking to downsize. Nestled just a short walk from the town centre, where you'll find plenty of shops and amenities, this property also offers easy access to a local path and cycle route for those who enjoy outdoor activities. Situated on the outskirts of town, you're within easy driving distance of Cumbria's stunning coastline and famous fells and lakes, making it a great choice for a second home.

Stepping inside, you're greeted by a large open plan lounge diner flooded with natural light from a fully glazed door that leads to the rear yard. The beautiful oak staircase leads to the first floor where you'll find two well-presented double bedrooms. The stylish kitchen, located at the rear of the ground floor, boasts contrasting black and white high gloss units, adding a contemporary touch to the traditional setting. The generous first-floor bathroom features a four-piece suite with a walk-in shower and a separate bath, perfect for unwinding after a long day.

Outside, the property offers a low maintenance enclosed rear yard and on-street parking at the front. Don't miss the opportunity to make this charming terraced house your own and enjoy the best of both worlds – a peaceful retreat with all the amenities you need just a stone's throw away.



SELLING WITH FIRST CHOICE MOVE

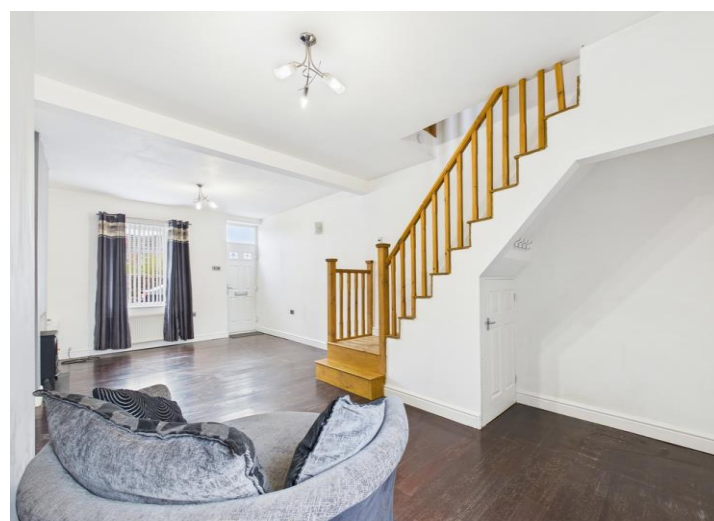
First Choice Move began in 2010 from humble beginnings—from a kitchen table in Egremont. Built on family values, hard work, and a passion for property, we have grown to become the largest estate agency in West Cumbria. As a family-run business, we believe in combining traditional estate agency values with the very latest marketing techniques to ensure every property gets maximum exposure. From high-quality photography, 3D tours, drone photography, videos and professional floorplans to online advertising and social media campaigns, we use a tailored approach to attract the right buyers. Our commitment to excellence has earned us multiple national, industry-recognised awards, a testament to our dedication to delivering outstanding service and results. We are more than just an estate agency—we're a trusted partner for buyers and sellers across West Cumbria, combining innovation with personal service to help you move with confidence.

MORTGAGES

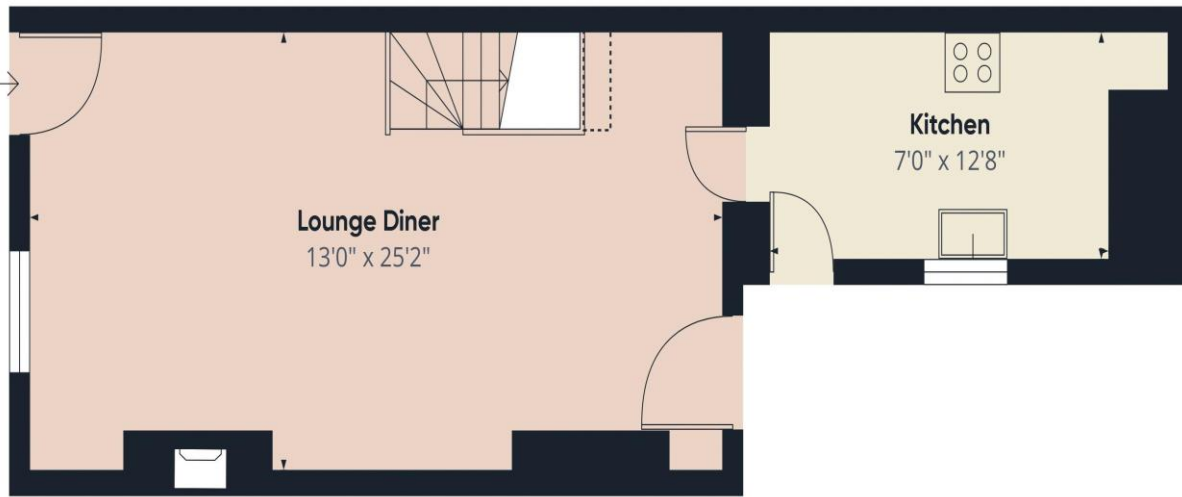
Need help finding the right mortgage for your needs? First Choice Move Mortgage Services are part of the Mortgage Advice Bureau network, one of the UK's largest award-winning mortgage brokers. We can search from a selection of over 90 different lenders with over 12,000 different mortgages, including exclusive deals only available through us, to find the right deal for you. Our advice will be specifically tailored to your needs and circumstances, which could be for a first-time buyer, home-mover, or for remortgaging or investing in property. Contact us on 01946 413001 to arrange a free consultation with one of our experienced and dedicated in house mortgage and protection advisers. You may have to pay an early repayment charge to your existing lender if you re-mortgage. There may be a fee for mortgage advice. The actual amount you pay will depend upon your circumstances. The fee is up to 1% but a typical fee is 0.3% of the amount borrowed.

NOTE

Please note that all measurements have been taken using a laser tape measure which may be subject to a small margin of error. Some photos may have been taken with a wide-angle camera lens. First Choice Move has not tested any apparatus, equipment, fixtures and fittings or services and so cannot verify that they are in working order or fit for the purpose. A buyer is advised to obtain verification from their solicitor or surveyor. References to the tenure of a property are based on information supplied by the Seller. The Agent has not had sight of the title documents.







Ground Floor



Floor 1



Approximate total area⁽¹⁾
831.4 ft²

Reduced headroom
2.65 ft²

(1) Excluding balconies and terraces

Reduced headroom
..... Below 5 ft

While every attempt has been made to ensure accuracy, all measurements are approximate, not to scale. This floor plan is for illustrative purposes only.

Calculations are based on RICS IPMS 3C standard.

GIRAFFE360