



- On the features and convenience of a spacious modern home**
- Impressive and modern kitchen/diner with integrated appliances**
- Stylish master ensuite, bathroom plus downstairs WC**
- Large drive and pitched roof garage**
- Built by the award winning developer Story Homes**
- Large lounge with French doors opening to the garden**
- Boasts four space bedrooms**
- Low maintenance garden with pergola and large patio area**
- Enjoys delightful views towards the fells**
- Located in a sought after and attractive development**

Nestled within the sought-after and attractive development, this immaculately presented 4-bedroom detached house offers the epitome of modern living. Designed and built by the award-winning developer, Story Homes, this property exudes quality and style throughout.

Upon entering the property, you are greeted by a spacious lounge area that features French doors opening out to the garden, inviting natural light to flow through the space. The large lounge provides the perfect setting for both relaxation and entertaining guests.

The heart of this home lies in the impressive and modern kitchen/diner, complete with integrated appliances and ample storage space. The kitchen seamlessly flows into the dining area, creating a sociable space ideal for family meals or hosting dinner parties. For added convenience, a separate utility room is also available.

Boasting four generously sized bedrooms, including a master ensuite, this property offers comfortable and flexible living accommodation for a growing family or those requiring extra space for guests. The rear bedrooms offer captivating views towards the stunning Cumbrian fells, providing a serene backdrop for peaceful nights and lazy mornings.

In addition to the stylish master ensuite, the property also features a well-appointed family bathroom and a downstairs WC, ensuring that practicality meets luxury in every aspect of this home.

Step outside to discover a low maintenance garden that has been thoughtfully designed to provide a tranquil outdoor retreat. Complete with a pergola, large patio area, raised beds, and a good-sized lawned area, the garden offers the perfect space for al fresco dining or enjoying a morning coffee in the sunshine. The garden is securely fenced around with gated access, providing privacy and security for all.

For those in need of storage or parking space, a large drive and a pitched roof garage offer plenty of room for multiple vehicles or additional storage solutions. The property also benefits from the remaining warranty provided by the developer, giving peace of mind to the new homeowners.

Conveniently located within close proximity to numerous schools and with easy access to Whitehaven town centre, this property offers a perfect balance between peaceful suburban living and urban convenience. Whether you are looking for a place to call home or an investment opportunity, this property ticks all the boxes for modern, comfortable living in a desirable location.

Don't miss out on the chance to make this stunning property your own and experience the luxurious lifestyle it has to offer. Arrange a viewing today and discover the endless possibilities that await in this exceptional home.



SELLING WITH FIRST CHOICE MOVE

First Choice Move began in 2010 from humble beginnings—from a kitchen table in Egremont. Built on family values, hard work, and a passion for property, we have grown to become the largest estate agency in West Cumbria. As a family-run business, we believe in combining traditional estate agency values with the very latest marketing techniques to ensure every property gets maximum exposure. From high-quality photography, 3D tours, drone photography, videos and professional floorplans to online advertising and social media campaigns, we use a tailored approach to attract the right buyers. Our commitment to excellence has earned us multiple national, industry-recognised awards, a testament to our dedication to delivering outstanding service and results. We are more than just an estate agency—we're a trusted partner for buyers and sellers across West Cumbria, combining innovation with personal service to help you move with confidence.



MORTGAGES

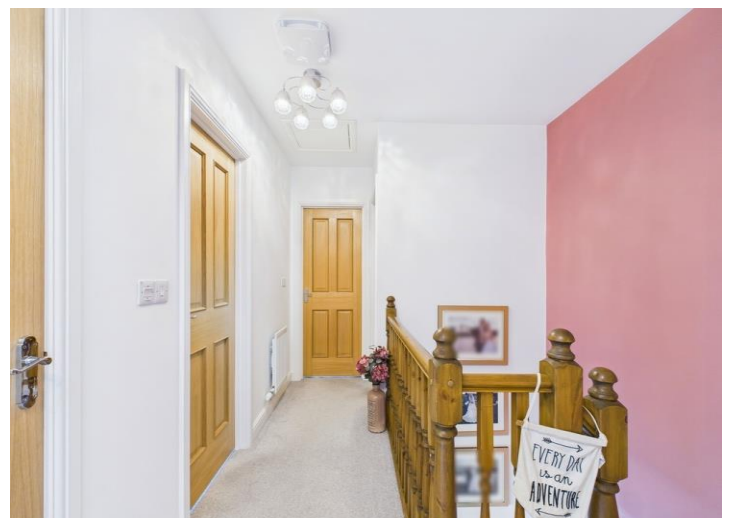
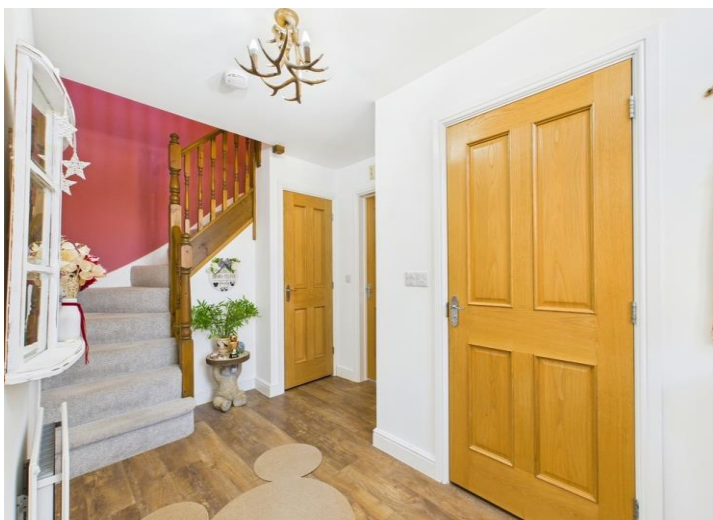
Need help finding the right mortgage for your needs? First Choice Move Mortgage Services are part of the Mortgage Advice Bureau network, one of the UK's largest award-winning mortgage brokers. We can search from a selection of over 90 different lenders with over 12,000 different mortgages, including exclusive deals only available through us, to find the right deal for you. Our advice will be specifically tailored to your needs and circumstances, which could be for a first-time buyer, home-mover, or for remortgaging or investing in property. Contact us on 01946 413001 to arrange a free consultation with one of our experienced and dedicated in house mortgage and protection advisers. You may have to pay an early repayment charge to your existing lender if you re-mortgage There may be a fee for mortgage advice. The actual amount you pay will depend upon your circumstances. The fee is up to 1% but a typical fee is 0.3% of the amount borrowed.



NOTE

Please note that all measurements have been taken using a laser tape measure which may be subject to a small margin of error. Some photos may have been taken with a wide-angle camera lens. First Choice Move has not tested any apparatus, equipment, fixtures and fittings or services and so cannot verify that they are in working order or fit for the purpose. A buyer is advised to obtain verification from their solicitor or surveyor. References to the tenure of a property are based on information supplied by the Seller. The Agent has not had sight of the title documents.



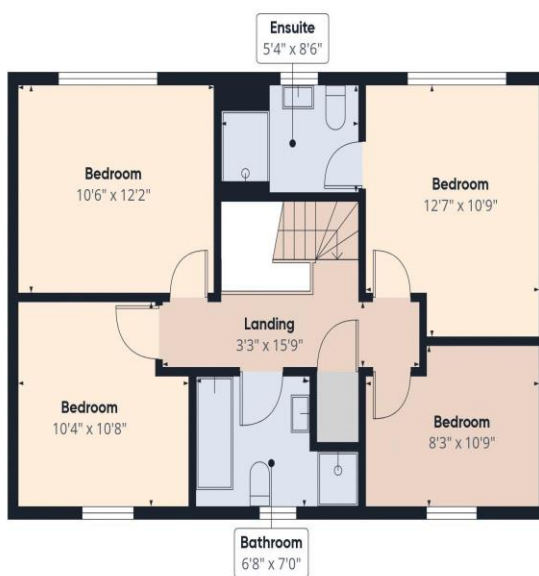




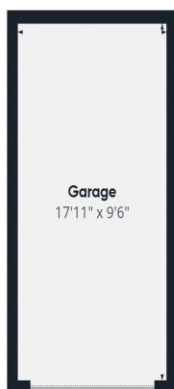




Ground Floor Building 1



Floor 1 Building 1



Ground Floor Building 2



Approximate total area[†]
1452.17 ft²

(1) Excluding balconies and terraces

While every attempt has been made to ensure accuracy, all measurements are approximate, not to scale. This floor plan is for illustrative purposes only.

Calculations are based on RICS IPMS 3C standard.

GIRAFFE360