



Deceptively spacious semi detached property in Hensingham

Great base for those working at the West Cumberland Hospital

Spacious lounge with wood effect flooring and modern fireplace

The property benefits from two well presented bedrooms

Featuring a first floor bathroom and a ground floor WC

Ideal purchase for first time buyers, couples or investors

Beautifully presented throughout and ready to move into

The kitchen is in great condition and benefits from a large, pantry style cupboard

The master bedroom is generously sized and features a built in cupboard

Well maintained front and rear gardens, with the rear garden benefitting from a patio area and a large shed

Nestled in the heart of the cosy Whitehaven neighbourhood of Hensingham stands this deceptively spacious semi-detached gem that's sure to steal your heart. With the West Cumberland Hospital just a stone's throw away, this property is a dream come true for healthcare workers looking for the perfect blend of convenient location and tranquil living. Kids in tow? Fear not, as local schools, an inviting children's playpark, and skate park await their adventures just a short stroll from your doorstep. As you approach, the tastefully maintained front garden welcomes you with a burst of colour, courtesy of the blooming plants and shrubs.

Step inside, and your earliest glance at the inviting hallway leads to the sheer spaciousness of the lounge, where sunlight dances through two windows overlooking the front garden. Picture yourself lounging in this inviting space, complete with wood effect flooring setting the tone for cosy nights in. The well-maintained kitchen is a blend of function and charm, seamlessly connected to the rear hall, where you'll find a convenient ground floor WC and a sizeable pantry-style cupboard, perfect for keeping family life organised. Upstairs, the bright hallway unfolds into two bedrooms and a family bathroom, with the master bedroom bathed in natural light from two windows, not to mention the built-in cupboard that's a wardrobe-lover's dream.

Stepping outside, the property reveals its true potential with a good-sized rear garden featuring a relaxing patio area, destined for al fresco dining and summer soirées. A composite shed nestled at the rear of the garden provides ample storage for outdoor essentials, whether you're a first-time buyer embarking on the homeownership journey, a couple seeking a cosy nest to call your own, or an investor eyeing a prime rental opportunity near the bustling hospital, this property ticks all the boxes for a vibrant lifestyle infused with all the comforts of home.



Selling with First Choice Move

First Choice Move began in 2010 from humble beginnings—from a kitchen table in Egremont. Built on family values, hard work, and a passion for property, we have grown to become the largest estate agency in West Cumbria. As a family-run business, we believe in combining traditional estate agency values with the very latest marketing techniques to ensure every property gets maximum exposure. From high-quality photography, 3D tours, drone photography, videos and professional floorplans to online advertising and social media campaigns, we use a tailored approach to attract the right buyers. Our commitment to excellence has earned us multiple national, industry-recognised awards, a testament to our dedication to delivering outstanding service and results. We are more than just an estate agency—we're a trusted partner for buyers and sellers across West Cumbria, combining innovation with personal service to help you move with confidence.

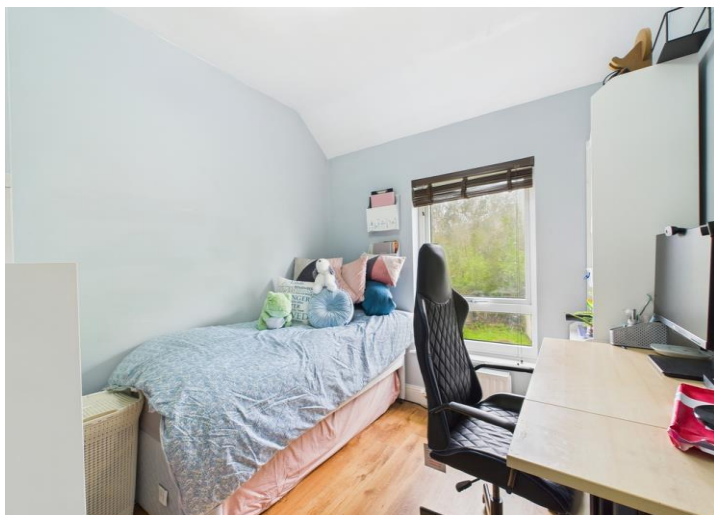
Mortgages

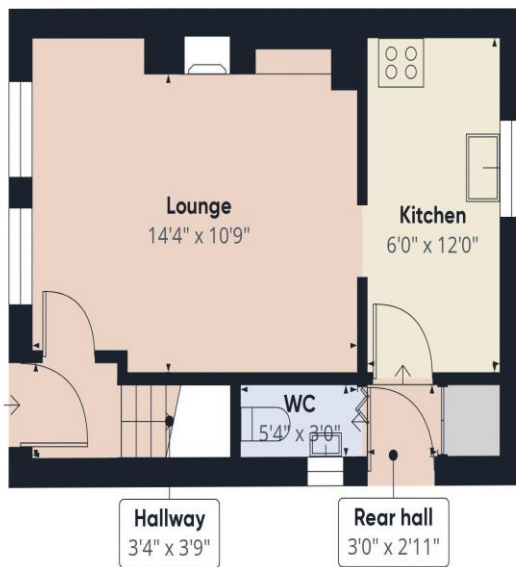
Need help finding the right mortgage for your needs? First Choice Move Mortgage Services are part of the Mortgage Advice Bureau network, one of the UK's largest award-winning mortgage brokers. We can search from a selection of over 90 different lenders with over 12,000 different mortgages, including exclusive deals only available through us, to find the right deal for you. Our advice will be specifically tailored to your needs and circumstances, which could be for a first-time buyer, home-mover, or for re-mortgaging or investing in property. Contact us on 01946 413001 to arrange a free consultation with one of our experienced and dedicated in house mortgage and protection advisers. You may have to pay an early repayment charge to your existing lender if you re-mortgage. There may be a fee for mortgage advice. The actual amount you pay will depend upon your circumstances. The fee is up to 1% but a typical fee is 0.3% of the amount borrowed.

Note

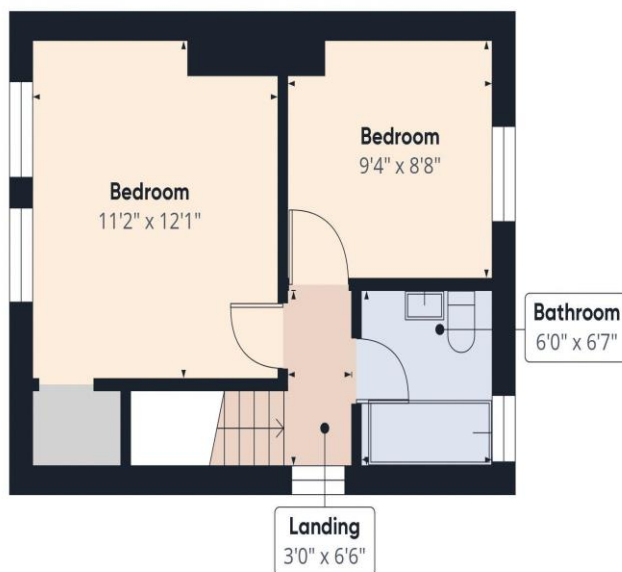
Please note that all measurements have been taken using a laser tape measure which may be subject to a small margin of error. Some photos may have been taken with a wide-angle camera lens. First Choice Move has not tested any apparatus, equipment, fixtures and fittings or services and so cannot verify that they are in working order or fit for the purpose. A buyer is advised to obtain verification from their solicitor or surveyor. References to the tenure of a property are based on information supplied by the Seller. The Agent has not had sight of the title documents.







Ground Floor



Floor 1



Approximate total area[®]
589.11 ft²

(1) Excluding balconies and terraces

While every attempt has been made to ensure accuracy, all measurements are approximate, not to scale. This floor plan is for illustrative purposes only.

Calculations are based on RICS IPMS 3C standard.

GIRAFFE360