



Offered for sale with no forward chain

Recently fitted contemporary modern kitchen

Popular residential area

Close to Whitehaven Hospital

Quiet Cul-de-sac off the main road

Well presented throughout

Spacious open plan lounge diner

Close to local schools and the town centre

Large rear garden

Ideal for first time buyers, couples and families

Offered for sale with no forward chain, this well-presented semi-detached property is nestled in a quiet cul-de-sac, providing a peaceful retreat for its next owners.

Situated in a highly convenient and sought after location, Whitehaven hospital is just a five-minute stroll away, while schools such as Hensingham Jr School are within easy reach, making the daily school run a breeze. For commuters, the nearby A595 is only a 30-second drive away, offering excellent transport links to the surrounding areas, with Whitehaven town centre just a ten-minute drive.

Step inside this lovingly maintained property and be greeted by a space that exudes warmth and comfort. The hall leads to a bright and spacious open plan lounge diner, perfect for unwinding after a long day or entertaining guests. The recently fitted kitchen boasts contemporary units, sleek work surfaces, and modern tiled splashbacks, making cooking a joy.

Upstairs, three well-proportioned bedrooms offer ample space for the whole family, while the modern bathroom features a p-shaped shower bath with a curved glass screen and a sink. An additional separate WC adds convenience to this charming home.

Outside, this property truly shines with its large rear garden, featuring well maintained lawns at the front and back, as well as a side patio area – ideal for enjoying al-fresco dining or relaxing in the sun. A useful shed provides storage solutions for all your outdoor essentials, ensuring a clutter-free space. Don't miss the opportunity to make this property your own and enjoy the comforts of a well-kept home in a sought-after location.



Selling with First Choice Move

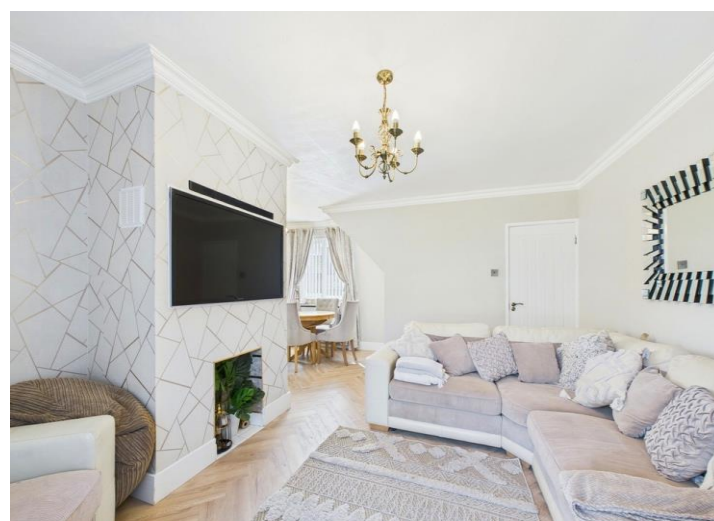
First Choice Move began in 2010 from humble beginnings—from a kitchen table in Egremont. Built on family values, hard work, and a passion for property, we have grown to become the largest estate agency in West Cumbria. As a family-run business, we believe in combining traditional estate agency values with the very latest marketing techniques to ensure every property gets maximum exposure. From high-quality photography, 3D tours, drone photography, videos and professional floorplans to online advertising and social media campaigns, we use a tailored approach to attract the right buyers. Our commitment to excellence has earned us multiple national, industry-recognised awards, a testament to our dedication to delivering outstanding service and results. We are more than just an estate agency—we're a trusted partner for buyers and sellers across West Cumbria, combining innovation with personal service to help you move with confidence.

Mortgages

Need help finding the right mortgage for your needs? First Choice Move Mortgage Services are part of the Mortgage Advice Bureau network, one of the UK's largest award-winning mortgage brokers. We can search from a selection of over 90 different lenders with over 12,000 different mortgages, including exclusive deals only available through us, to find the right deal for you. Our advice will be specifically tailored to your needs and circumstances, which could be for a first-time buyer, home-mover, or for re-mortgaging or investing in property. Contact us on 01946 413001 to arrange a free consultation with one of our experienced and dedicated in house mortgage and protection advisers. You may have to pay an early repayment charge to your existing lender if you re-mortgage. There may be a fee for mortgage advice. The actual amount you pay will depend upon your circumstances. The fee is up to 1% but a typical fee is 0.3% of the amount borrowed.

Note

Please note that all measurements have been taken using a laser tape measure which may be subject to a small margin of error. Some photos may have been taken with a wide-angle camera lens. First Choice Move has not tested any apparatus, equipment, fixtures and fittings or services and so cannot verify that they are in working order or fit for the purpose. A buyer is advised to obtain verification from their solicitor or surveyor. References to the tenure of a property are based on information supplied by the Seller. The Agent has not had sight of the title documents.









Ground Floor



Floor 1



Approximate total area[®]
725.92 ft²

Reduced headroom
1.27 ft²

(1) Excluding balconies and terraces

Reduced headroom
..... Below 5 ft

While every attempt has been made to ensure accuracy, all measurements are approximate, not to scale. This floor plan is for illustrative purposes only.

Calculations are based on RICS IPMS 3C standard.

GIRAFFE360