



Located in a highly sought after area of Egremont

Large open plan lounge and diner with double doors opening to an extension

Boasts a generously sized and well maintained kitchen

Features an eye catching bathroom suite

Delightful garden to both the front and rear

Larger than an average three bedroom semi detached home

The extension offers versatility, currently used as a play room and utility

Three spacious bedrooms, two with fitted wardrobes

Driveway provides plenty of parking

Gentle stroll to Egremont town centre

Welcome to this charming 3-bedroom semi-detached house in the highly sought-after area of Egremont, nestled in a peaceful cul-de-sac where properties tend to fly off the market faster than you can say "home sweet home". Entering the property, you're greeted by an inviting and surprisingly spacious hallway that sets the tone for what's to come. The large open plan lounge and diner area is perfect for entertaining, with double doors leading to a fantastic extension that currently serves as a playroom on one side and a useful utility space on the other – talk about versatility! Whipping up your favourite meals will be a breeze in the generously sized and impeccably maintained kitchen, which is just waiting for someone to bring it to life with the delicious smells of home-cooked goodness.

Upstairs, you'll find three bright and airy bedrooms, each offering its own unique charm. The master bedroom boasts fitted wardrobes and overbed cabinets, providing plenty of storage without compromising on style. Meanwhile, the third bedroom comes equipped with a built-in wardrobe, ensuring there's ample space for all your belongings.

The eye-catching bathroom suite is a real showstopper, offering a relaxing retreat where you can unwind after a long day and wash away your cares in style.

Outside, the property continues to impress with a driveway that provides ample parking space and leads to a detached garage, perfect for storing all your essentials. The delightful gardens to both the front and rear of the property are a gardener's dream, featuring a variety of beautiful plants and shrubs that add a splash of colour without requiring too much maintenance – the best of both worlds!

When you're ready to explore the local area, a short stroll will take you to Egremont centre, where you'll find a wide range of shops, cafes, and other amenities just waiting to be discovered. And if you're in the mood for a bit of history, the castle is just a stone's throw away, offering a fascinating glimpse into the past. For families, local schools are within easy reach, making the daily school run a breeze. With so much to offer both inside and out, this property is just waiting for you to make it your own and start creating memories that will last a lifetime. So why wait? Come and see for yourself what makes this house a true gem in the heart of Egremont.



Selling with First Choice Move

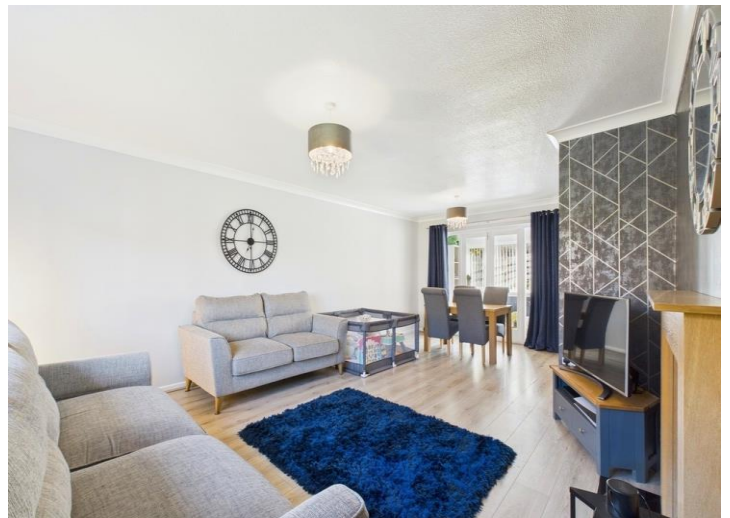
First Choice Move began in 2010 from humble beginnings—from a kitchen table in Egremont. Built on family values, hard work, and a passion for property, we have grown to become the largest estate agency in West Cumbria. As a family-run business, we believe in combining traditional estate agency values with the very latest marketing techniques to ensure every property gets maximum exposure. From high-quality photography, 3D tours, drone photography, videos and professional floorplans to online advertising and social media campaigns, we use a tailored approach to attract the right buyers. Our commitment to excellence has earned us multiple national, industry-recognised awards, a testament to our dedication to delivering outstanding service and results. We are more than just an estate agency—we're a trusted partner for buyers and sellers across West Cumbria, combining innovation with personal service to help you move with confidence.

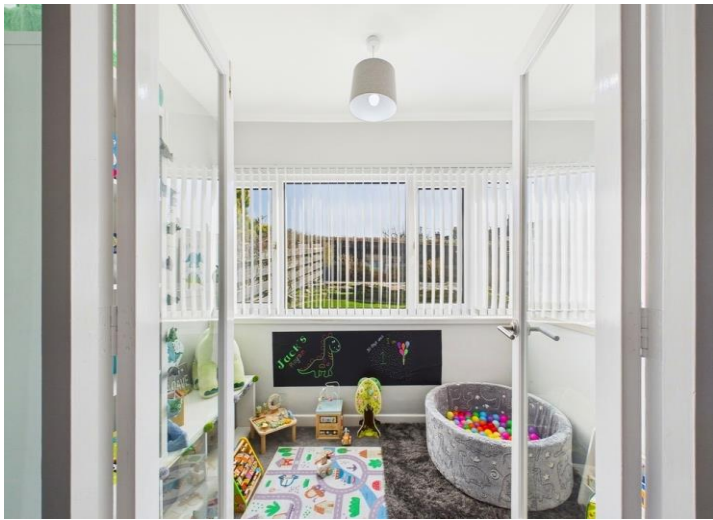
Mortgages

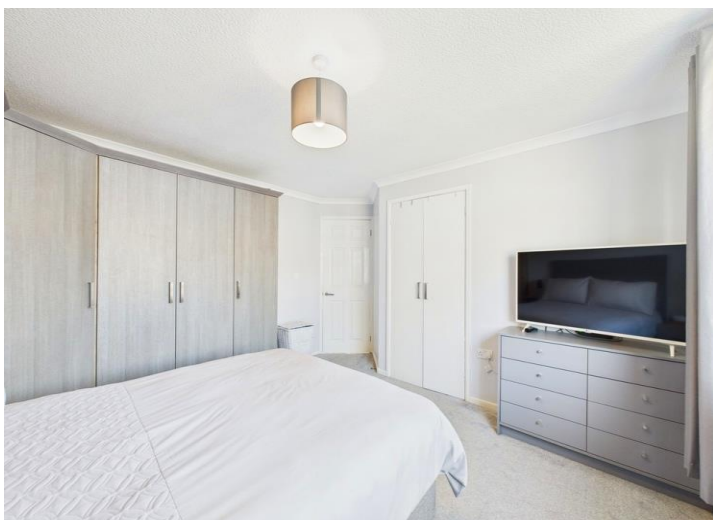
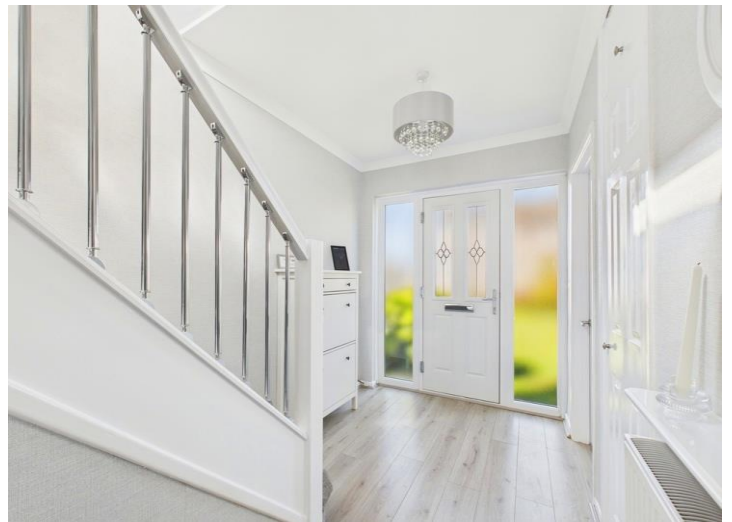
Need help finding the right mortgage for your needs? First Choice Move Mortgage Services are part of the Mortgage Advice Bureau network, one of the UK's largest award-winning mortgage brokers. We can search from a selection of over 90 different lenders with over 12,000 different mortgages, including exclusive deals only available through us, to find the right deal for you. Our advice will be specifically tailored to your needs and circumstances, which could be for a first-time buyer, home-mover, or for re-mortgaging or investing in property. Contact us on 01946 413001 to arrange a free consultation with one of our experienced and dedicated in house mortgage and protection advisers. You may have to pay an early repayment charge to your existing lender if you re-mortgage. There may be a fee for mortgage advice. The actual amount you pay will depend upon your circumstances. The fee is up to 1% but a typical fee is 0.3% of the amount borrowed.

Note

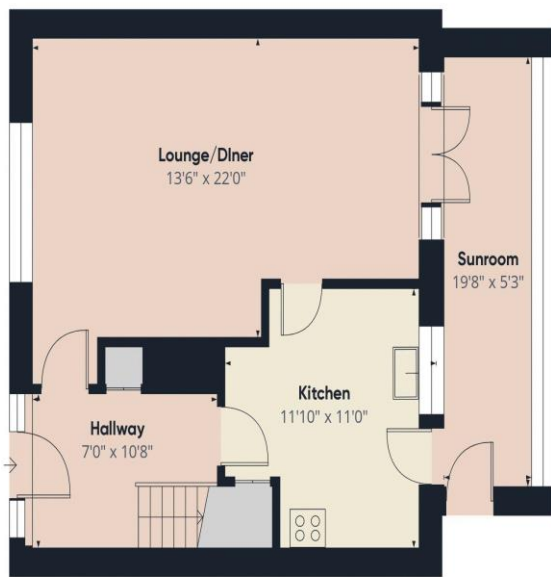
Please note that all measurements have been taken using a laser tape measure which may be subject to a small margin of error. Some photos may have been taken with a wide-angle camera lens. First Choice Move has not tested any apparatus, equipment, fixtures and fittings or services and so cannot verify that they are in working order or fit for the purpose. A buyer is advised to obtain verification from their solicitor or surveyor. References to the tenure of a property are based on information supplied by the Seller. The Agent has not had sight of the title documents.



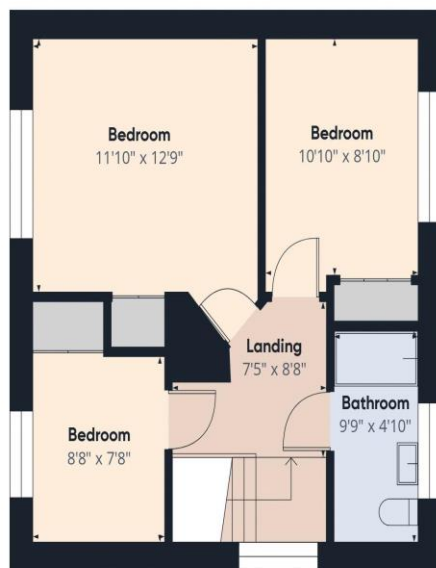








Ground Floor



Floor 1



Approximate total area⁽¹⁾
1059.39 ft²

(1) Excluding balconies and terraces

While every attempt has been made to ensure accuracy, all measurements are approximate, not to scale. This floor plan is for illustrative purposes only.

Calculations are based on RICS IPMS 3C standard.

GIRAFFE360