



Two good sized bedrooms including a large master bedroom

Highly sought after area of Whitehaven

Spacious open plan kitchen and diner

Benefits from a first floor bathroom

Boasts a garage for parking or storage

Perfect for first time buyers, couple and those downsizing

Light and airy lounge

Garden both front and rear

Ideal to add value and your own style

Close to schools and town centre within easy reach
Ideal to add value and your own style

Welcome to this charming 2-bedroom mid-terraced house nestled in the highly sought-after area of Whitehaven. Perfect for first-time buyers, couples, and those looking to downsize, this property offers a fantastic opportunity to make it your own with some light modernisation - a chance to add value and infuse your personal style.

Step inside and be greeted by a light and airy lounge, perfect for relaxing after a long day. The spacious open plan kitchen and diner provide a great space for cooking up a storm or entertaining friends and family. Whether it's a quiet night in or a lively dinner party, this area will cater to all your needs.

Upstairs, you'll find two good-sized bedrooms, including a large master bedroom that offers plenty of space to unwind and relax. The first-floor bathroom is conveniently located, adding to the functionality of the property.

Outside, the property boasts a garden at both the front and rear, offering potential for green-fingered enthusiasts to create their own outdoor oasis. There is also the added benefit of potential to add a drive to the front of the property, providing convenient off-street parking. Additionally, a garage is included, providing parking space for your vehicle or ample storage for all your belongings.

For families, the property is ideally located close to schools, with Jericho Primary School just a two-minute walk away, making school runs a breeze. Whitehaven town centre is a mere 10-minute drive away, offering a range of shops, restaurants, and amenities for your convenience.

Experience the best of both worlds with this property - a peaceful retreat in a sought-after area while still being within easy reach of all the amenities and attractions Whitehaven has to offer. Don't miss out on this opportunity to own a property with great potential and put your personal stamp on it.

Act fast and make this property your own - schedule a viewing today and envision the endless possibilities that await you in this lovely home in Whitehaven.



Selling with First Choice Move

First Choice Move began in 2010 from humble beginnings—from a kitchen table in Egremont. Built on family values, hard work, and a passion for property, we have grown to become the largest estate agency in West Cumbria. As a family-run business, we believe in combining traditional estate agency values with the very latest marketing techniques to ensure every property gets maximum exposure. From high-quality photography, 3D tours, drone photography, videos and professional floorplans to online advertising and social media campaigns, we use a tailored approach to attract the right buyers. Our commitment to excellence has earned us multiple national, industry-recognised awards, a testament to our dedication to delivering outstanding service and results. We are more than just an estate agency—we're a trusted partner for buyers and sellers across West Cumbria, combining innovation with personal service to help you move with confidence.

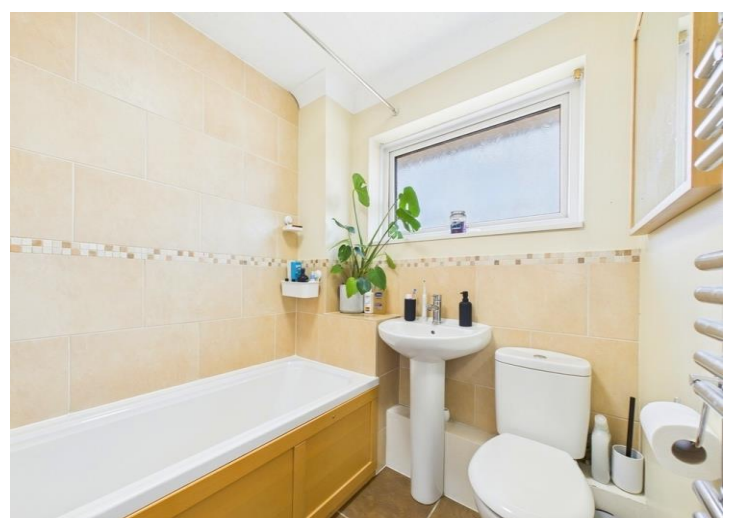
MORTGAGES

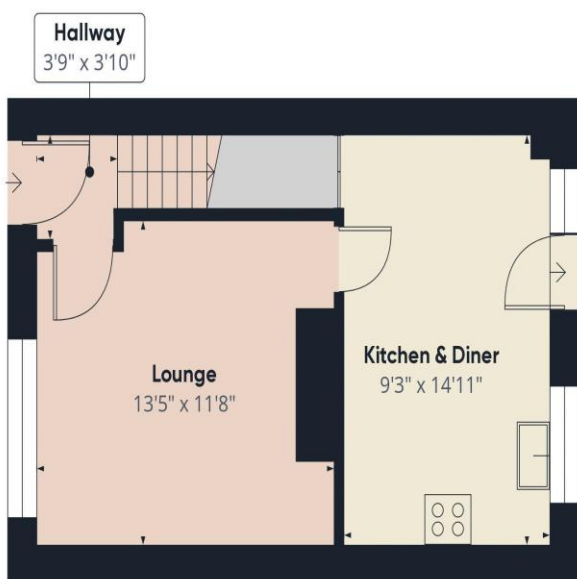
Need help finding the right mortgage for your needs? First Choice Move Mortgage Services are part of the Mortgage Advice Bureau network, one of the UK's largest award-winning mortgage brokers. We can search from a selection of over 90 different lenders with over 12,000 different mortgages, including exclusive deals only available through us, to find the right deal for you. Our advice will be specifically tailored to your needs and circumstances, which could be for a first-time buyer, home-mover, or for remortgaging or investing in property. Contact us on 01946 413001 to arrange a free consultation with one of our experienced and dedicated in house mortgage and protection advisers. You may have to pay an early repayment charge to your existing lender if you re-mortgage. There may be a fee for mortgage advice. The actual amount you pay will depend upon your circumstances. The fee is up to 1% but a typical fee is 0.3% of the amount borrowed.

NOTE

Please note that all measurements have been taken using a laser tape measure which may be subject to a small margin of error. Some photos may have been taken with a wide-angle camera lens. First Choice Move has not tested any apparatus, equipment, fixtures and fittings or services and so cannot verify that they are in working order or fit for the purpose. A buyer is advised to obtain verification from their solicitor or surveyor. References to the tenure of a property are based on information supplied by the Seller. The Agent has not had sight of the title documents.







Ground Floor



Floor 1



Approximate total area⁽¹⁾
637.87 ft²

(1) Excluding balconies and terraces

While every attempt has been made to ensure accuracy, all measurements are approximate, not to scale. This floor plan is for illustrative purposes only.

Calculations are based on RICS IPMS 3C standard.

GIRAFFE 360