



The property is offered for sale with no forward chain

Just a stones throw from the beautiful harbour

Light and airy lounge with separate dining room

Three good sized and well maintained bedrooms

Low maintenance garden to the rear with patio area

Stunning sea views to be enjoyed from the front windows

Deceptively spacious, set over four floors

The kitchen is well maintained with integrated appliances

Spacious family bathroom with corner bath

Within easy walking distance of popular primary schools

Welcome to this charming property, where stunning sea views and coastal living await you! Situated just a stone's throw away from the beautiful harbour, this home is offered for sale with no forward chain, making it the perfect opportunity for those looking to settle into a new home hassle-free.

Spread over four floors, this deceptively spacious property boasts two versatile basement rooms that can serve as ideal storage spaces or home offices - the choice is yours! As you step inside, you'll be greeted by a light and airy lounge that seamlessly flows into a separate dining room, providing the perfect setting for entertaining guests or relaxing after a long day.

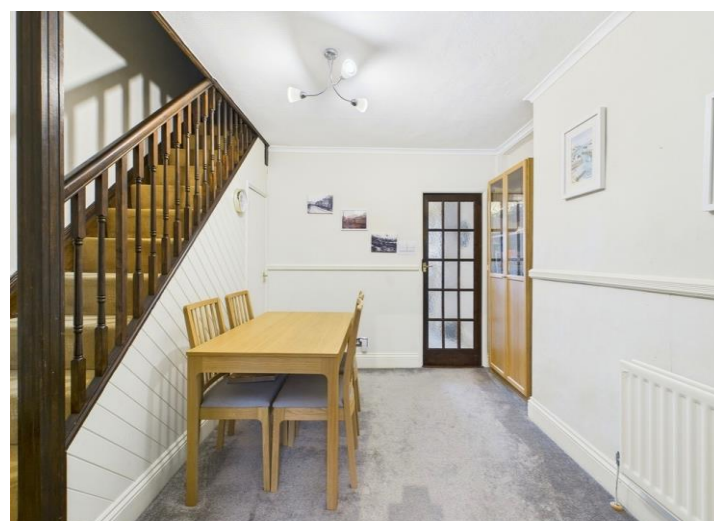
The kitchen is well maintained and comes complete with integrated appliances, making meal preparation a breeze. Upstairs, you'll find three good-sized bedrooms that exude charm, with exposed beams and skylight windows offering a glimpse of the starlit skies above and the mesmerising sea views ahead.

The spacious family bathroom features a charming corner bath, ideal for unwinding and soaking away the day's stresses. To add to its allure, the property extends its charm beyond the interior, with a rear garden designed for minimal upkeep. Featuring a patio area for alfresco dining and a well-maintained lawn surrounded by mature trees and shrubs, this outdoor space is the perfect spot for enjoying the fresh coastal air.

Conveniently situated within a stone's throw of local amenities, including a post office, convenience store, and butchers, this property offers the ideal blend of tranquillity and convenience. For families, Beckstone Primary School is just a short stroll away, ensuring that little ones have easy access to quality education.

Located a mere 10-minute drive from the bustling towns of Whitehaven and Workington, this home offers the best of both worlds - a peaceful coastal setting with easy access to urban conveniences. Whether you're looking for a permanent residence, a holiday home, or an investment opportunity, this property ticks all the boxes.

Don't miss out on the chance to make this delightful property your own and wake up to the sound of seagulls and the smell of the sea breeze every day. Schedule a viewing today and start envisioning a life filled with coastal charm and stunning sea views right at your doorstep!



Selling with First Choice Move

First Choice Move began in 2010 from humble beginnings—from a kitchen table in Egremont. Built on family values, hard work, and a passion for property, we have grown to become the largest estate agency in West Cumbria. As a family-run business, we believe in combining traditional estate agency values with the very latest marketing techniques to ensure every property gets maximum exposure. From high-quality photography, 3D tours, drone photography, videos and professional floorplans to online advertising and social media campaigns, we use a tailored approach to attract the right buyers. Our commitment to excellence has earned us multiple national, industry-recognised awards, a testament to our dedication to delivering outstanding service and results. We are more than just an estate agency—we're a trusted partner for buyers and sellers across West Cumbria, combining innovation with personal service to help you move with confidence.

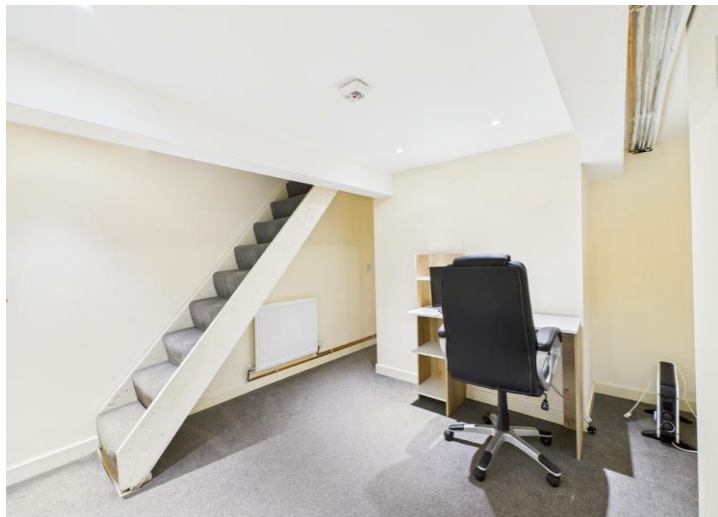
Mortgages

Need help finding the right mortgage for your needs? First Choice Move Mortgage Services are part of the Mortgage Advice Bureau network, one of the UK's largest award-winning mortgage brokers. We can search from a selection of over 90 different lenders with over 12,000 different mortgages, including exclusive deals only available through us, to find the right deal for you. Our advice will be specifically tailored to your needs and circumstances, which could be for a first-time buyer, home-mover, or for re-mortgaging or investing in property. Contact us on 01946 413001 to arrange a free consultation with one of our experienced and dedicated in house mortgage and protection advisers. You may have to pay an early repayment charge to your existing lender if you re-mortgage. There may be a fee for mortgage advice. The actual amount you pay will depend upon your circumstances. The fee is up to 1% but a typical fee is 0.3% of the amount borrowed.

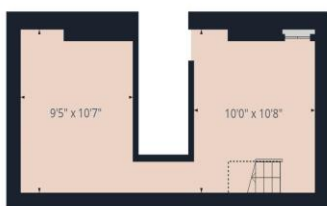
Note

Please note that all measurements have been taken using a laser tape measure which may be subject to a small margin of error. Some photos may have been taken with a wide-angle camera lens. First Choice Move has not tested any apparatus, equipment, fixtures and fittings or services and so cannot verify that they are in working order or fit for the purpose. A buyer is advised to obtain verification from their solicitor or surveyor. References to the tenure of a property are based on information supplied by the Seller. The Agent has not had sight of the title documents.









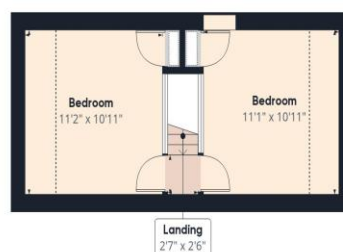
Floor -1



Ground Floor



Floor 1



Floor 2



Approximate total area⁽¹⁾

915.36 ft²

Reduced headroom

61.18 ft²

(1) Excluding balconies and terraces

Reduced headroom

..... Below 5 ft

While every attempt has been made to ensure accuracy, all measurements are approximate, not to scale. This floor plan is for illustrative purposes only.

Calculations are based on RICS IPMS 3C standard.

GIRAFFE360