



A perfect home for a first time buyer, couple or with three bedrooms a family

Good sized, well maintained kitchen with integrated appliances

Three well presented bedrooms, two with sea views

For sale with no forward chain

Numerous schools are within easy reach

Spacious lounge with ceiling spotlights

Well maintained bathroom

Good sized yard to the rear with brick built shed

Offers good value for money

Located in a popular area of Whitehaven, five minutes to the town centre

Welcome to your future home on the outskirts of Whitehaven. This charming property is perfect for first-time buyers, a couple looking to settle down, or a growing family seeking a cosy space to call their own. With three bedrooms, this home offers plenty of flexibility for your needs.

Step into the spacious lounge and be greeted by the warm glow of ceiling spotlights, creating a cosy atmosphere for relaxation or entertaining guests. The room is also equipped with connections for a wall-mounted TV, perfect for movie nights or binge-watching your favourite shows.

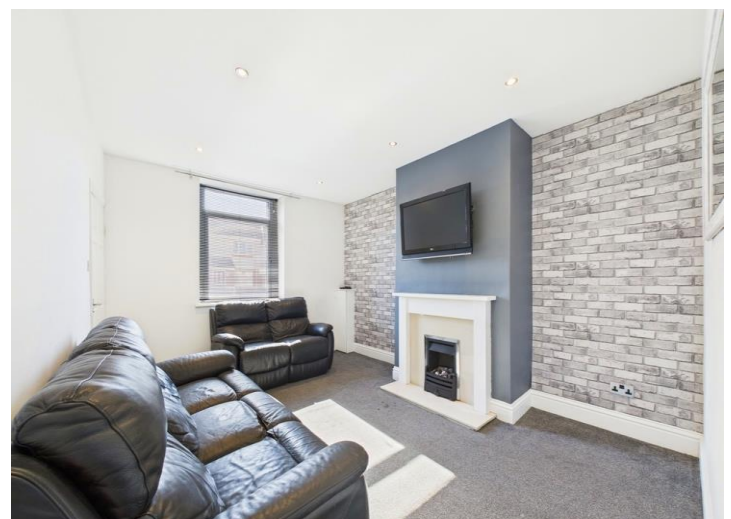
The well-maintained kitchen has plenty of space and integrated appliances to whip up delicious meals for your loved ones. Imagine cooking up a storm while enjoying the company of family and friends in this inviting space. The bathroom is also well-kept, offering a pleasant retreat for a relaxing soak after a long day.

Upstairs, you'll find three well-presented bedrooms, two of which offer sea views that will take your breath away. The third bedroom is a versatile space that could serve as a home office, a dressing room, or a walk-in wardrobe, catering to your individual lifestyle needs.

Outside, the property boasts a good-sized yard to the rear, providing ample space to enjoy the outdoors and soak up some sunshine. A brick-built shed offers additional storage space, just waiting for a fresh coat of paint to bring it back to life.

This property is offered for sale with no forward chain, making the buying process smooth and hassle-free. Located in a popular area of Whitehaven town centre, you'll have easy access to a range of shops, amenities, and the picturesque harbour, perfect for leisurely strolls or enjoying the local scenery.

Families will appreciate the proximity to Kells Infant School and St Mary's Catholic Primary School, just a few minutes' walk away, ensuring convenience for parents and children alike. Don't miss your chance to make this wonderful property your own and create lasting memories in a place you can truly call home. Contact us today to arrange a viewing and take the first step towards your new beginning in Whitehaven!



SELLING WITH FIRST CHOICE MOVE

First Choice Move began in 2010 from humble beginnings—from a kitchen table in Egremont. Built on family values, hard work, and a passion for property, we have grown to become the largest estate agency in West Cumbria. As a family-run business, we believe in combining traditional estate agency values with the very latest marketing techniques to ensure every property gets maximum exposure. From high-quality photography, 3D tours, drone photography, videos and professional floorplans to online advertising and social media campaigns, we use a tailored approach to attract the right buyers. Our commitment to excellence has earned us multiple national, industry-recognised awards, a testament to our dedication to delivering outstanding service and results. We are more than just an estate agency—we're a trusted partner for buyers and sellers across West Cumbria, combining innovation with personal service to help you move with confidence.

MORTGAGES

Need help finding the right mortgage for your needs? First Choice Move Mortgage Services are part of the Mortgage Advice Bureau network, one of the UK's largest award-winning mortgage brokers. We can search from a selection of over 90 different lenders with over 12,000 different mortgages, including exclusive deals only available through us, to find the right deal for you. Our advice will be specifically tailored to your needs and circumstances, which could be for a first-time buyer, home-mover, or for remortgaging or investing in property. Contact us on 01946 413001 to arrange a free consultation with one of our experienced and dedicated in house mortgage and protection advisers. You may have to pay an early repayment charge to your existing lender if you re-mortgage. There may be a fee for mortgage advice. The actual amount you pay will depend upon your circumstances. The fee is up to 1% but a typical fee is 0.3% of the amount borrowed.

NOTE

Please note that all measurements have been taken using a laser tape measure which may be subject to a small margin of error. Some photos may have been taken with a wide-angle camera lens. First Choice Move has not tested any apparatus, equipment, fixtures and fittings or services and so cannot verify that they are in working order or fit for the purpose. A buyer is advised to obtain verification from their solicitor or surveyor. References to the tenure of a property are based on information supplied by the Seller. The Agent has not had sight of the title documents.





<div data-bbox="357 85 1010 651"><p data-bbox="639 680 724 698">Ground Floor</p></div>	<div data-bbox="1374 114 1458 219"></div> <div data-bbox="1335 506 1497 629"><p>Approximate total area^m 617.22 ft²</p><p>Reduced headroom 0.16 ft²</p></div> <div data-bbox="1331 927 1501 945"><p>(1) Excluding balconies and terraces</p></div> <div data-bbox="1369 1001 1463 1046"><p>Reduced headroom Below 5 ft</p></div> <div data-bbox="1326 1102 1509 1281"><p>While every attempt has been made to ensure accuracy, all measurements are approximate, not to scale. This floor plan is for illustrative purposes only.</p><p>Calculations were based on RICS IPMS 3C standard. Please note that calculations were adjusted by a third party and therefore may not comply with RICS IPMS 3C.</p></div> <div data-bbox="1383 1301 1449 1317"><p>GIRAFFE360</p></div>
<div data-bbox="445 817 924 1232"><p data-bbox="660 1323 703 1341">Floor 1</p></div>	