



**Substantial farmhouse, set on the outskirts of Workington**

**Four spacious double bedrooms with lovely countryside views**

**Large, dual aspect lounge plus dining room and sunroom**

**Property feels semi-rural with the benefits of being close to the town centre**

**Set on three acres of land, with several outbuildings**

**The grounds feature stables, perfect for horse lovers**

**A total of three first floor bathrooms plus two ground floor WC's**

**Property has its own private lane and plenty of parking**



Discover your dream countryside retreat with all the benefits of being close to the town centre. This expansive farmhouse is nestled on the outskirts of Workington and boasts four spacious bedrooms with plenty of natural light and four bathrooms, providing ample space for family and guests. With three inviting reception rooms, there's plenty of room to relax and entertain.

The property benefits from a large front porch and a hallway to rival most living spaces. This substantial farmhouse offers a tremendous amount of space inside and out, with a wealth of charm and original features.

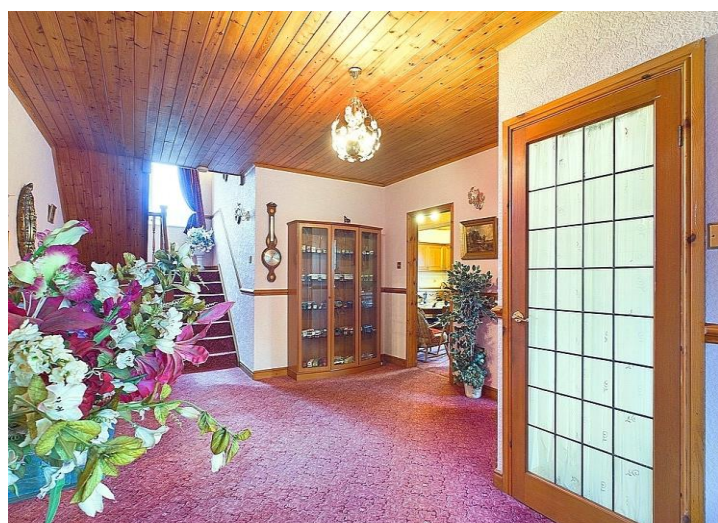
The property is set on a generous three acres of land, and is perfect for nature lovers and equestrian enthusiasts alike. Perfectly suited for horse lovers the grounds feature stables and several outbuildings, for storage or additional uses. The expansive grounds provide ample space for riding, training or grazing, making it an ideal setting for equestrian activities. This fantastic property offers endless possibilities for outdoor activities or hobby farming.

While the property does require some work, it presents a fantastic opportunity for those looking to put their personal touch on a fantastic, substantial home. Whether you're an outdoor adventurer or a horse lover, this farmhouse is the perfect canvas for your country lifestyle.

Don't miss out on this unique opportunity to create your own haven in the heart of nature, with the convenience of the town, being just a stone's throw away. Contact us today for more information or to schedule a viewing.



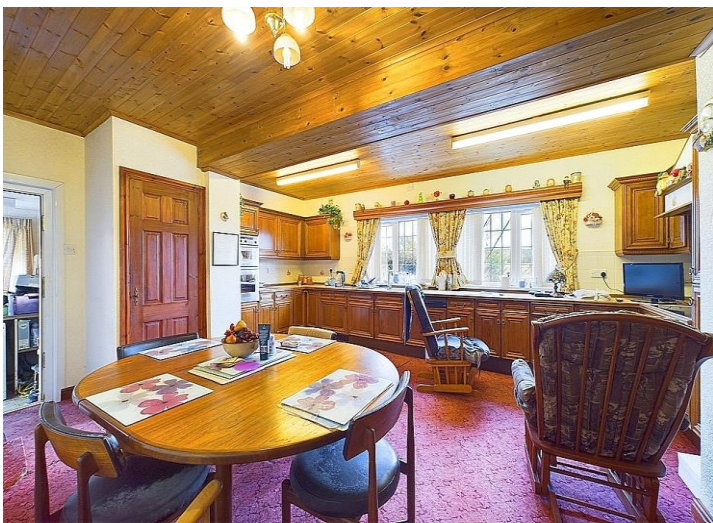












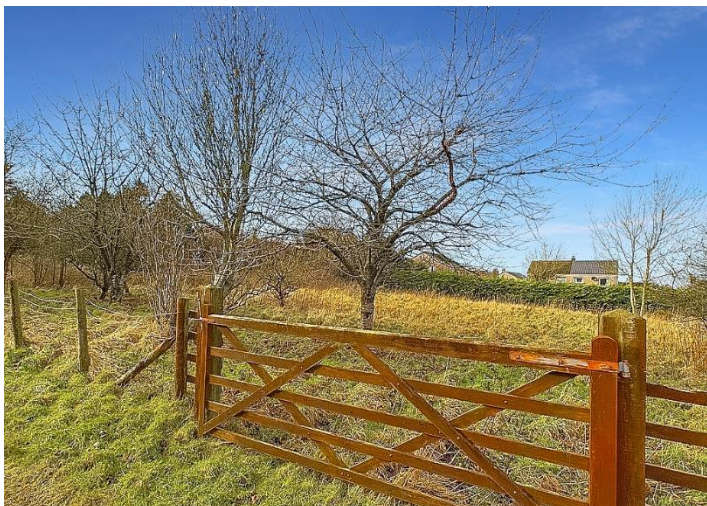
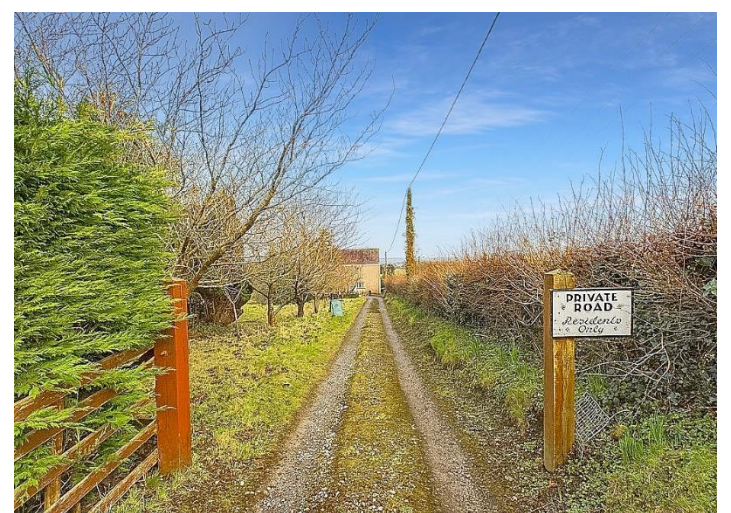


















 <p><b>Ground Floor Building 1</b></p>	 <p><b>Floor 1 Building 1</b></p>	<div data-bbox="1380 123 1476 235"> </div> <div data-bbox="1340 515 1516 649"> <p><b>Approximate total area<sup>®</sup></b> 3247.22 ft<sup>2</sup></p> <p><b>Reduced headroom</b> 4.21 ft<sup>2</sup></p> </div> <div data-bbox="1332 929 1524 974"> <p>(1) Excluding balconies and terraces</p> </div> <div data-bbox="1372 1008 1484 1064"> <p>Reduced headroom ..... Below 5 ft.</p> </div> <div data-bbox="1332 1108 1524 1198"> <p>While every attempt has been made to ensure accuracy, all measurements are approximate, not to scale. This floor plan is for illustrative purposes only.</p> </div> <div data-bbox="1332 1198 1524 1310"> <p>Calculations were based on RICS IPMS 3C standard. Please note that calculations were adjusted by a third party and therefore may not comply with RICS IPMS 3C.</p> </div> <div data-bbox="1388 1310 1468 1344"> <p><b>GIRAFFE360</b></p> </div>
 <p><b>Ground Floor Building 2</b></p>		