



Beautifully presented, extended semi-detached property

The property has benefited from an extension to the rear

The property has three bedrooms, with the master benefiting from fitted wardrobes

Ideal home for first time buyers, couples or a growing family

Located on the outskirts of the town centre

Spacious dual aspect lounge diner with bay window to the front

Well maintained kitchen with integrated appliances

Family bathroom conveniently located on the first floor

lovely front and rear gardens with decking to the rear

Easy walking distance to numerous schools

This beautifully presented, three-bedroom semi-detached house in Workington is an absolute gem. Situated just on the outskirts of the town centre, convenience is the name of the game here. You can stroll into town within minutes, where a plethora of amenities awaits you.

Local schools are within easy reach, perfect for families with children, and a handy convenience store and takeaway joints are just a hop, skip, and a jump away for those nights when cooking feels like a chore.

Step inside, and you're greeted by a spacious and tastefully decorated hallway with wood-effect flooring that sets the tone for the rest of the home. The large open-plan lounge and diner are flooded with natural light thanks to dual aspect windows, and a modern fireplace adds a touch of elegance to the space.

The extension to the property has created a generous kitchen and diner area, complete with integrated appliances and ample room for mealtime gatherings. Upstairs, three cosy bedrooms await, with the master boasting fitted wardrobes and the second bedroom benefits from a large, wardrobe with hanging rails and shelves.

The family bathroom is conveniently located, and additional storage can be found in the fully boarded loft. Tilt and turn windows make cleaning a breeze, so you can spend less time on chores and more time enjoying your new home.

Outside, the property continues to impress. The low-maintenance front garden welcomes you in, while the rear garden is a true oasis. A patio area leads out from the kitchen, perfect for al fresco dining, and steps up to a lush lawn surrounded by colourful plants and shrubs. A decking area at the rear ensures you have a spot to soak up the sun throughout the day. A bespoke wooden shed and gated access add practicality to this outdoor space, making it both beautiful and functional.

This delightful home truly offers the best of both worlds—a peaceful retreat with easy access to all the amenities you could need.



Selling with First Choice Move

First Choice Move began in 2010 from humble beginnings—from a kitchen table in Egremont. Built on family values, hard work, and a passion for property, we have grown to become the largest estate agency in West Cumbria. As a family-run business, we believe in combining traditional estate agency values with the very latest marketing techniques to ensure every property gets maximum exposure. From high-quality photography, 3D tours, drone photography, videos and professional floorplans to online advertising and social media campaigns, we use a tailored approach to attract the right buyers. Our commitment to excellence has earned us multiple national, industry-recognised awards, a testament to our dedication to delivering outstanding service and results. We are more than just an estate agency—we're a trusted partner for buyers and sellers across West Cumbria, combining innovation with personal service to help you move with confidence.



Mortgages

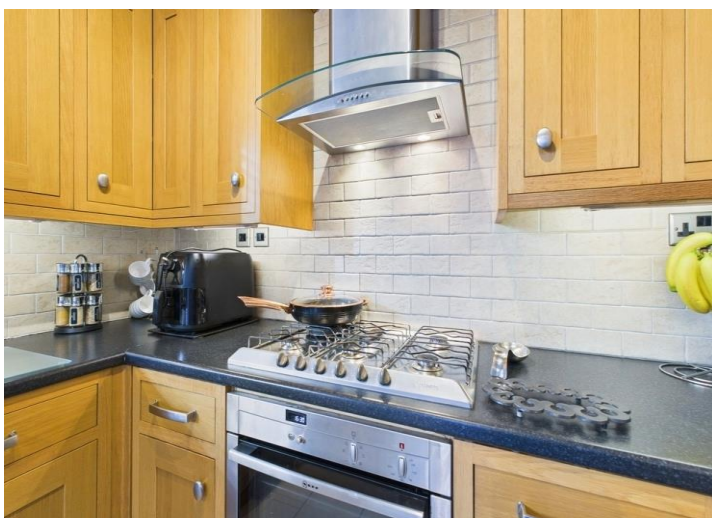
Need help finding the right mortgage for your needs? First Choice Move Mortgage Services are part of the Mortgage Advice Bureau network, one of the UK's largest award-winning mortgage brokers. We can search from a selection of over 90 different lenders with over 12,000 different mortgages, including exclusive deals only available through us, to find the right deal for you. Our advice will be specifically tailored to your needs and circumstances, which could be for a first-time buyer, home-mover, or for re-mortgaging or investing in property. Contact us on 01946 413001 to arrange a free consultation with one of our experienced and dedicated in house mortgage and protection advisers. You may have to pay an early repayment charge to your existing lender if you re-mortgage. There may be a fee for mortgage advice. The actual amount you pay will depend upon your circumstances. The fee is up to 1% but a typical fee is 0.3% of the amount borrowed.



Note

Please note that all measurements have been taken using a laser tape measure which may be subject to a small margin of error. Some photos may have been taken with a wide-angle camera lens. First Choice Move has not tested any apparatus, equipment, fixtures and fittings or services and so cannot verify that they are in working order or fit for the purpose. A buyer is advised to obtain verification from their solicitor or surveyor. References to the tenure of a property are based on information supplied by the Seller. The Agent has not had sight of the title documents.





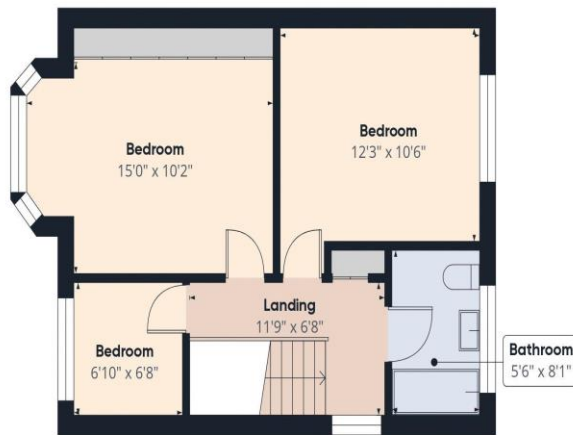






Ground Floor

Approximate total area⁽¹⁾
1063.9 ft²



Floor 1

(1) Excluding balconies and terraces

While every attempt has been made to ensure accuracy, all measurements are approximate, not to scale. This floor plan is for illustrative purposes only.

Calculations were based on RICS IPMS 3C standard. Please note that calculations were adjusted by a third party and therefore may not comply with RICS IPMS 3C.

GIRAFFE360