

A two-story stone house with a dark brown door and a green bin. The house has a stone facade, a dark brown door with a small window, and a green bin with the number 14. There are two windows on the upper floor and a small porch over the door. A large green bush is in the front garden.

richard
james

15 Clocktower Court

Faringdon, SN7 7JX

Asking Price
£230,000



Clocktower Court

Faringdon, SN7 72jx

Freehold | EPC Rating - D

 #  #  #

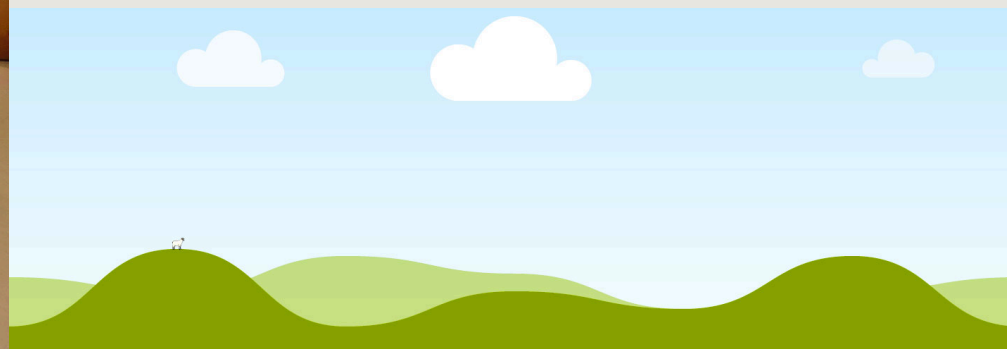
A Modern Two Bedroom Home in the Popular Market Town of Faringdon – Ideal Investment or First-Time Buy

Offered to the market is this well-presented two-bedroom home, situated in the desirable and historic town of Faringdon. Perfectly positioned between Oxford and Swindon, Faringdon boasts a charming mix of period architecture, excellent local amenities, and a strong sense of community, all set amidst the rolling countryside of the Vale of White Horse.

The property itself comprises a modern fitted kitchen, a spacious lounge/diner, two well-proportioned bedrooms, and a contemporary family bathroom. To the rear, you'll find a private garden, predominantly laid to lawn, with gated access to the allocated parking area.



Scan here



Rear
Garden





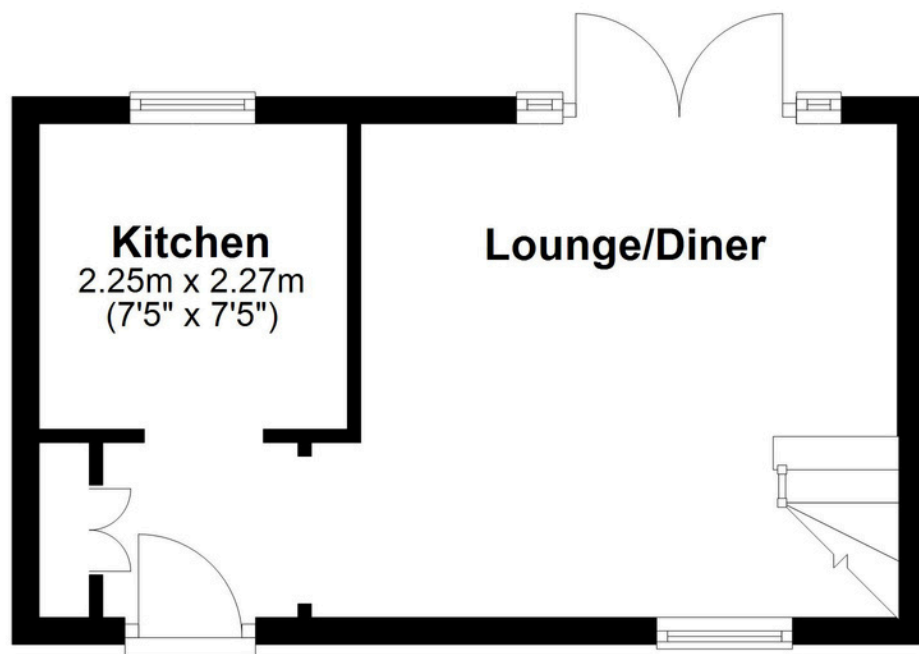
Currently tenanted with a long-term occupant in situ, this home presents a superb opportunity for investors seeking immediate rental income. It would equally suit first-time buyers looking to step onto the property ladder in a thriving and well-connected town.

Early viewing is highly recommended.

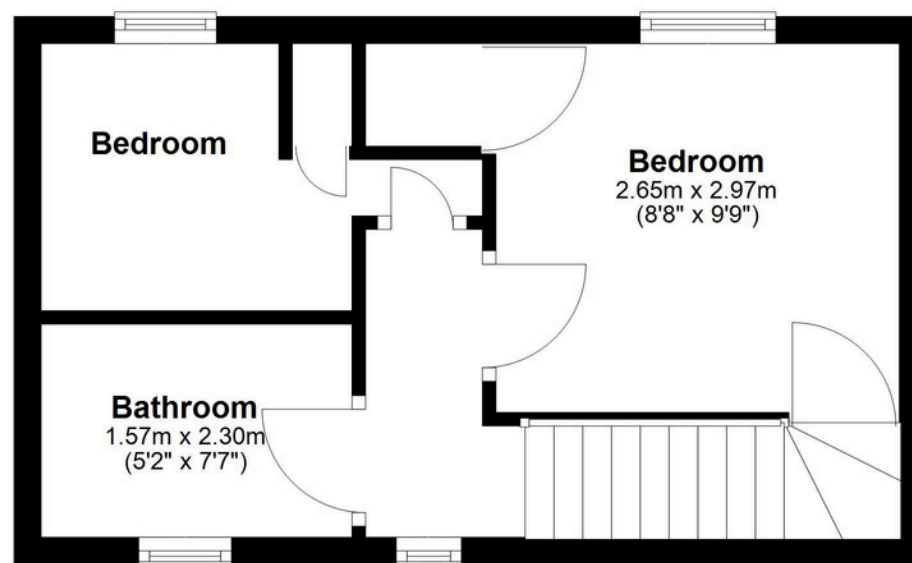
Rear View



Ground Floor



First Floor



01793 765 292

highworth@richardjames.uk

1 Swindon Road | Highworth | SN6 7AH

richardjames.uk

   @rjestateagent