



richard
james

Ceres Road

Blunsdon, Swindon, Wiltshire, SN26 8AF

Guide Price
£400,000



Ceres Road | Blunsdon

FREEHOLD

Council Tax Band - D | EPC Rating - B

 3  2  2

Occupying a pleasant corner plot within the popular 'Hillside' development in Blunsdon Village, this beautifully presented, three-bedroom detached home offers spacious living accommodation, a larger-than-average garden, and a superb position within the development.

Built by Hills Homes in 2019 and extended shortly thereafter with a stunning conservatory, this property provides both style and practicality for modern family living.

The accommodation is arranged over two floors and includes a bright and airy kitchen/breakfast room, a generous living room opening into the conservatory — perfect for relaxing and entertaining — and a convenient downstairs cloakroom. Upstairs, there are three well-proportioned bedrooms, including a principal bedroom with ensuite, and a family bathroom.

Externally, the property enjoys a larger than average rear garden, a front lawn, and driveway parking leading to a spacious single garage featuring both an up-and-over garage door and a personal door for added convenience.

Charlie Berry
Branch Manager

01793 311 043
07470 489 292

charlieberry@richardjames.uk



Scan here

PROPERTY
HIGHLIGHT
HERE



richard
james
*Virtual
Stager*



Situated within the award-winning 'Hillside' development, which won "Best New Large Housing Development" from Swindon Borough Council in 2020, this home offers a fantastic opportunity to join a thriving and attractive community. Early viewing is highly recommended to appreciate all that this delightful home has to offer.

Blunsdon Village offers a charming rural feel with local pubs, shops, and scenic walks, while being just minutes from Swindon's amenities and transport links. A friendly community, excellent schools, and easy motorway access make it ideal for families and commuters alike.

uPVC Double Glazing | Gas Central Heating | Mains Utilities

PROPERTY
HIGHLIGHT
HERE

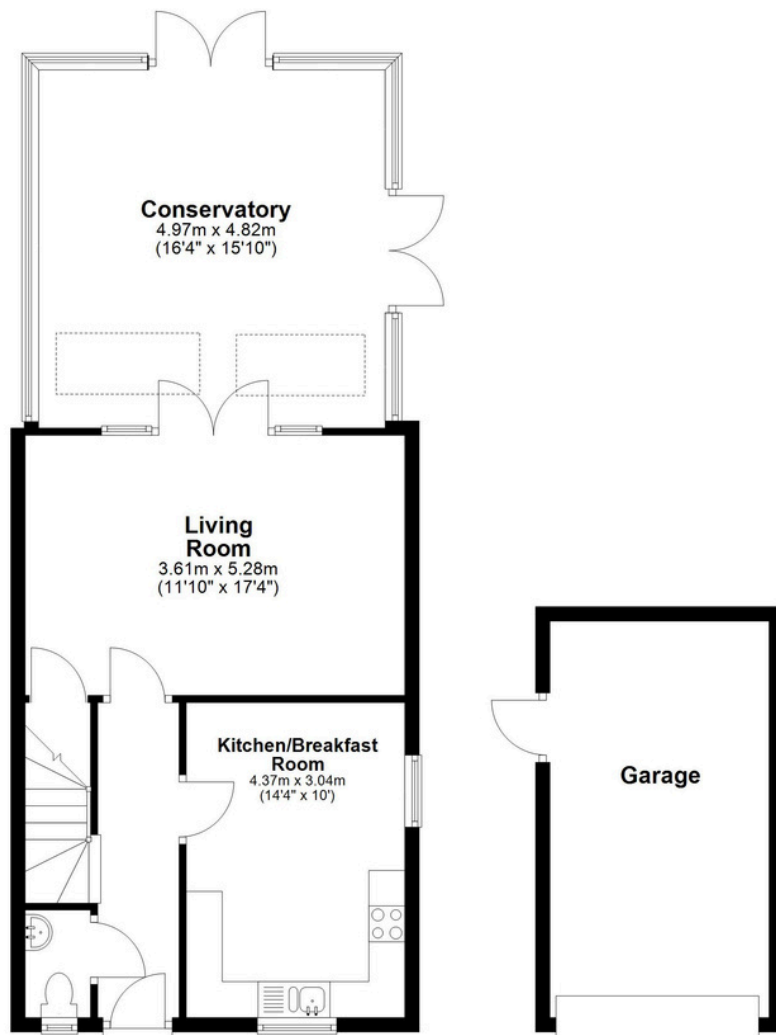






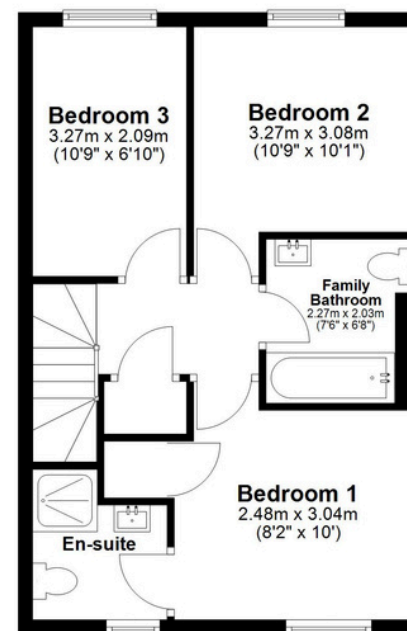
Ground Floor

Approx. 83.8 sq. metres (902.5 sq. feet)



First Floor

Approx. 42.6 sq. metres (459.1 sq. feet)



Total area: approx. 126.5 sq. metres (1361.5 sq. feet)

01793 765 292

highworth@richardjames.uk

36 High Street | Highworth | SN6 7AQ

richardjames.uk



@rjestateagent