



39 Bettertons Close, Fairford, GL7 4HY
Guide Price £350,000 to £375,000

richard james

Village & Country Homes



39 Bettertons Close

Fairford

Freehold | EPC Rating - c

 3
  2
  3

Property Description

A Charming Three-Bedroom Bungalow in the Heart of Fairford

Nestled in the highly sought-after town of Fairford, this delightful three-bedroom semi-detached bungalow offers versatile living space, perfect for a range of buyers.

Upon entering, a welcoming porch leads into a spacious hallway, providing access to a bright and airy lounge, a dining area, a well-appointed modern kitchen, and a shower room. The ground floor also boasts two generously sized double bedrooms.

Upstairs, a superbly designed first-floor space includes a further double bedroom, a bathroom, a home office, and a dressing area, ideal for those seeking additional flexibility.

Externally, the property benefits from a private driveway leading to a garage, while the low-maintenance rear garden provides a tranquil retreat for outdoor relaxation.

A further benefit for future owners is the inclusion of 12 solar panels.

A rare opportunity to acquire a fantastic home in a prime location – early viewing is highly recommended.



Nestled in the heart of the Cotswolds, the charming market town of Fairford is renowned for its stunning natural beauty, rich history, and vibrant community. Situated on the banks of the River Coln, Fairford offers an idyllic blend of countryside tranquillity and modern convenience, making it a highly desirable location for families, professionals, and retirees alike.

The town boasts an array of local amenities, including independent shops, traditional pubs, cosy cafés, and essential services, all set against a backdrop of picturesque Cotswold stone buildings. Fairford's thriving weekly market and annual events, such as the famous Royal International Air Tattoo at nearby RAF Fairford, contribute to the town's strong sense of community. Convenient connections to Cirencester, Swindon, and Oxford, while well-regarded schools make the area particularly appealing to families.



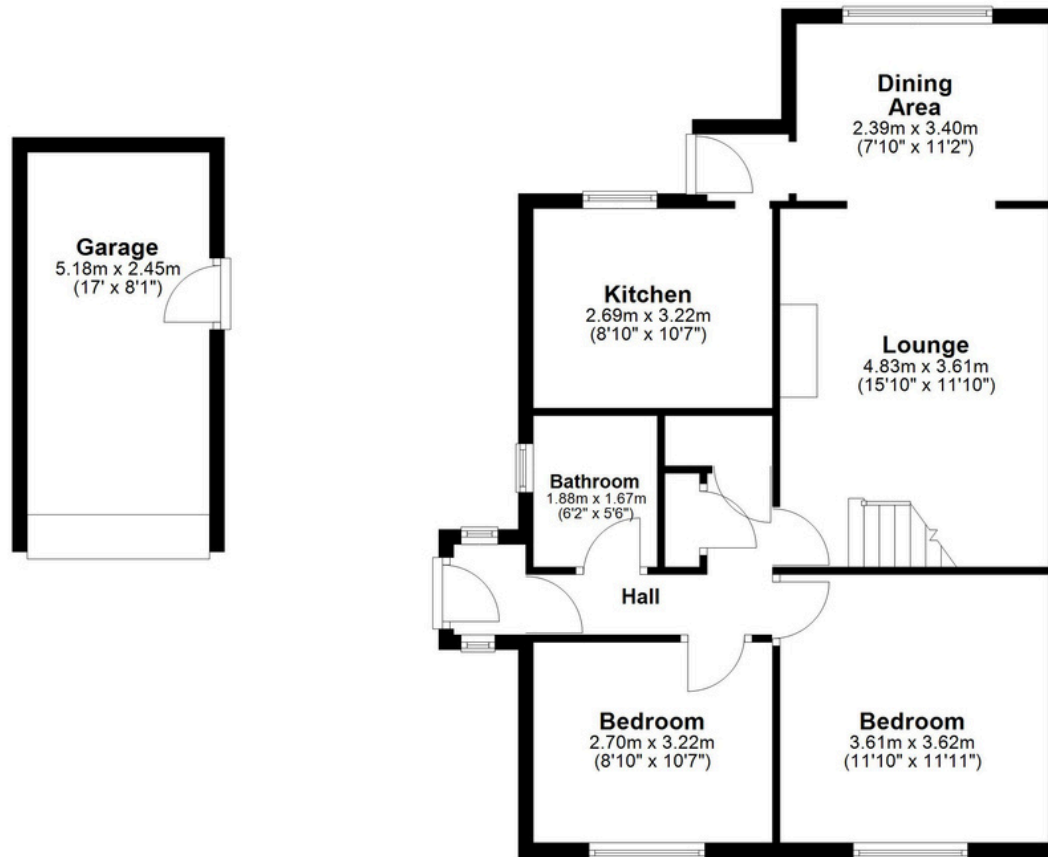




Floorplan

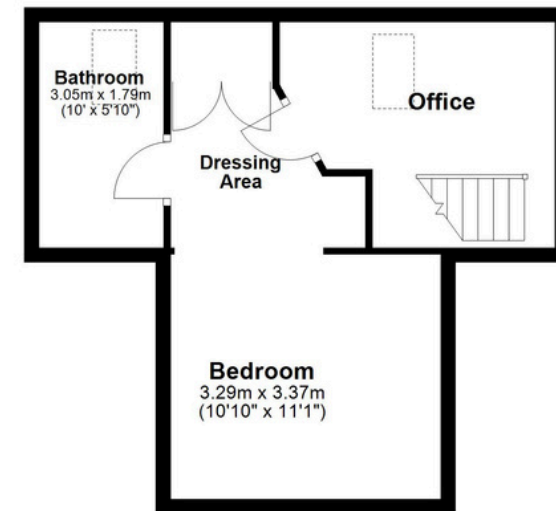
Ground Floor

Approx. 82.8 sq. metres (891.0 sq. feet)



First Floor

Approx. 32.9 sq. metres (353.9 sq. feet)



01793 765 292

highworth@richardjames.uk

36 High Street | Highworth | SN6 7AQ

richard james

richardjames.uk