

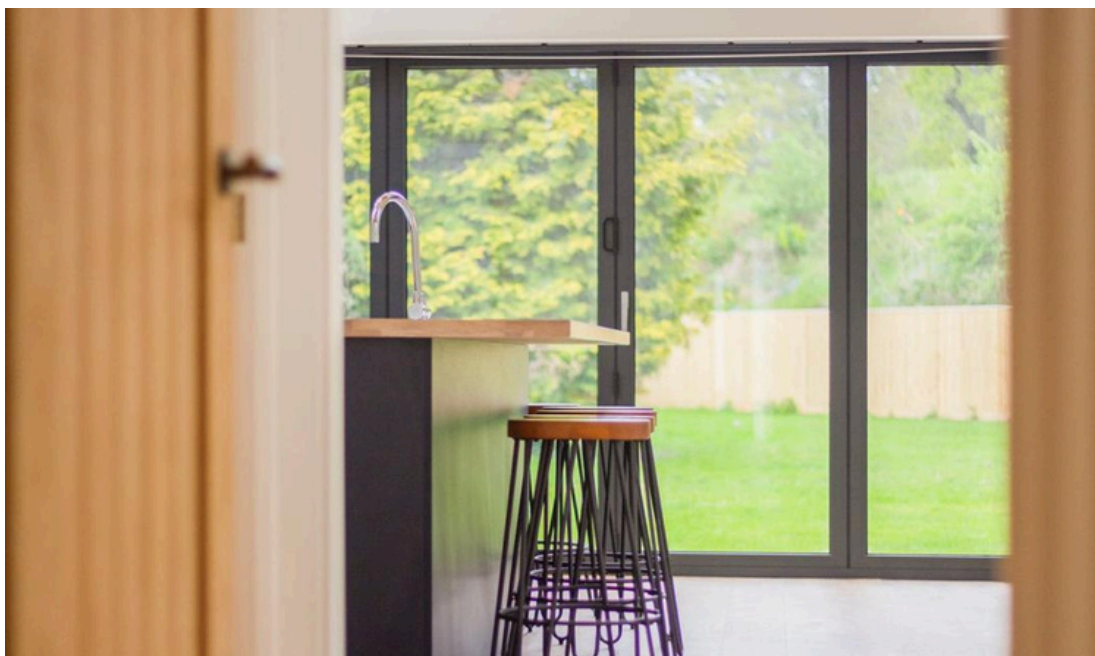


16, Briants Piece, Hermitage, Thatcham, RG18 9SX

Guide Price: £750,000 - £785,000

richard james

Village & Country Homes



Briants Piece, Hermitage

FREEHOLD

Council Tax Band - D | EPC Rating - B

 4
  2
  1

Nestled in a peaceful cul-de-sac within the sought-after village of Hermitage, this beautifully renovated and extended four-bedroom, two-bathroom bungalow is a true gem. Set on an impressive 0.28-acre plot and surrounded by enchanting woodland, this home offers both contemporary elegance and a tranquil retreat from the everyday hustle.

Step inside to discover approximately 1,270 square feet of thoughtfully designed accommodation, all conveniently arranged on a single level. The heart of the home is the breathtaking newly added 7.5m x 6.5m kitchen/dining/family room, where a striking vaulted ceiling with exposed beams creates a sense of grandeur. This stunning space is bathed in natural light, thanks to the expansive five-panel anthracite bifold doors that open seamlessly onto the rear garden. A central breakfast island provides a stylish focal point for entertaining, while a modern wood-burning stove adds warmth and charm.

Both the main bathroom and ensuite have been finished to an exceptional standard, boasting high-end contemporary fixtures for a spa-like experience.

Outside, the property continues to impress. The front garden has been beautifully landscaped with a gravel driveway, bordered by a fresh new fence, a Laurel hedge for added privacy, and gated side access. The rear garden is a haven for relaxation, featuring a large sandstone patio, a practical gravel storage area, a new fence, and a lush, well-kept lawn—perfect for enjoying the surrounding greenery.

Additional modern upgrades include PV solar panels, a new gas central heating system, a complete electrical rewire with a new fuse box, alarm system, and a dedicated EV charger—ensuring both efficiency and sustainability. The property is also ready for the future instillation of Air Source Heat Pump and Battery Storage.

With its prime location, exceptional design, and luxurious finishes, this remarkable bungalow offers the perfect blend of modern living and countryside charm. Don't miss the opportunity to make this stunning home your own!



Hermitage is a tranquil village in Berkshire, England, near Thatcham and Newbury. It offers a blend of rural charm and modern amenities, including a quaint village centre, excellent schools, and convenient transport links. The village benefits from easy access to the M34 and M4, making it an ideal location for commuters. Additionally, it is in close proximity to the sought-after The Downs School, known for its excellent academic reputation. The area features traditional homes, from cottages to spacious family houses, many with large gardens and countryside views.

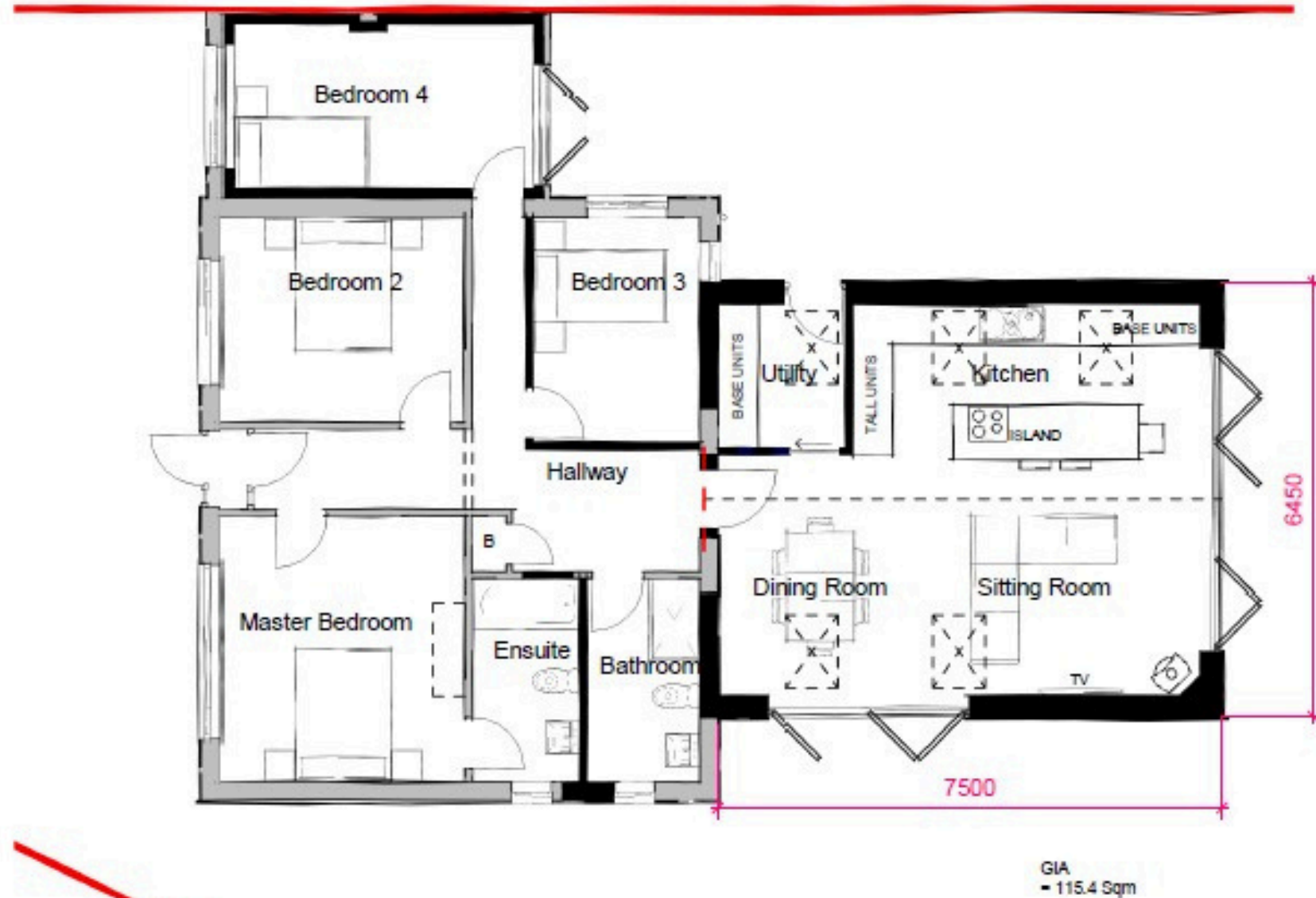








Floorplan



01793 765 292

highworth@richardjames.uk

36 High Street | Highworth | SN6 7AQ

richard james

richardjames.uk