



## Flat Ground Floor

Littlecote Drive, Birmingham

Offers In Excess Of **£60,000.00**

  
**Concentric**<sup>®</sup>  
SALES | LETTINGS | INVESTMENTS





## AT A GLANCE



|



|



|

- Allocated Parking
- Desirable Location
- Excellent Public Transport Links
- Good Access to A452
- No Upward Chain

## MATERIAL INFO

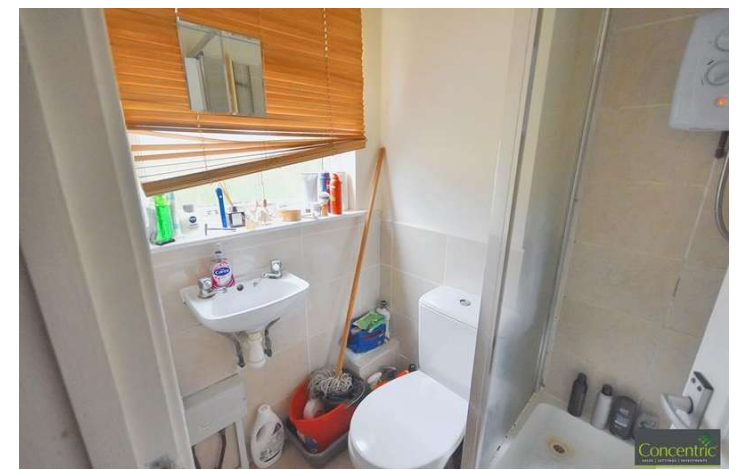
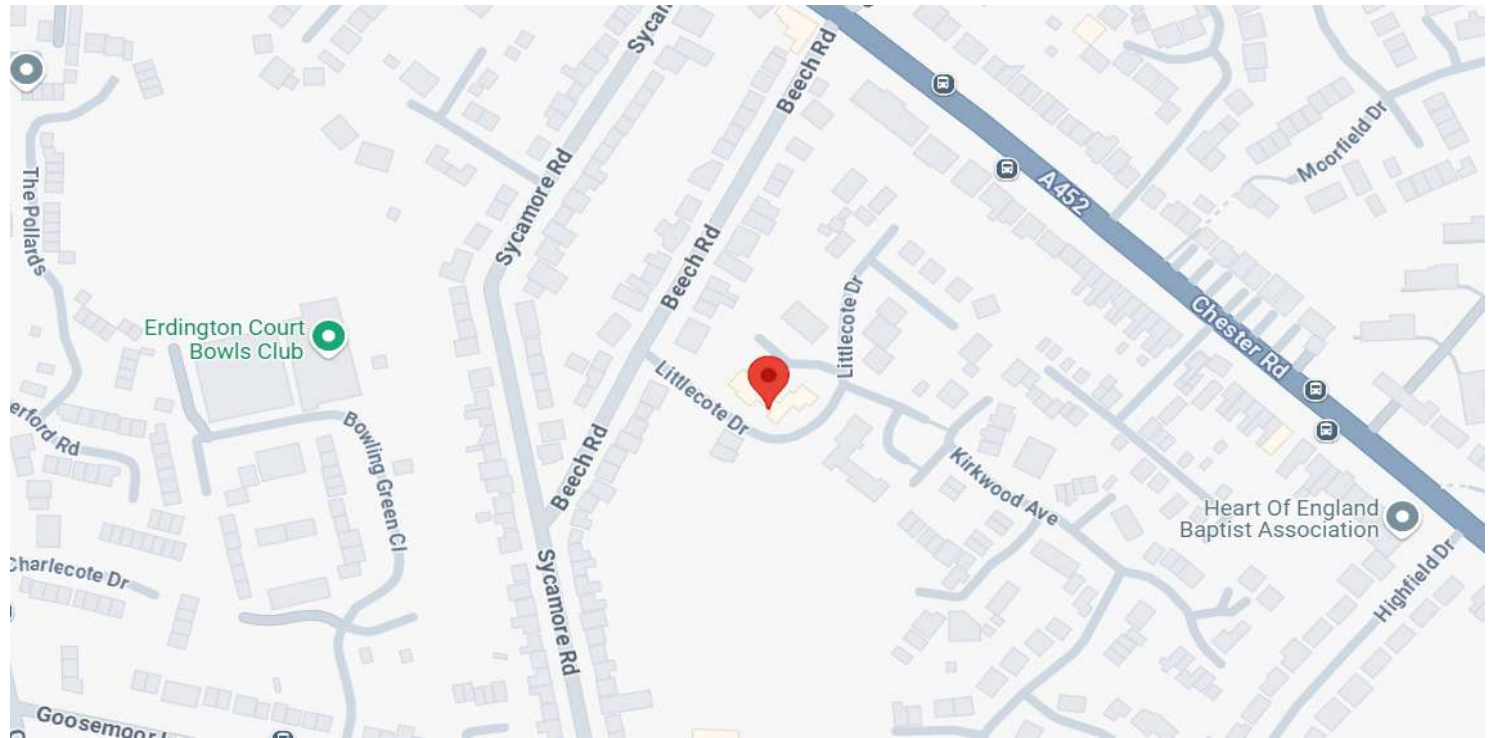
- Leasehold
- Years Remaining: 57
- Ground Rent: £40pa
- Service Charge: £965pa
- EPC - D
- Council Tax - A
- Electric Heating



## DESCRIPTION

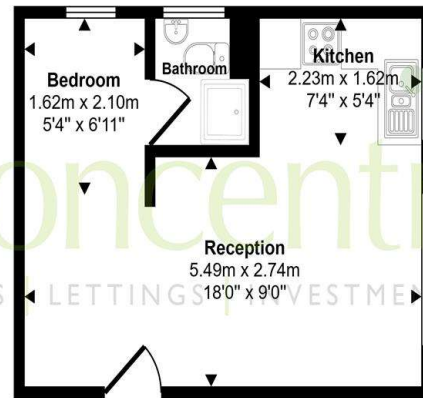
Situated in the sought-after Littlecote Drive of Birmingham, this charming studio ground floor flat is now available for sale. Boasting a leasehold tenure, this property offers a comfortable living space with a reception area.

Conveniently priced at £60,000, this property features desirable attributes such as allocated parking, no upward chain, and excellent public transport links. Its prime location provides easy access to the A452, making it an ideal choice for those seeking a residential property with great connectivity.



## FLOOR PLAN

Approx Gross Internal Area  
24 sq m / 263 sq ft



Floorplan

This floorplan is only for illustrative purposes and is not to scale. Measurements of rooms, doors, windows, and any items are approximate and no responsibility is taken for any error, omission or mis-statement. Icons of items such as bathroom suites are representations only and may not look like the real items. Made with Made Snappy 360.

## EPC RATING

Score	Energy rating	Current	Potential
92+	A		
81-91	B		
69-80	C		74 C
55-68	D	59 D	
39-54	E		
21-38	F		
1-20	G		

For more information about this property, or to book a viewing – please contact the us today and speak with one of our team of experts!

www.concentricproperty.co.uk

**Concentric**  
SALES | LETTINGS | INVESTMENTS



01902 421405  
concentricproperty.co.uk

Concentric (and its subsidiaries and their joint Agents where applicable) for themselves and for the vendors or lessors of this property for whom they act, give notice that (I) these particulars are a general outline only for the guidance of prospective purchasers or tenants, and do not constitute the whole or any part of an offer or contract (II) Concentric cannot guarantee the accuracy of any description, dimensions, references to conditions, necessary permissions for use and occupancy and other details contained herein and prospective purchasers or tenants must not rely on them as statements of fact or representations and must satisfy themselves as to their accuracy, (III) No employee of Concentric (and its subsidiaries and their joint Agents where applicable) has any authority to make or give any representation or warranty or enter into any contract whatever in relation to the property, (IV) Concentric (and its subsidiaries and their joint Agents where applicable) will not be liable in negligence or otherwise, for any loss arising from the use of these particulars and Concentric (and its subsidiaries and their joint Agents where applicable) have not tested any apparatus, equipment, fixtures and fittings or services and so cannot verify that they are in working order or fit for the purpose. A buyer is advised to obtain verification from their Solicitor, (V) Photographs will only show certain parts of the property and no assumptions should be made in respect of those parts of the property that have not been photographed, items or contents shown in the photographs are not included as part of the sale unless specified otherwise. It should not be assumed the property will remain as shown in the photographs. Photographs may have been taken using a wide-angle lens. Council Tax banding may be altered when a property sells following alterations, the banding shown within these details have been checked online upon commencement of marketing.