



**Flat 20, Southcote Lodge Burghfield Road, Reading, Berkshire, RG30 3NE**  
**£140,000 Leasehold**

**sansome & george**  
Residential Sales & Lettings



- Purpose built Retirement Apartment
- Exclusive to owners aged over 55
- Use of furnished Communal Outbuilding in Garden
- 8' fitted Kitchen
- 3 piece Bathroom with Shower over Bath
- Sought after Ground Floor position
- Overlooking well tended Communal Gardens
- 16' Living Room overlooking gardens behind
- 11' Bedroom with fitted Wardrobes
- Convenient location close to Buses & Shops

A lovely Ground Floor Apartment occupying a tucked away position within a popular retirement development exclusive to owners aged over 55 overlooking well tended grounds to the rear. Located on the outskirts of the Southcote area of Reading, regular Bus Services, Prospect Park, The Holy Brook and surrounding countryside plus Pubs, Shops, Supermarkets and Doctors Surgery are all within 1 mile. Offering self contained accommodation in a community setting with a Court Manager service to help and support independence, residents can enjoy use of Communal Garden Outbuilding (with Sun Lounge, two piece WC and Refreshments Area comprising sink, cupboards and fridge) and chose to participate in various activities organised by the Residents.

Accommodation comprises of Entrance Hall with built in airing cupboard and doors to front aspect Bathroom with three piece suite including Shower over Bath, side aspect Bedroom with built in and fitted wardrobes, and the 16' Living Room with rear aspect window looking over the well tended Gardens. A door from the Living Room opens to a the fitted rear aspect Kitchen. The property is further complemented by UPVC double glazed windows and electric heating throughout.

Please contact Sansome & George Estate Agents for any further information or to schedule a viewing appointment at your earliest convenience.

Reading Borough Council - Band C

#### LEASEHOLD INFORMATION:-

Lease Term:- 99 year lease assigned to new owner on completion

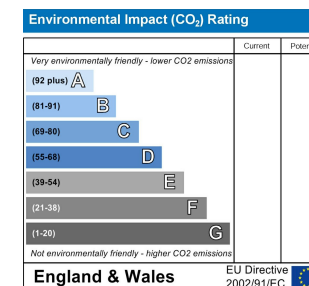
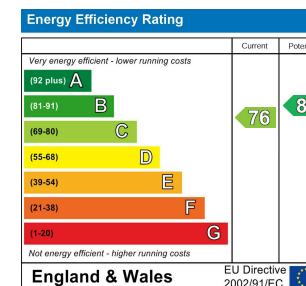
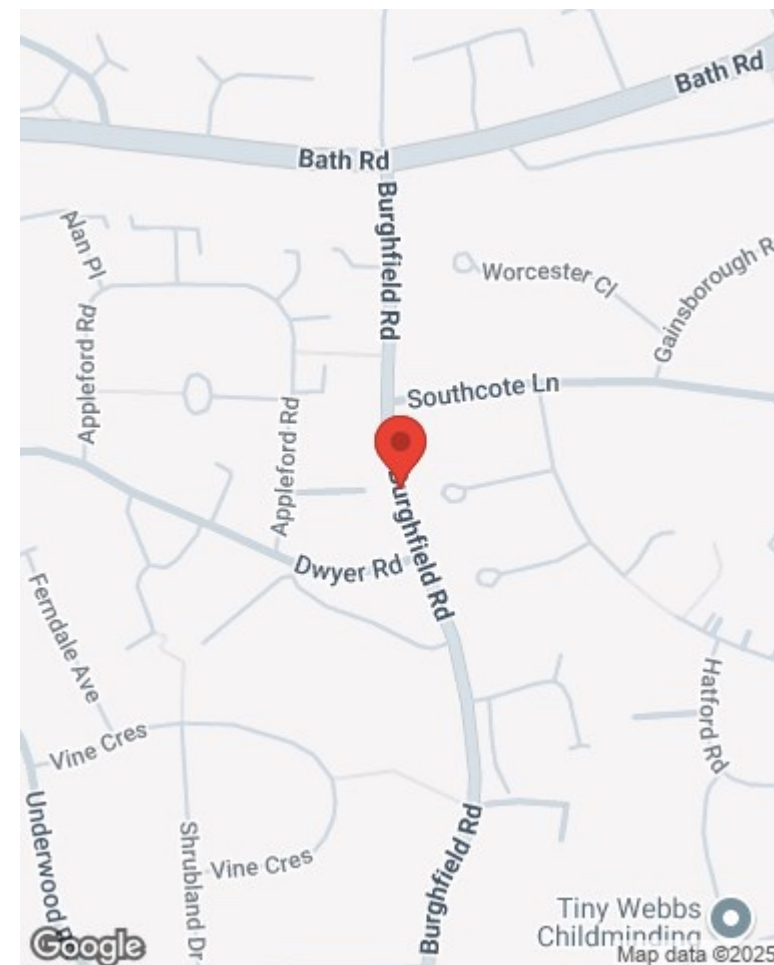
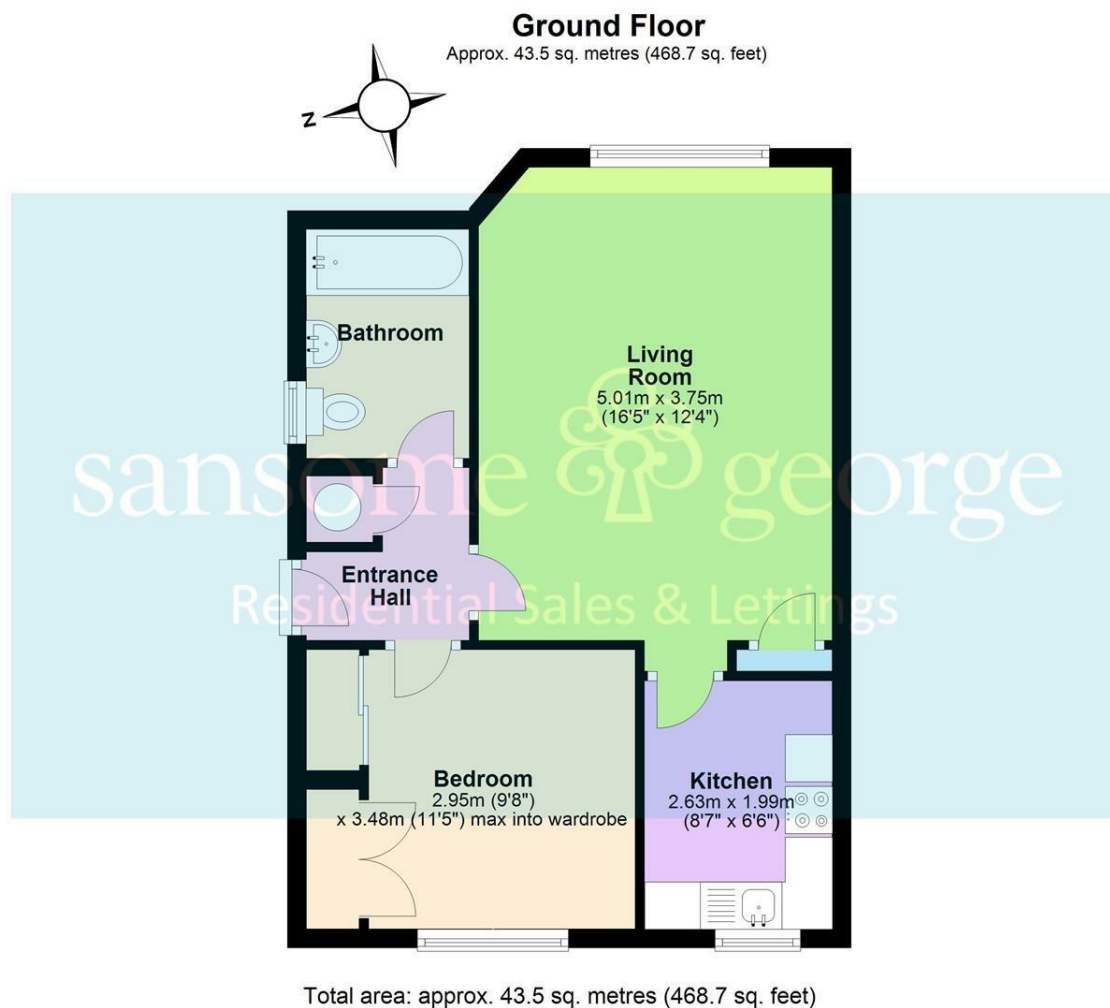
Management Company:- Housing 21

Ground Rent:- nil

Service Charges:- £2005.55 per annum (2023-2024) to include Buildings Insurance, Water Rates and Communal & Management Costs.

Initial Admin Fee:- £490 + VAT

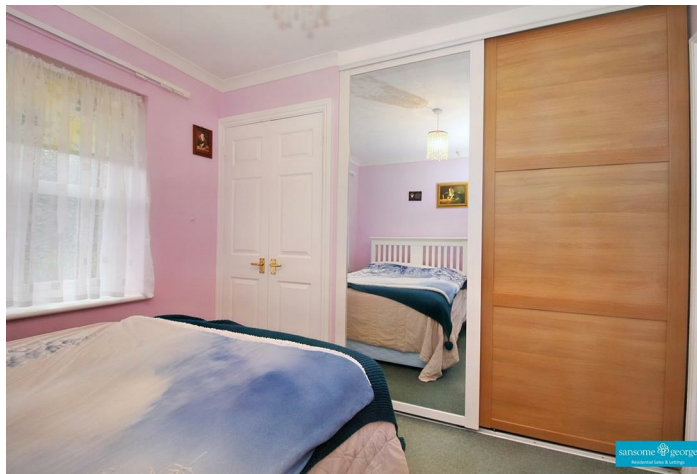




#### Misrepresentation and Misdescriptions Acts

Sansome & George Residential Sales & Lettings LTD for themselves and for the Vendors or Lessors of this property, whose agents they are, give notice that:- (1) these particulars are for guidance purposes only to intending Purchasers or Lessees and do not constitute, nor constitute any part of, an offer or a contract; (2) descriptions, dimensions, condition, use and other details are given without responsibility and intending Purchasers or Lessees are recommended to commission a structural survey and obtain legal advice; (3) Sansome & George Residential Sales & Lettings LTD or any person in their employ do not have any authority to make or give any representation or warranty in relation to the property, fixtures or fittings, mechanical and electrical services fitted thereto.





9 The Triangle, Tilehurst, Reading, Berkshire. RG30 4RN  
0118 942 1500 - [reading@sansome-george.com](mailto:reading@sansome-george.com)

sansome  george  
Residential Sales & Lettings