



Evershot Road, N4 3BB

£3,000 pcm



Evershot Road

£3,000 pcm

An expansive three-bedroom maisonette - with terrace - arranged over the upper floors of this Victorian conversion, an ideal location, just 10 minutes from Finsbury Park Station (Victoria & Piccadilly lines).

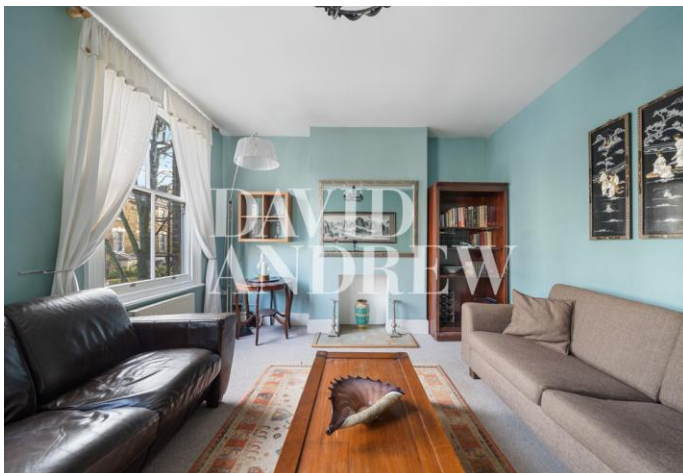
Features include a separate, spacious reception with wonderful large sash windows. At the rear, a separate kitchen with access to a private terrace. Boasting three large double bedrooms ideal for sharers, a modern bathroom, and an abundance of storage.

Ready for immediate occupation, viewing is highly recommended to fully appreciate the convenience of this location, the generosity of space on offer and the enjoyable natural light.

Located in a residential turning in popular Stroud Green, moments away from transport links, and a fantastic array of bars, restaurants and local shopping amenities.

- Three Double Bedrooms
- Private Terrace
- Victorian Conversion
- Arranged over upper levels
- Convenient location
- Suitable for sharers
- Offered Furnished
- Available Now





Notes

Archway Office

671 Holloway Road
London, N19 5SE

T (0)20 7619 3750

Highbury Office

90 Highbury Park
London N5 2XE

T (0)20 7354 9111

Stroud Green Office

167 Stroud Green Road
London N4 3PZ

T (0)20 7281 2000

General Contact

E info@davidandrew.co.uk

W www.davidandrew.co.uk

Score	Energy rating	Current	Potential
92+	A		
81-91	B		
69-80	C		80 C
55-68	D	61 D	
39-54	E		
21-38	F		
1-20	G		

Agent's Note:
Whilst Care has been exercised in the preparation of these sales particulars, statements about the property must not be relied upon as representations of statements or fact. Prospective purchasers must make and rely upon their own enquiries and those of professional representatives. The company accept not liability for any error contained in these particulars.

