



**Stapleton Hall Road, N4 3QD**  
**£1,900 pcm**

**DAVID  
ANDREW**

your  
most  
valuable  
asset



Presenting a spacious one bedroom apartment arranged over the top floor of this Victorian conversion, located just off Stroud Green road less than 15 minutes walk from Finsbury Park Station.

Features include a large semi open plan kitchen/reception room with beautiful bay windows overlooking the attractive architecture on Stapleton Hall Road. At the rear a sizeable double bedroom, three piece bathroom, split level hallway, gas central heating and ample storage throughout.

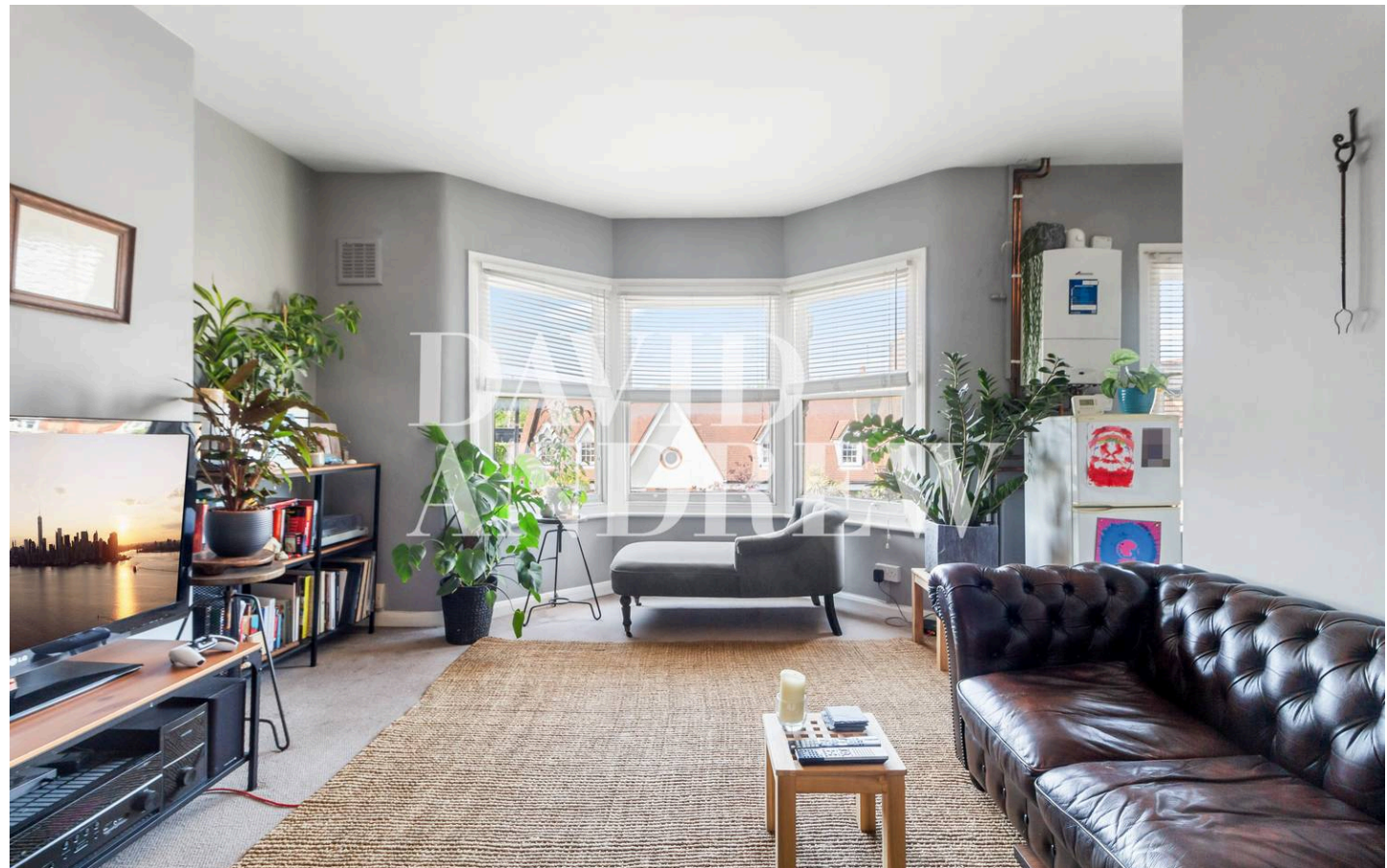
Situated in an excellent location with independent restaurants, bars and shops and great transport links - 0.6 Miles to Finsbury Park Station. Crouch Hill (Overground) station is also a moment's walk away. Offered Unfurnished, Available 24th of July.

Council Tax band: B

EPC Energy Efficiency Rating: C

EPC Environmental Impact Rating: C

- One Bedroom
- Split Level
- Victorian Conversion
- Modern throughout with Period Features
- Close to Finsbury Park station
- Excellent Location
- Available 24th of July
- Offered Unfurnished









---

**Archway Office**

---

671 Holloway Road  
London, N19 5SE

**T** (0)20 7619 3750

---

**Highbury Office**

---

90 Highbury Park  
London, N5 2XE

**T** (0)20 7354 9111

---

**Finsbury Park Office**

---

167 Stroud Green Road  
London, N4 3PZ

**T** (0)20 7281 2000

---

**Property Management Office**

---

235 Blackstock Road  
London, N5 2LL

**T** (0)20 7354 9222

**Agent's Note:**

Whilst care has been exercised in the preparation of these particulars, statements about the property must not be relied upon as representations of statements or fact. Prospective applicants must make and rely upon their own enquiries and those of professional representatives. David Andrew Estates accepts no liability for any error contained in these particulars.



*scan to book  
a viewing*