



Mount Pleasant Crescent, N4 4HL
£2,500 pcm

**DAVID
ANDREW** | your
most
valuable
asset

Nestled in a sought-after location just a short stroll from Finsbury Park Station, this exceptional two-bedroom end of terrace apartment offers a perfect blend of modern comforts and period features.

Boasting two double bedrooms, a private garden, and ample storage space, this property presents an ideal opportunity for anyone seeking a stylish urban retreat. The separate fully fitted modern kitchen, modern fully tiled bathroom, and wood flooring throughout add to the property's allure, while the high ceilings and generous natural light create a sense of space and airiness. With gas central heating ensuring year-round comfort, this home is a gem offering a lifestyle of convenience and charm. Externally, the property enjoys the added benefit of a private garden, providing a tranquil outdoor space for relaxation and al-fresco dining. This well-maintained outdoor area complements the apartment's interior, offering an appealing extension of living space and a perfect setting for enjoying the outdoors. Whether unwinding after a long day or hosting gatherings with friends and family, this private garden provides a secluded retreat in the heart of this vibrant neighbourhood.

Offering 659sqft/61.2sqm of living space, this residence is also just moments away from Finsbury Park, Parkland Walk, and the amenities of Crouch End. Available from the 7th of June, Offered Unfurnished.

Council Tax band: C

EPC Energy Efficiency Rating: D





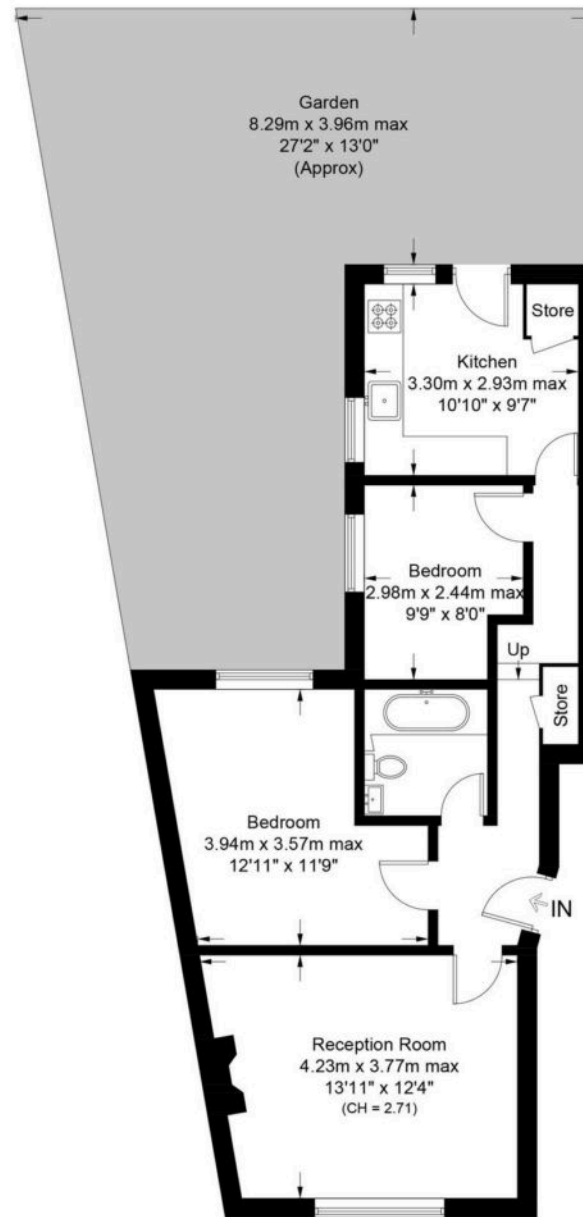


Mount Pleasant Crescent, N4

Approximate Gross Internal Area = 659 sq ft / 61.2 sq m

**DAVID
ANDREW**

your
most
valuable
asset



Ground Floor

Archway Office

671 Holloway Road
London, N19 5SE

T (0)20 7619 3750

Highbury Office

90 Highbury Park
London, N5 2XE

T (0)20 7354 9111

Finsbury Park Office

167 Stroud Green Road
London, N4 3PZ

T (0)20 7281 2000

Property Management Office

235 Blackstock Road
London, N5 2LL

T (0)20 7354 9222

scan to book
a viewing



**Certified
Property
Measurer**

This plan is for layout guidance only. Not drawn to scale unless stated. Windows and door openings are approximate. Whilst every care is taken in the preparation of this plan, please check all dimensions, shapes and compass bearings before making any decisions reliant upon them. (ID1192788)

**DAVID
ANDREW**

in these particulars.

as been exercised in the of these particulars, but the property must not be as representations of fact. Prospective applicants and rely upon their own those of professional s. David Andrew Estates ility for any error contained



safeagent