



Moray Road, N4 3LD

Guide Price £750,000
999 Leasehold



Moray Road N4 3LD

Welcome to Moray Road, N4. We are delighted to present this generously proportioned three-bedroom garden flat arranged over the ground and first floors of this handsome period building, located in the popular Finsbury Park area.

Offered chain-free and comprising 1104 sq. ft. (103.5 sq. m.), this property retains a wealth of period charm and character. The flat is accessed via a ground-floor communal entrance, shared between two flats within the building.

Internally, the flat offers a grand reception room with an attractive large bay window, retaining the original wood panel surround and fireplace. The space flows seamlessly into a central dining area and a galley-style kitchen, which enjoys direct access to, and a wonderful view over, the 60-foot private rear garden. With its lush greenery, the garden offers a tranquil escape, making you almost forget you are in central London.

Off the dining space, a door leads to the third bedroom, while the integral hall provides great built-in storage, making it an ideal space for a study or guest bedroom. Moving to the upper levels, the flat features two sizable double bedrooms—one at the front and one at the rear. Between these rooms is a three-piece bathroom suite with an additional separate WC, adding a touch of practicality.

Finsbury Park is a highly desirable location, offering excellent transport links, including Finsbury Park Station with Victoria and Piccadilly lines and National Rail services. The area is also home to expansive green spaces, perfect for outdoor activities and relaxation, along with a variety of shops, cafes, and restaurants.

This property is a perfect blend of period elegance and modern convenience, making it an ideal home in a sought-after location.





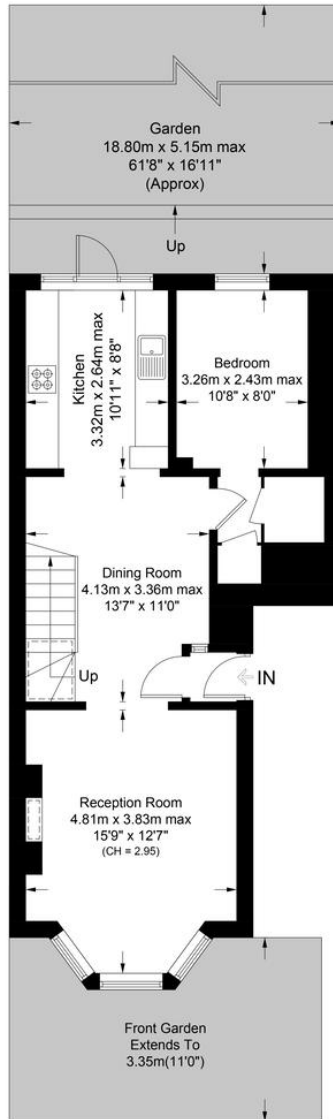


Moray Road, N4

Approximate Gross Internal Area = 1098 sq ft / 102 sq m
(Excluding Reduced Headroom & Void)
Reduced Headroom = 16 sq ft / 1.5 sq m
Total = 1114 sq ft / 103.5 sq m

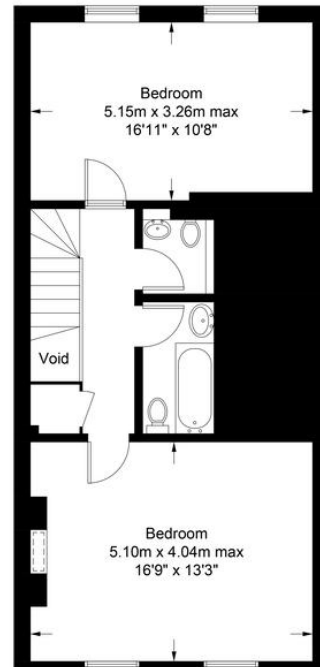
DAVID ANDREW

your most valuable asset



Ground Floor

= Reduced headroom below 1.5m / 5'0



First Floor

- Chain free sale
- Large private garden
- Three bedrooms
- Generous proportions
- Grand reception |
- Bathroom & separate WC
- Period charm
- 1104 sq. ft. (103.5 sq. m.)

Archway Office

671 Holloway Road
London, N19 5SE

T (0)20 7619 3750

Highbury Office

90 Highbury Park
London N5 2XE

T (0)20 7354 9111

Stroud Green Office

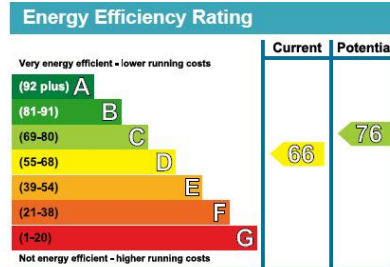
167 Stroud Green Road
London N4 3PZ

T (0)20 7281 2000

General Contact

E info@davidandrew.co.uk

W www.davidandrew.co.uk



Agent's Note:

Whilst Care has been exercised in the preparation of these sales particulars, statements about the property must not be relied upon as representations of statements or fact. Prospective purchasers must make and rely upon their own enquiries and those of professional representatives. The company accept not liability for any error contained in these particulars.



Certified Property Measurer

This plan is for layout guidance only. Not drawn to scale unless stated. Windows and door openings are approximate. Whilst every care is taken in the preparation of this plan, please check all dimensions, shapes and compass bearings before making any decisions reliant upon them. (ID1103165)

DAVID ANDREW | your most valuable asset

DA

