



2 Bedrooms

Apartment

PCM

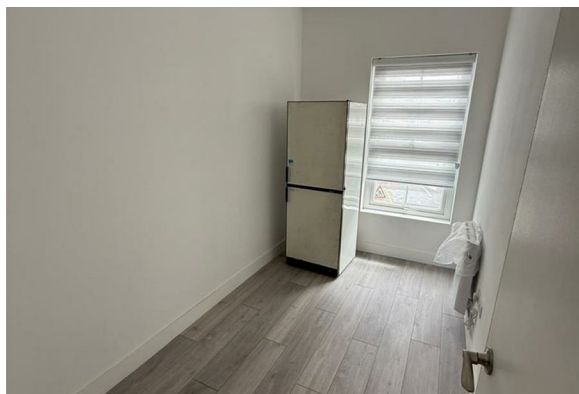
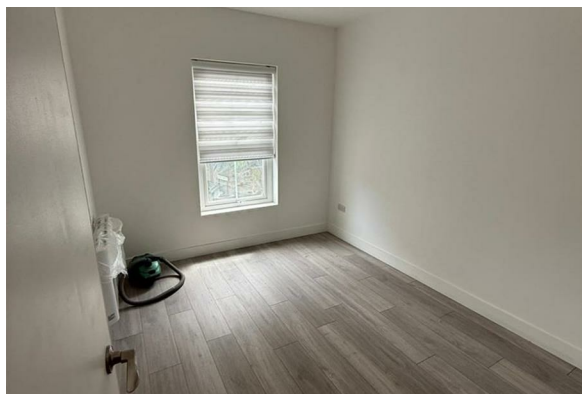
£1,900 PCM

Located in

London



<http://www.kilmers.co.uk>



Nestled on the vibrant Roman Road in London, this modern first-floor apartment offers a delightful living experience in one of the city's most sought-after areas. With two well-proportioned bedrooms, this residence is perfect for young professionals, couples, or small families seeking a comfortable and stylish home.

Spanning an impressive 592 square feet, the apartment boasts a contemporary design that maximises space and light. The open-plan layout creates a welcoming atmosphere, ideal for both relaxation and entertaining. The well-appointed bathroom adds to the convenience of this charming property, ensuring that all your needs are met.

One of the standout features of this apartment is its prime location. Just a 15-minute walk from Mile End Station, residents will enjoy excellent transport links to the rest of London, making commuting a breeze. The surrounding area is rich in amenities, with a variety of shops, cafes, and parks nearby, providing a perfect blend of urban living and community charm.

This modern apartment on Roman Road is not just a place to live; it is a lifestyle choice that offers comfort, convenience, and a vibrant local culture. Whether you are looking to invest or find your next home, this property is a fantastic opportunity that should not be missed.

Energy Efficiency Rating

Agents Note: Whilst every care has been taken to prepare these particulars, they are for guidance purposes only. All measurements are approximate and are for general guidance purposes only and whilst every care has been taken to ensure their accuracy, they should not be relied upon and potential buyers/tenants are advised to recheck the measurements.

4b ExCel Marina
Western Gateway
London
E16 1AT



info@kilmers.co.uk
020 7101 3000
<http://www.kilmers.co.uk>