



14 LIBERTY HOUSE

246 KINGSTON ROAD, RAYNES PARK, LONDON, SW20 8DA

& RICE
ROMAN

Sales | Lettings | Property Management

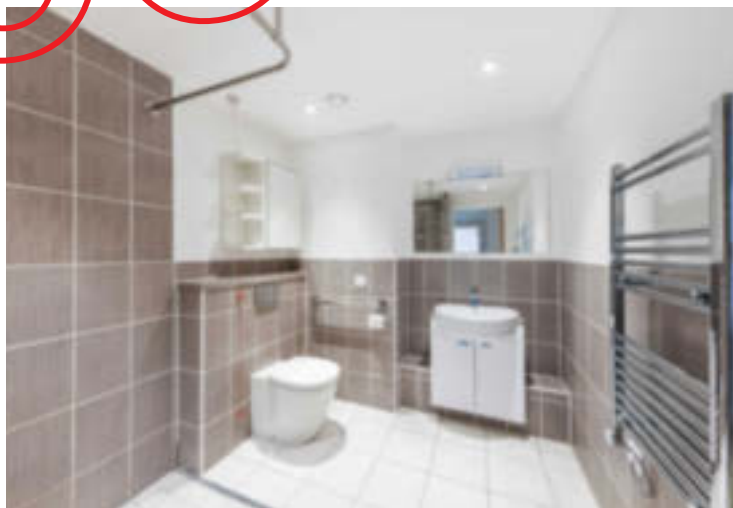


A large, south facing one bedroom apartment in excellent condition

£435,000

EPC Rating B

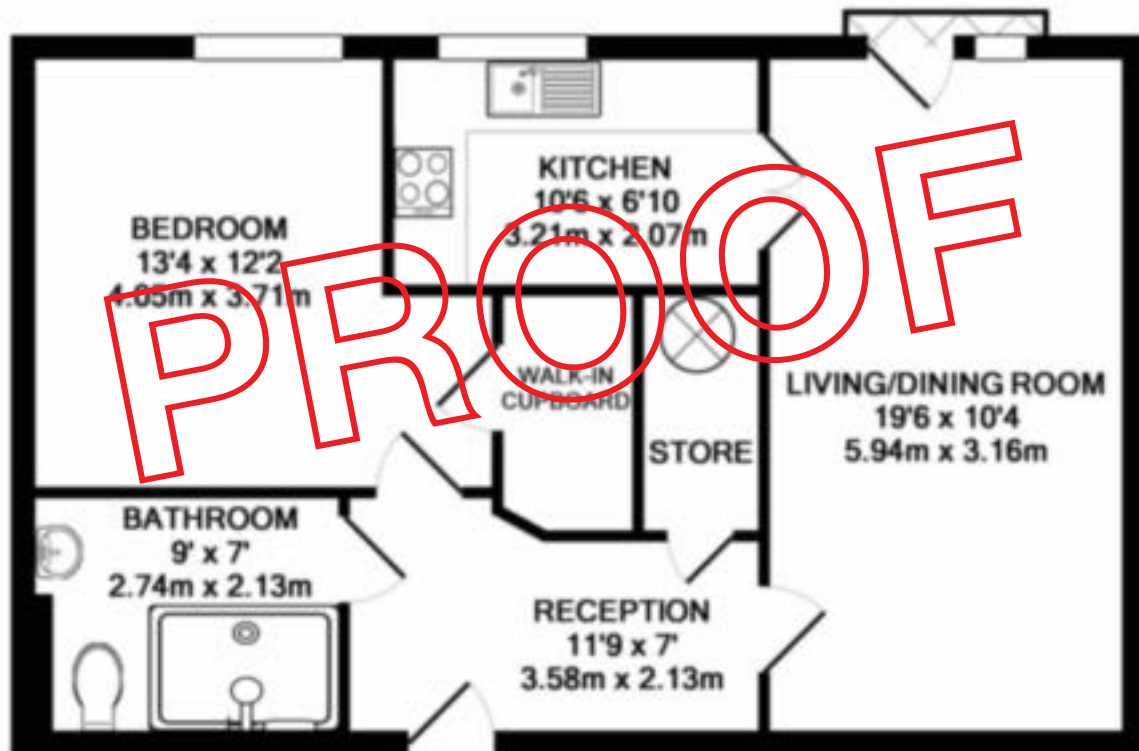
- Large One Bedroom Property
- Exclusively For Those Aged 70+
- First Floor Apartment With Lift Access
- Table Service Restaurant
- 24 Hour On-Site Management
- Landscaped Gardens And Roof Terrace



Retirement development exclusively for those aged 70 and over. A large south facing one bedroom apartment in the age-specific development of Liberty House, Raynes Park/Wimbledon. The apartment is in excellent condition throughout, and comprises a spacious reception room with juliet balcony, modern kitchen and wet room shower room, a double bedroom with walk-in wardrobe and a hallway plenty of storage. In addition, the apartment has underfloor heating.

Liberty House itself offers many facilities including onsite management 24 hours a day, a restaurant, wellbeing suite, function room and garden room, landscaped communal gardens and laundry rooms on each floor, gated parking, a beautiful roof terrace and lift access across all floors. Being an assisted living development, there are care service available which are customisable to residents needs which can be altered as needs change. Its located moments away from transport links into and out of Wimbledon, and also benefits from local groceries stores should you not be looking to move too far.

SERVICE CHARGE: £8,384.88 PA
GROUND RENT: £495 PA
LEASE LENGTH: 993 YEARS



FIRST FLOOR FLAT

These property details are set out as a general outline only and do not constitute any part of an Offer or Contract. Any services, equipment, fittings or central heating systems have not been tested and no warranty is given or implied that these are in working order. Buyers are advised to obtain verification from their solicitor or surveyor. Fixtures, fittings and other items are not included unless specifically described. All measurements, distances and areas are approximate and for guidance only. Room measurements are taken to be the nearest 10cm and prospective buyers are advised to check these for any particular purpose, e.g. Fitted carpets and furniture. This material is protected by the laws of copyright. The owner of the copyright is Countrywide Estate Agents. This property sheet forms part of our database rights and copyright laws. No unauthorised copying or distribution without permission.

01932 300456
info@riceandroman.co.uk
riceandroman.co.uk