

RICE+ROMAN



Bradbury Court, London

SW20 8BF

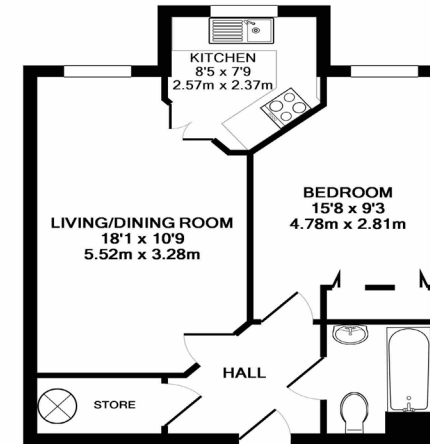




## Living Area

Bradbury Court, Clifton Park Avenue, London, SW20 8BF

**Bradbury Court, Clifton Park Avenue,  
Raynes Park SW20 8BF**  
INTERNAL FLOOR AREA (APPROX.) 470 sq ft/ 43.66 sq m



THIRD FLOOR FLAT

Whilst every attempt has been made to ensure the accuracy of the floor plan contained here, measurement of doors, windows, rooms and any other items are approximate and no responsibility is taken for any error, omission or mis-statement. Made with Metropix © 2018.

- For Those Aged 60+
- One Double Bedrooms
- Top Floor Apartment
- Resident's Lounge And Facilities
- On-Site Management
- Excellent Transport Links

**Price:** £165,000.00  
**Service Charge:** £3,378PA  
**Ground Rent:** £395 PA  
**Other Charges:** N/A  
**Lease Length:** 105 years left  
**Tenure:** Leasehold

**EPC Rating:** C

For more information  
please contact:

Rice & Roman  
T: 01344 981246  
E: [info@riceandroman.co.uk](mailto:info@riceandroman.co.uk)  
Lynwood Village, SL50FJ  
[www.riceandroman.co.uk](http://www.riceandroman.co.uk)

**RICE +  
ROMAN**

Agents Notices - These property details are set out as a general outline only and do not constitute any part of an Offer or Contract. Any services, equipment, fittings or central heating systems have not been tested and no warranty is given or implied that these are in working order. Buyers are advised to obtain verification from their solicitor or surveyor. Fixtures, fittings and other items are not included unless specifically described. All measurements, distances and areas are approximate and for guidance only. Room measurements are taken to be the nearest 10cm and prospective buyers are advised to check these for any particular purpose, e.g. fitted carpets and furniture. This material is protected by the laws of copyright. The owner of the copyright is Countrywide Estate Agents. This property sheet forms part of our database rights and copyright laws. No unauthorised copying or distribution without permission.