

RICE+ROMAN



Mowbray Hall, Egham

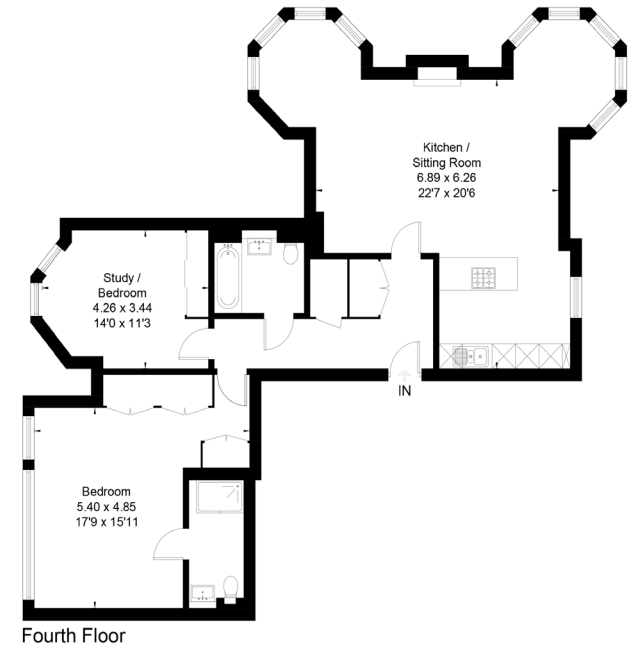
TW20 0LN



Living Area

Mowbray Hall, Marshall Walk Englefield Green, Egham

oor Area = 105.8 sq m / 1139 sq ft



er plan has been drawn in accordance with RICS Property Measurement 2nd edition.
Measurements, including the floor area, are approximate and for illustrative purposes only. @fourwalls-group.com #50750

- Exclusively For Those Aged 55 and over
- Two bedroom, Fourth Floor
- Immaculate condition
- Underground parking available
- Outstanding facilities and services
- 24/7 security gated entrance

Price: £895,000
Service Charge: £8,731 PA
Ground Rent: £0 PA
Other Charges: N/A
Lease Length: 244 Years
Tenure: Leasehold

EPC Rating: B

For more information
please contact:

Rice & Roman
T: 01344 981246
E: info@riceandroman.co.uk
Lynwood Village, SL50FJ
www.riceandroman.co.uk

RICE +
ROMAN

Agents Notices - These property details are set out as a general outline only and do not constitute any part of an Offer or Contract. Any services, equipment, fittings or central heating systems have not been tested and no warranty is given or implied that these are in working order. Buyers are advised to obtain verification from their solicitor or surveyor. Fixtures, fittings and other items are not included unless specifically described. All measurements, distances and areas are approximate and for guidance only. Room measurements are taken to be the nearest 10cm and prospective buyers are advised to check these for any particular purpose, e.g. fitted carpets and furniture. This material is protected by the laws of copyright. The owner of the copyright is Countrywide Estate Agents. This property sheet forms part of our database rights and copyright laws. No unauthorised copying or distribution without permission.