

RICE+ROMAN



Kings Place, Fleet

GU51 3FS





## Living Area

Kings Place, Fleet, Hampshire, GU51 3FS

- Exclusively For Those Aged 70+
- Two double bedrooms
- Bathroom and separate W/C
- South-west facing
- Overlooking communal gardens
- Communal lounge, library and sun room

**Price:** £225000

**Service Charge:** £13,252 PA

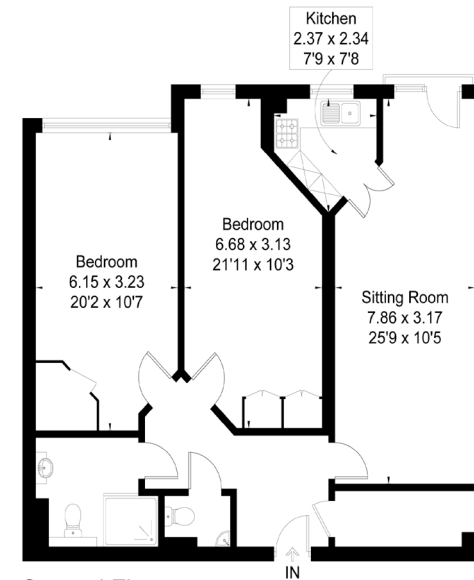
**Ground Rent:** £510 PA

**Other Charges:** £

**Lease Length:** 115 Years Left

**Tenure:** Leasehold

roximate Floor Area = 90.9 sq m / 978 sq ft



Second Floor

This floor plan has been drawn in accordance with RICS Property Measurement 2nd edition.  
All measurements, including the floor area, are approximate and for illustrative purposes only. @fourwalls-group.com #90933

**EPC Rating:** B

For more information  
please contact:

Rice & Roman  
T: 01344 981246  
E: info@riceandroman.co.uk  
Lynwood Village, SL50FJ  
www.riceandroman.co.uk

**RICE +  
ROMAN**

Agents Notices - These property details are set out as a general outline only and do not constitute any part of an Offer or Contract. Any services, equipment, fittings or central heating systems have not been tested and no warranty is given or implied that these are in working order. Buyers are advised to obtain verification from their solicitor or surveyor. Fixtures, fittings and other items are not included unless specifically described. All measurements, distances and areas are approximate and for guidance only. Room measurements are taken to be the nearest 10cm and prospective buyers are advised to check these for any particular purpose, e.g. fitted carpets and furniture. This material is protected by the laws of copyright. The owner of the copyright is Countrywide Estate Agents. This property sheet forms part of our database rights and copyright laws. No unauthorised copying or distribution without permission.