

RICE+ROMAN



Royston Court, Esher

KT10 OAF



Living Area

Royston Court, Manor Road North, Esher, Surrey

- Exclusively For Those Aged 60+
- Ground Floor Apartment
- Direct Access To Patio
- Residents Lounge
- Development Guest Suite
- Resident Manager

Price: £225,000
Service Charge: £3,714 PA
Ground Rent: £520 PA
Other Charges: £
Lease Length: 97 years left
Tenure: Leasehold

EPC Rating: C

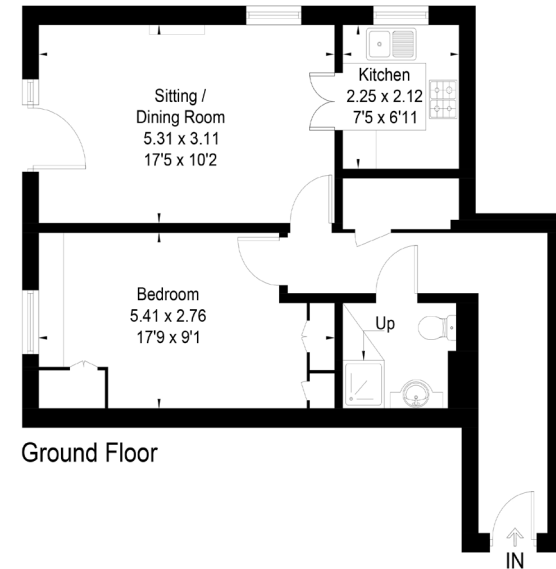
For more information
please contact:

Rice & Roman
T: 01344 981246
E: info@riceandroman.co.uk
Lynwood Village, SL50FJ
www.riceandroman.co.uk

**RICE +
ROMAN**

Agents Notices - These property details are set out as a general outline only and do not constitute any part of an Offer or Contract. Any services, equipment, fittings or central heating systems have not been tested and no warranty is given or implied that these are in working order. Buyers are advised to obtain verification from their solicitor or surveyor. Fixtures, fittings and other items are not included unless specifically described. All measurements, distances and areas are approximate and for guidance only. Room measurements are taken to be the nearest 10cm and prospective buyers are advised to check these for any particular purpose, e.g. fitted carpets and furniture. This material is protected by the laws of copyright. The owner of the copyright is Countrywide Estate Agents. This property sheet forms part of our database rights and copyright laws. No unauthorised copying or distribution without permission.

Approximate Floor Area = 52.5 sq m / 565 sq ft



Ground Floor



This floor plan has been drawn in accordance with RICS Property Measurement 2nd edition.
All measurements, including the floor area, are approximate and for illustrative purposes only. @fourwalls-group.com #76498