

RICE+ROMAN



Kathleen Godfree Court

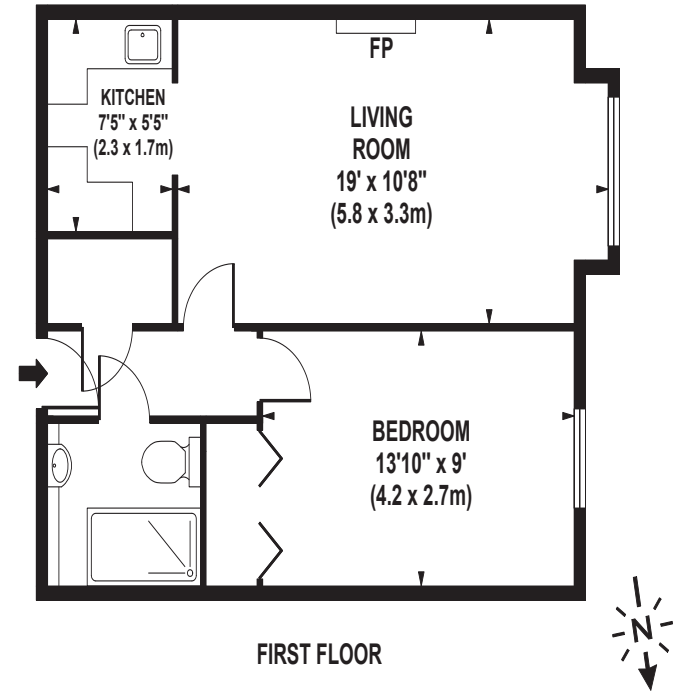
SW19 8LB





## Living Area

Kathleen Godfree Court,, 80 Queens Road, Wimbledon



FIRST FLOOR

**APPROX. GROSS INTERNAL FLOOR AREA 474 SQ FT / 44 SQ M**

Whilst every attempt has been made to ensure the accuracy of the floorplan contained here, measurements of doors, windows and rooms are approximate and no responsibility is taken for any error omission or mis-statement. These plans are for representation

- Exclusively For Those Aged 60+
- One Bedroom Apartment
- 1st Floor And Lift Accessible
- Redecorated Throughout
- Resident & Visitor Parking
- Minutes From Wimbledon Town Centre

**Price:** £239,950  
**Service Charge:** £3,202 PA  
**Ground Rent:** £577 PA  
**Other Charges:** £  
**Lease Length:** 89 years left  
**Tenure:** Leasehold

**EPC Rating:** B

For more information  
please contact:

Rice & Roman  
T: 01344 981246  
E: [info@riceandroman.co.uk](mailto:info@riceandroman.co.uk)  
Lynwood Village, SL50FJ  
[www.riceandroman.co.uk](http://www.riceandroman.co.uk)

**RICE +  
ROMAN**

Agents Notices - These property details are set out as a general outline only and do not constitute any part of an Offer or Contract. Any services, equipment, fittings or central heating systems have not been tested and no warranty is given or implied that these are in working order. Buyers are advised to obtain verification from their solicitor or surveyor. Fixtures, fittings and other items are not included unless specifically described. All measurements, distances and areas are approximate and for guidance only. Room measurements are taken to be the nearest 10cm and prospective buyers are advised to check these for any particular purpose, e.g. fitted carpets and furniture. This material is protected by the laws of copyright. The owner of the copyright is Countrywide Estate Agents. This property sheet forms part of our database rights and copyright laws. No unauthorised copying or distribution without permission.