

RICE+ROMAN



Bridge Court, Weybridge

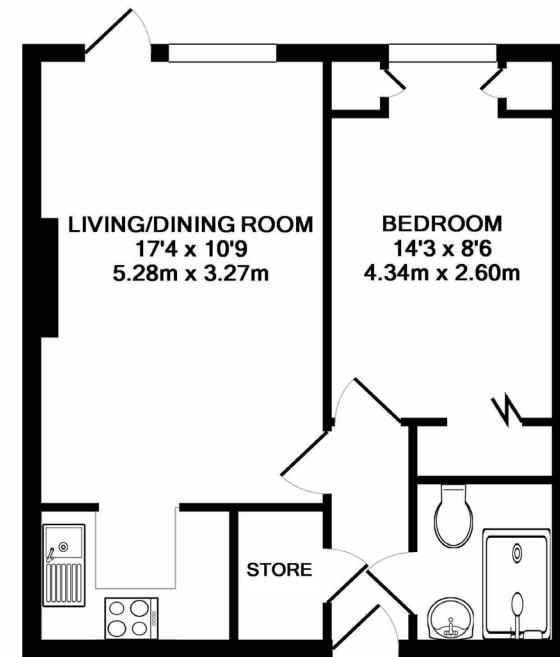
KT13 8BE



## Living Area

Bridge Court, Springfield Meadow, Weybridge, Surrey

INTERNAL FLOOR AREA (APPROX.) 445 sq ft/ 41.34 sq m



GROUND FLOOR FLAT

- Exclusively For Those Aged 60+
- Ground Floor With Patio
- 1 Large Double Bedroom
- Residents' Lounge and Laundry
- Development Guest-Suite
- Ample Parking For Residents & Guests

**Price:** £215,000  
**Service Charge:** £3,467 PA  
**Ground Rent:** £553 PA  
**Other Charges:** N/A  
**Lease Length:** 89 Years Left  
**Tenure:** Leasehold

**EPC Rating:** C

For more information  
please contact:

Rice & Roman  
T: 01344 981246  
E: [info@riceandroman.co.uk](mailto:info@riceandroman.co.uk)  
Lynwood Village, SL50FJ  
[www.riceandroman.co.uk](http://www.riceandroman.co.uk)

# RICE + ROMAN

Agents Notices - These property details are set out as a general outline only and do not constitute any part of an Offer or Contract. Any services, equipment, fittings or central heating systems have not been tested and no warranty is given or implied that these are in working order. Buyers are advised to obtain verification from their solicitor or surveyor. Fixtures, fittings and other items are not included unless specifically described. All measurements, distances and areas are approximate and for guidance only. Room measurements are taken to be the nearest 10cm and prospective buyers are advised to check these for any particular purpose, e.g. fitted carpets and furniture. This material is protected by the laws of copyright. The owner of the copyright is Countrywide Estate Agents. This property sheet forms part of our database rights and copyright laws. No unauthorised copying or distribution without permission.