

RICE+ROMAN



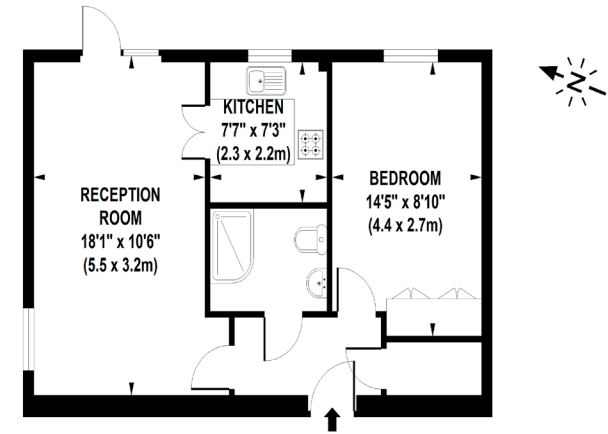
Mead Court, Addlestone

KT15 2PR



## Living Area

Mead Court, Station Road, Addlestone, Surrey, KT15 2PR



GROUND FLOOR

APPROXIMATE GROSS INTERNAL AREA 484 SQ FT/ 45 SQ M

Not to scale, for guidance only and must not be relied upon as a statement of fact.  
All measurements and areas are approximate only

- Exclusively For Those Aged 55+
- Ground Floor Apartment
- Views Over Communal Garden
- Modern Walk-In Shower
- Resident's Lounge & Laundry
- Resident And Guest Parking

**Price:** £150,000

**Service Charge:** £2,864 PA

**Ground Rent:** £295 PA

**Other Charges:** N/A

**Lease Length:** 106 years left

**Tenure:** Leasehold

**EPC Rating:** C

For more information  
please contact:

Rice & Roman  
T: 01344 981246  
E: info@riceandroman.co.uk  
Lynwood Village, SL50FJ  
www.riceandroman.co.uk

**RICE +  
ROMAN**

Agents Notices - These property details are set out as a general outline only and do not constitute any part of an Offer or Contract. Any services, equipment, fittings or central heating systems have not been tested and no warranty is given or implied that these are in working order. Buyers are advised to obtain verification from their solicitor or surveyor. Fixtures, fittings and other items are not included unless specifically described. All measurements, distances and areas are approximate and for guidance only. Room measurements are taken to be the nearest 10cm and prospective buyers are advised to check these for any particular purpose, e.g. fitted carpets and furniture. This material is protected by the laws of copyright. The owner of the copyright is Countrywide Estate Agents. This property sheet forms part of our database rights and copyright laws. No unauthorised copying or distribution without permission.