



4 FAIRVIEW COURT

GALSWORTHY ROAD, KINGSTON UPON THAMES, KT2 7LE

& RICE
ROMAN

Sales | Lettings | Property Management

A refurbished ground floor apartment with private patio

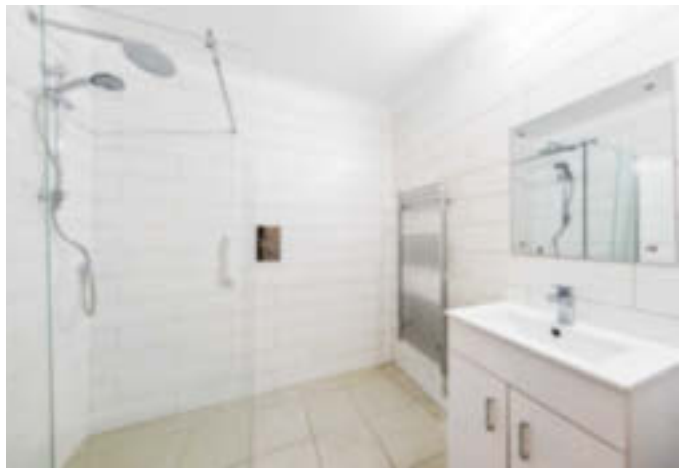
£225,000

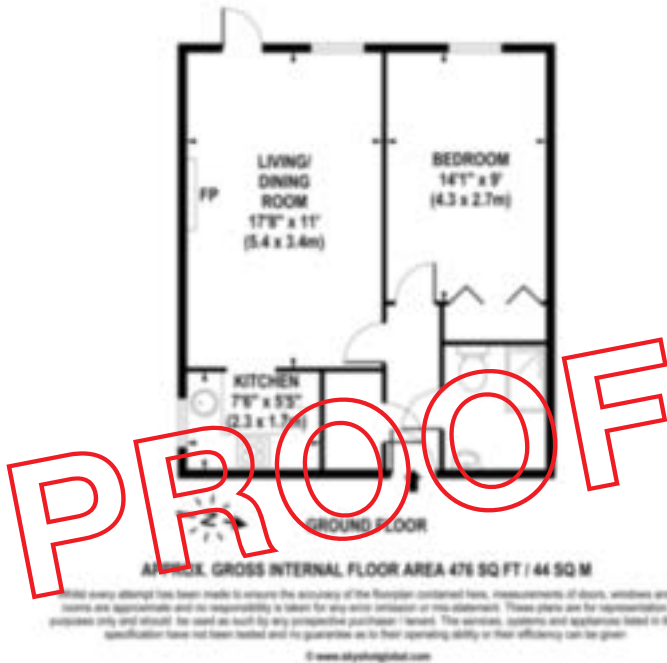
- **Exclusively For Those Aged 60+**
- **Ground Floor Apartment**
- **Direct Access To Patio**
- **West Facing Aspect**
- **Recently Fitted Kitchen**
- **Walk-In Shower**

This beautiful one bedroom apartment has been refurbished to a very high standard throughout and has been designed to optimise space, as well as providing a comfortable and practical environment for everyday retirement living. The property benefits from direct access to private patio and front garden, south west facing aspect, recently fitted kitchen with window and a stunning walk-in shower room. Both the living room and the bedroom has been redecorated, re-carpeted and with a bright and airy feel throughout this is an apartment not to be missed.

SERVICE CHARGE: £4,078 PA
GROUND RENT: £501.86 PA
LEASE LENGTH: 93 YEARS







These property details are set out as a general outline only and do not constitute any part of an Offer or Contract. Any services, equipment, fittings or central heating systems have not been tested and no warranty is given or implied that these are in working order. Buyers are advised to obtain verification from their solicitor or surveyor. Fixtures, fittings and other items are not included unless specifically described. All measurements, distances and areas are approximate and for guidance only. Room measurements are taken to be the nearest 10cm and prospective buyers are advised to check these for any particular purpose, e.g. Fitted carpets and furniture. This material is protected by the laws of copyright. The owner of the copyright is Countrywide Estate Agents. This property sheet forms part of our database rights and copyright laws. No unauthorised copying or distribution without permission.

01932 300456
 info@riceandroman.co.uk
 riceandroman.co.uk

