

# The Tennyson

Three bedroom home

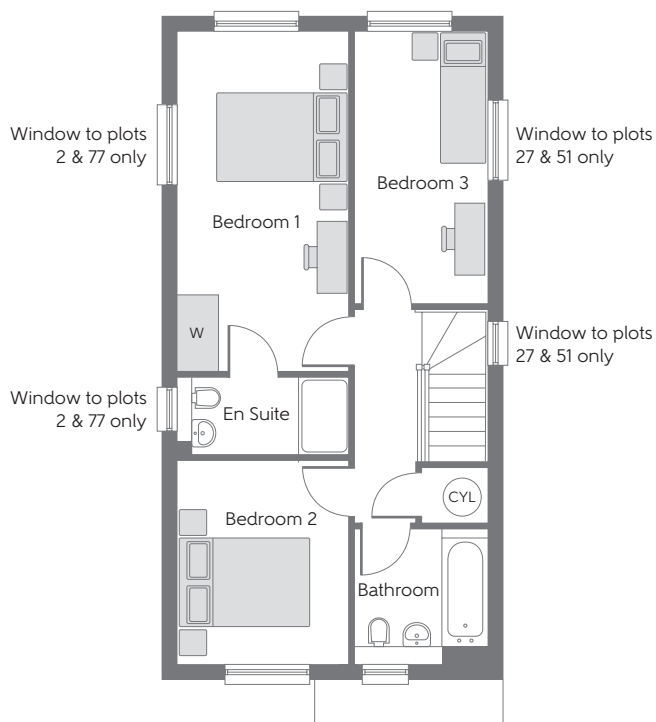
---



Bellway Homes (Thames Valley)  
Pacific House, Imperial Way, Reading  
Berkshire RG2 0TD

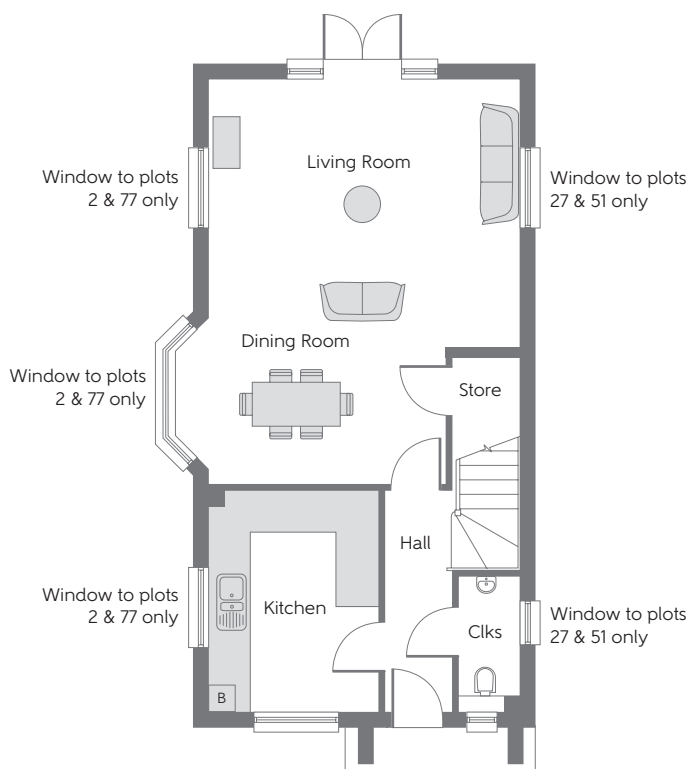
Tel: 0118 996 2329  
Fax: 0118 931 3929

**Bellway**



### First Floor

Bedroom 1	5.225m x 2.650m	17'1" x 8'8"
Bedroom 2	3.075m x 2.650m	10'1" x 8'8"
Bedroom 3	4.150m x 2.000m	13'7" x 6'7"



### Ground Floor

Kitchen	3.375m x 2.600m	11'0" x 8'6"
Living Room	4.725m x 4.100m	15'6" x 13'5"
Dining Room	3.675m x 2.125m	12'0" x 6'11"
Dining Room (Plot 2 & 77 only)	4.300m x 2.125m (max) (max)	14'0" x 6'11" (max) (max)

B Boiler    Clks Cloakroom    W Fitted Wardrobe    CYL Hot Water Cylinder    --- Reduced Head Height

Some items shown in this key may be subject to change, and positions could vary from those indicated on this floorplan. Please refer to Sales Advisor for details of your selected plot. Computer generated image shown overleaf. External finishes, landscaping and configuration may vary from plot to plot. Please refer to Sales Advisor for further details. All dimensions are approximate and should not be used for carpet sizes, appliance spaces or furniture. Furniture not to scale and all positions are indicative. We operate a policy of continuous improvement and individual features such as kitchen and bathroom layouts, doors, windows, garages and elevational treatments may vary from time to time. Consequently these particulars should be treated as general guidance only and do not constitute a contract, part of a contract or a warranty. 170548/09/17.