



Cyprus Avenue, Finchley, N3  
Weekly Rental Of £1,165

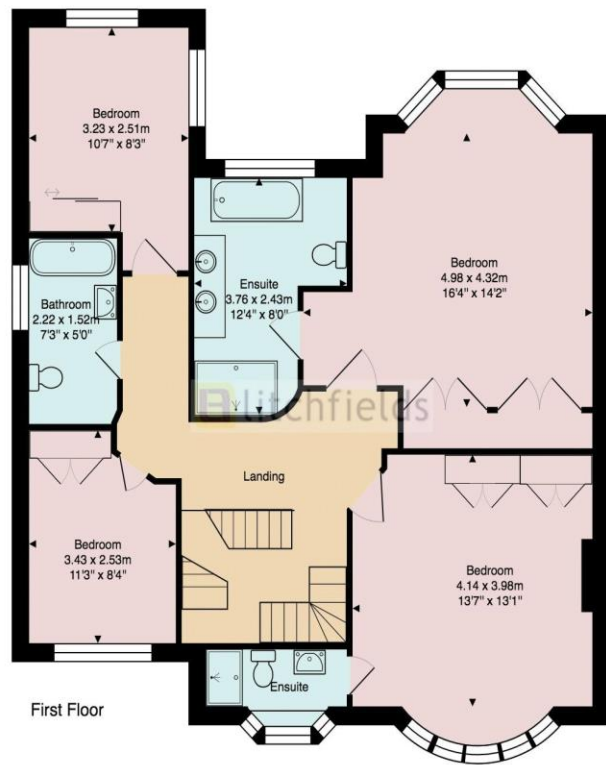
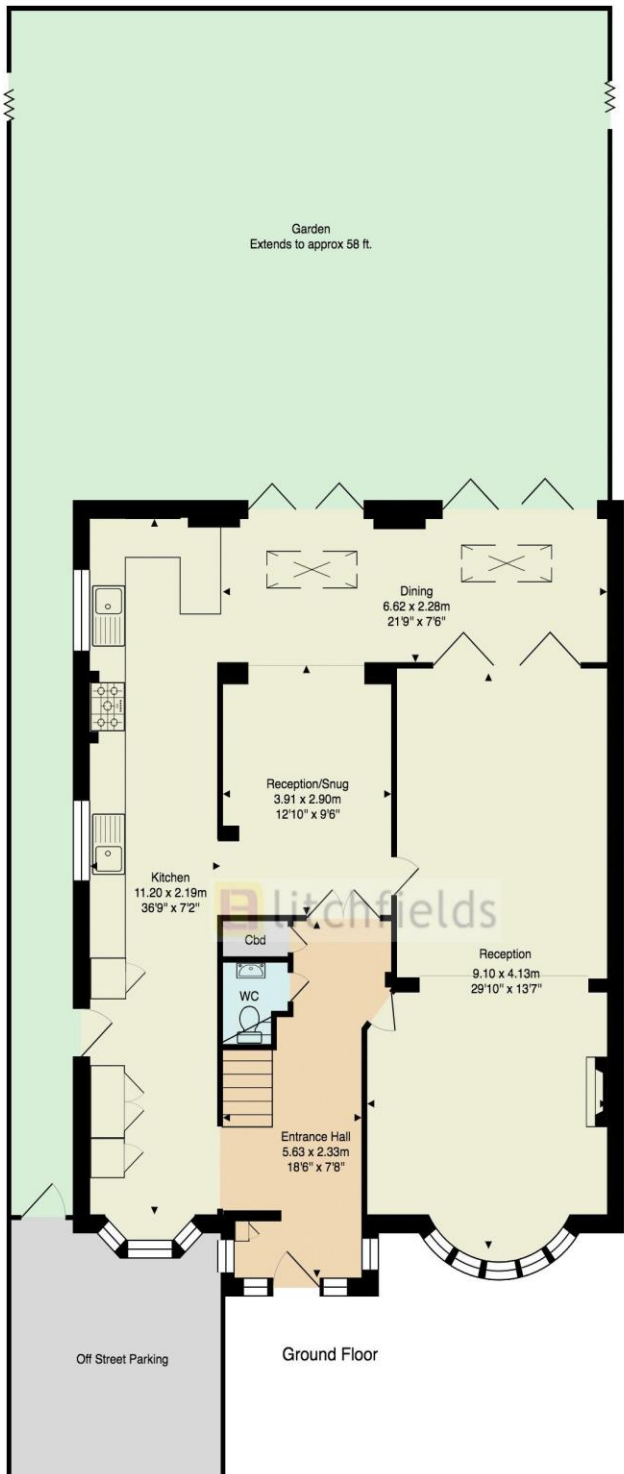


800 finchley road, hampstead garden suburb, london, nw11 7tj  
telephone 020 8458 5000 facsimile 020 8209 2068  
email [sales@litchfields.com](mailto:sales@litchfields.com) web [litchfields.com](http://litchfields.com)  
offices also in crouch end & highgate

A fabulous extended semi-detached family home offering luxury accommodation over 3 floors and lovingly restored over the last few years mixing period charm with contemporary fittings. Ideal for entertaining with its open plan reception rooms, ample family space and formal lounge/dining rooms. Period features include original parquet wood floors and fireplaces. Other features include Cat 6 cables & underfloor heating to the ground floor rear extension and kitchen and all upstairs bathrooms, Sonos speakers built in throughout. Comprising Entrance Hall, lounge with fireplace, dining room, open plan family/breakfast/tv room with wooden concertina doors onto large patio area, a superb hand painted luxury kitchen with range oven, stone work tops and two sinks with lots of storage, utility/study area, guest cloakroom. 1st floor: Master bedroom with stunning en-suite bathroom boasting an oversized steam shower room with sonos surround sound speakers, his and her vanity basins, bath and wc. Double fitted bedroom with en-suite modern shower room, two further single bedrooms and family bathroom. Top floor has a small Au Pair bedroom, modern shower room/wc, large double bedroom/playroom/home office. There is a driveway x 1 car to the front and a large south facing rear garden with lovely patio area. Unfurnished. EPC D.



Cyprus Avenue



Approx. Gross Internal Area: 241.6 m<sup>2</sup> ... 2601 ft<sup>2</sup> (excluding eaves/storage)

All measurements and areas are approximate only. Dimensions are not to scale. This plan is for guidance only and must not be relied upon as a statement of fact. (c) Peninsula Surveys Ltd





 litchfields



 litchfields