



Northway, Hampstead Garden Suburb, NW11

Freehold

£1,950,000



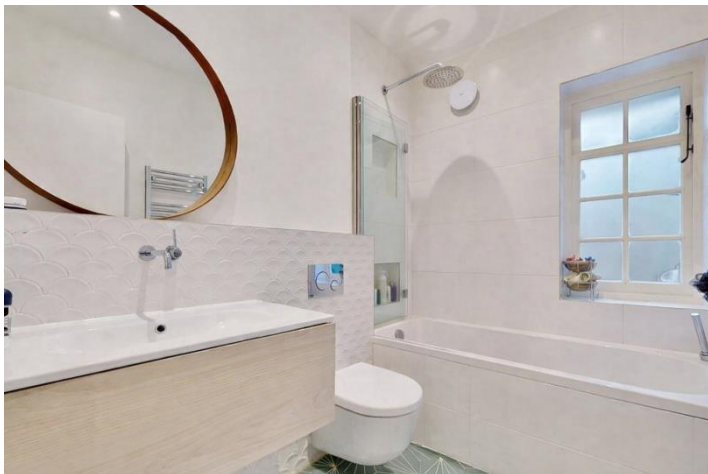
800 Finchley Road, Hampstead Garden Suburb, London, NW11 7TJ
020 8458 5000
sales@litchfields.com
www.litchfields.com

Offices also in Highgate

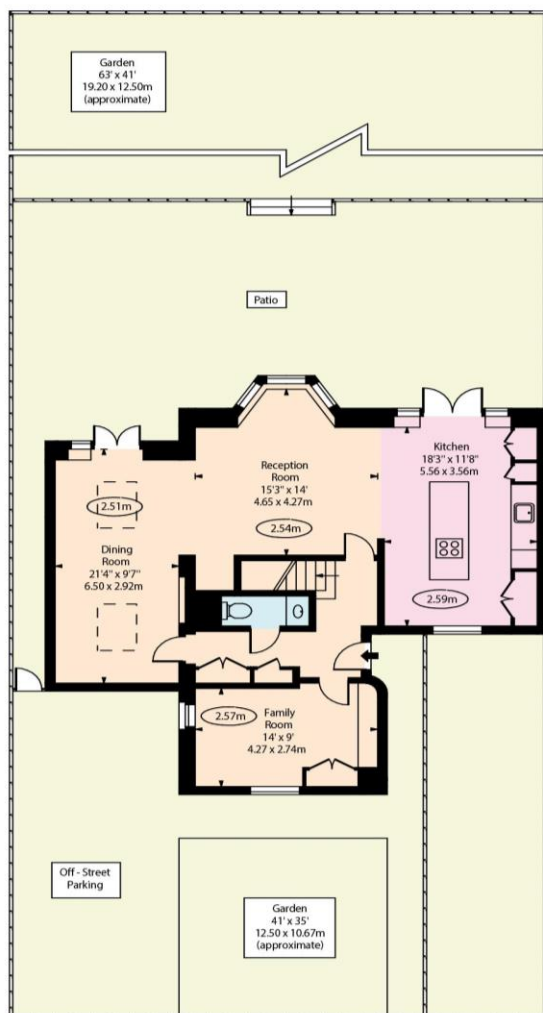
Conveniently positioned on this popular road just moments from shops, cafes and transport links of The Market Place and local parkland, this superb and spacious semi-detached house offers outstanding family accommodation in a highly desirable setting. The property features very generous open-plan ground floor living space, ideal for modern family life and entertaining, complemented by a separate family room. All accommodation is presented in excellent internal condition throughout. Upstairs, the home provides four well-proportioned bedrooms served by three bathrooms, enhancing both comfort and practicality. Stylish and thoughtfully arranged, this beautiful property is ready to move into. Early viewing is strongly advised to fully appreciate the space, quality, and location on offer.



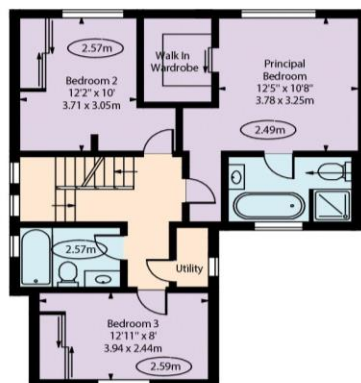
Principal Bedroom with walk in wardrobe and en suite bathroom | Three further bedrooms | Two further bathrooms (1 en suite)| Open-plan Kitchen/reception and Dining Room | Family Room | Cloakroom | Rear garden| Off street parking | EPC=C



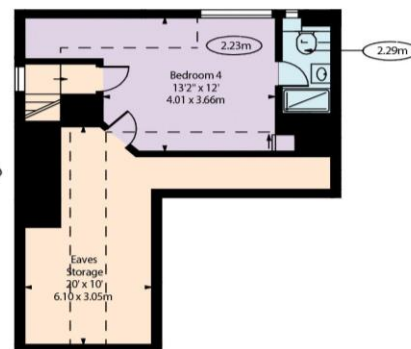
Northway,
Hampstead Garden Suburb, NW11



Ground Floor



First Floor



Second Floor

Approx Gross Internal Area 1864 Sq Ft - 173.17 Sq M
Approx Floor Area Including Restricted Heights 2127 Sq Ft - 197.60 Sq M

For Illustration Purposes Only - Not To Scale Floor Plan by www.nogaphotostudio.com Ref: No.53677

This floor plan should be used as a general outline for guidance only. Any intending purchaser or lessee should satisfy themselves by inspection, searches, enquiries and full survey as to the correctness of each statement. Any areas, measurements or distances quoted are approximate and should not be used to value a property or be the basis of any sale or let.