



Broadlands, North Hill, Highgate, N6

Weekly Rental Of £415



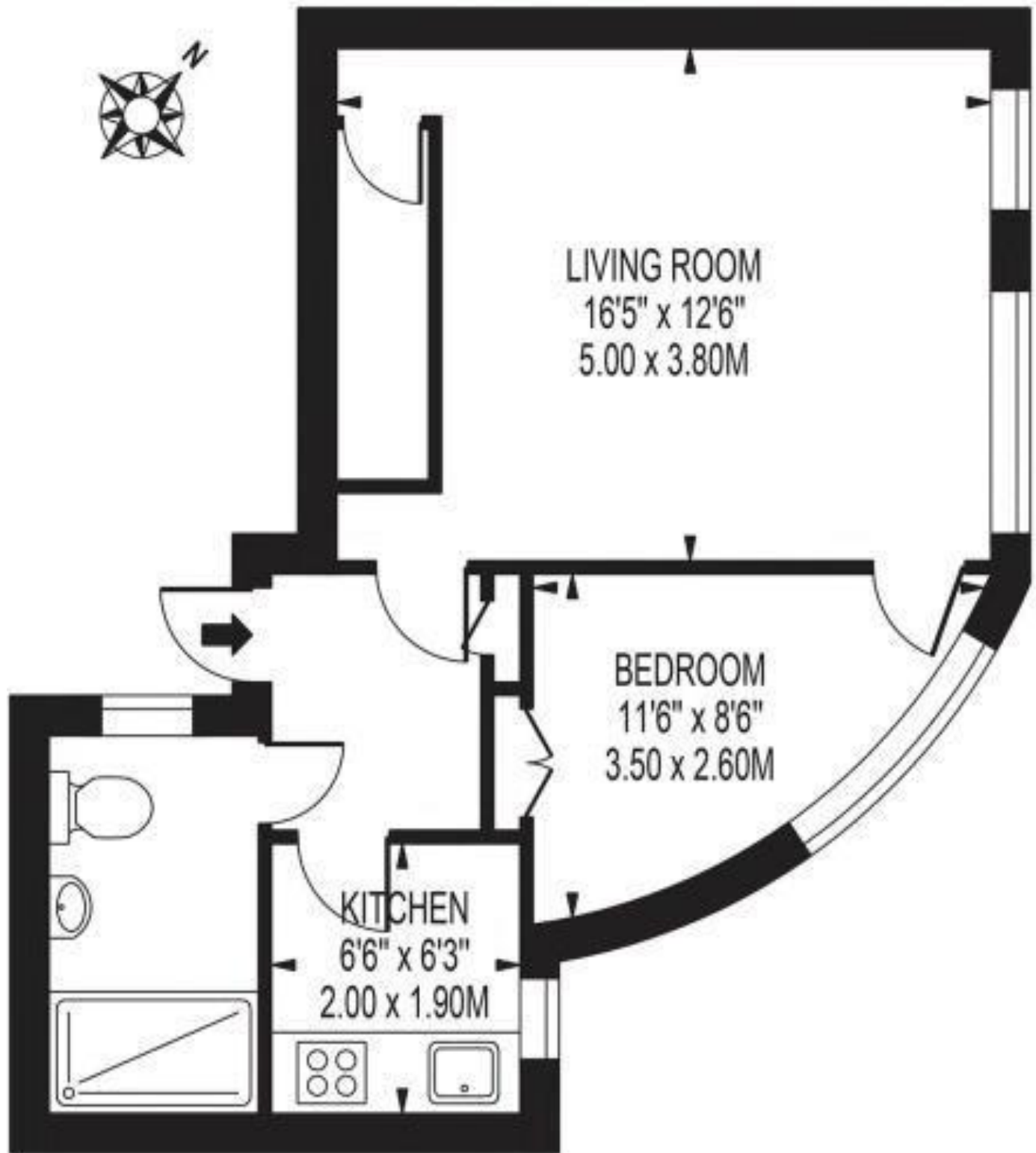
44 highgate high street, highgate village, london, n6 5hx
 telephone 020 8348 8000 facsimile 020 8348 8232
 email highgate@litchfields.com web litchfields.com
 offices also in hampstead garden suburb

A bright, well presented 1 bedroom top floor flat in this stylish Art-Deco purpose-built block. In addition to the main bedroom there is another 'floating' bedroom for guests. There is also a secure private storage shed. Very well located for local convenience shopping, Highgate tube and Woods and all the amenities of historic Highgate Village, Waterlow Park and the delights of Kenwood and the Heath just to the West. Available from 8th October 2024



BROADLANDS NORTH HILL

APPROXIMATE GROSS INTERNAL FLOOR AREA: 412 SQ FT - 38.30 SQ M



THIRD FLOOR

FOR ILLUSTRATION PURPOSES ONLY

THIS FLOOR PLAN SHOULD BE USED AS A GENERAL OUTLINE FOR GUIDANCE ONLY AND DOES NOT CONSTITUTE IN WHOLE OR IN PART AN OFFER OR CONTRACT. ANY INTENDING PURCHASER OR LESSEE SHOULD SATISFY THEMSELVES BY INSPECTION, SEARCHES, ENQUIRIES AND FULL SURVEY AS TO THE CORRECTNESS OF EACH STATEMENT. ANY AREAS, MEASUREMENTS OR DISTANCES QUOTED ARE APPROXIMATE AND SHOULD NOT BE USED TO VALUE A PROPERTY OR BE THE BASIS OF ANY SALE OR LET.