



Gaskell Road, Highgate, N6

Weekly Rental of £720 (Monthly Rental of £3,100)



44 highgate high street, highgate village, london, n6 5hx
 telephone 020 8348 8000 facsimile 020 8348 8232
 email highgate@litchfields.com litchfields.com
 offices also in hampstead garden suburb & crouch end

A three double bedroom period terraced cottage with a west facing garden. This charming house has been extended to include a rear reception/dining room and a loft conversion, which provides a double bedroom and an en-suite shower room. There are 2 further bedrooms and a family bathroom. Other benefits include a feature fireplace in the reception room, down stairs guest cloakroom, fitted kitchen, open to the rear reception which leads on to a 60 ft. (approx) west facing garden. Gaskell Road is located in a quiet Highgate residential enclave with a semi-rural outlook, by virtue of allotments to the rear and is within a half mile of historic Highgate Village and the delights of Kenwood and Hampstead Heath and a quarter of a mile to Highgate tube (Northern Line) and Highgate and Queens Woods and a 3 minute walk to the popular St Michaels CoE Primary School. Available furnished – 18th March 2024





Period cottage
Reception room with feature fireplace
Kitchen
Rear reception/dining room
Downstairs cloakroom
3 bedrooms, one with en-suite shower room
Family bathroom
Landscaped west facing patio and garden
Close to Village, tube, Woods,
Kenwood and the Heath
Furnished - available 5th November 2025

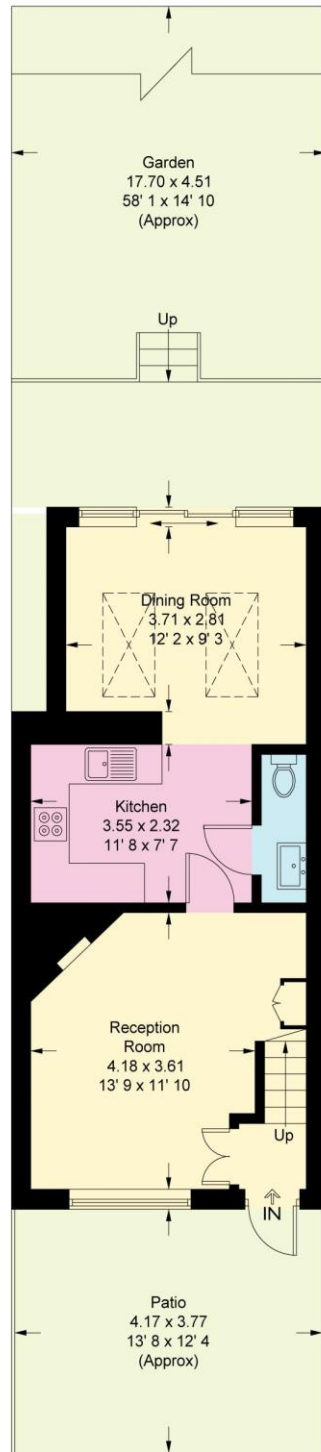


En-Suite in Loft Room



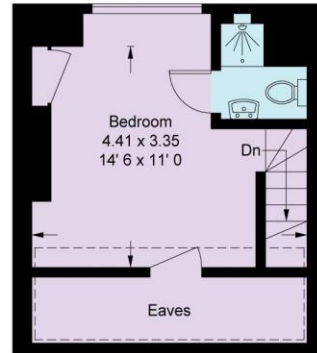
Gaskell Road

Approximate Gross Internal Area = 930 sq ft / 86.4 sq m
(Excluding Reduced Headroom / Eaves)
Reduced Headroom / Eaves = 63 sq ft / 5.9 sq m
Total = 993 sq ft / 92.3 sq m

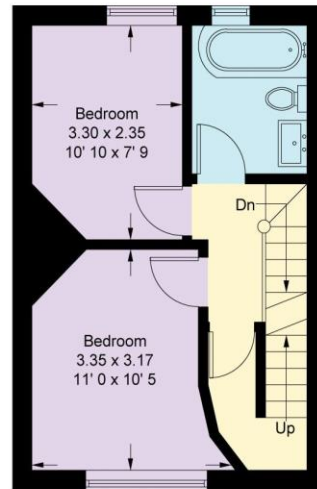


Ground Floor
450 sq ft / 41.8 sq m

= Reduced headroom below 1.5m / 5'0"



Second Floor
231 sq ft / 21.5 sq m
(Including Reduced Headroom / Eaves)



First Floor
312 sq ft / 29 sq m

This plan is not to scale and must be used as layout guidance only. All measurements and areas are approximate and should not be relied upon to provide accurate information. This plan must not be relied upon when making property valuations, design considerations or any other such relevant decisions. We accept no responsibility or liability (whether in contract, tort or otherwise) in relation to any loss whatsoever arising from or in connection with any use of this plan or the adequacy, accuracy or completeness of it or any information within it.