



Crouch Hall Road, Crouch End, N8

Monthly Rental Of £1,950



800 finchley road, hampstead garden suburb, london, nw11 7tj

telephone 020 8458 5000 facsimile 020 8209 2068

email sales@litchfields.com web litchfields.com

offices also in highgate

Litchfields are pleased to offer this super 2 bed top floor flat within an elegant period conversion on one of Crouch End's most sought after residential roads. Featuring an open plan reception-kitchen/dining space, with pleasant views to the rear, 2 double bedrooms and a family bathroom. Crouch Hall Road is a wide, tree lined residential avenue within a few hundred yards of bustling Crouch End Broadway with its full array of restaurants, cafés and excellent shopping as well as very good transport links.



2



1



1

EPC



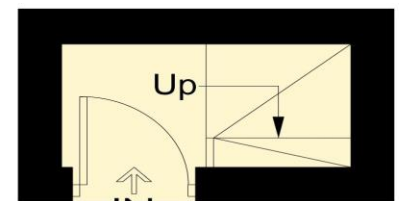
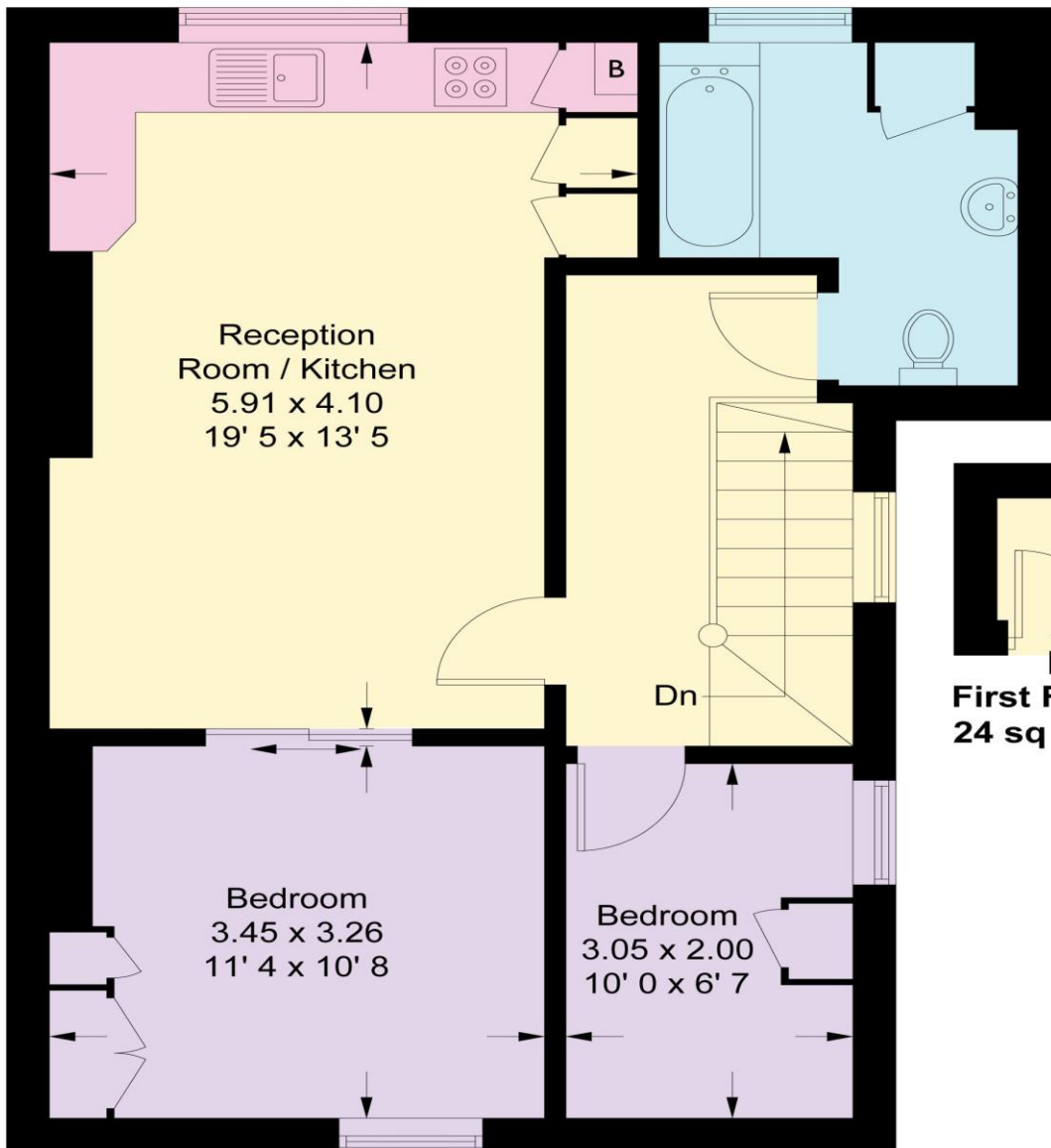
Top floor flat in period conversion | Open plan reception/dining/kitchen area | Two bedrooms | Family Bathroom | Stone's throw from Crouch End Broadway

shops & restaurants | Fast access to transport links to central London & the City | Wood floors | Unfurnished|



Crouch Hall Road

Approximate Gross Internal Area = 618 sq ft / 57.4 sq m



First Floor
24 sq ft / 2.2 sq m

Second Floor
594 sq ft / 55.2 sq m

This plan is not to scale and must be used as layout guidance only. All measurements and areas are approximate and should not be relied upon to provide accurate information. This plan must not be relied upon when making property valuations, design considerations or any other such relevant decisions. We accept no responsibility or liability (whether in contract, tort or otherwise) in relation to any loss whatsoever arising from or in connection with any use of this plan or the adequacy, accuracy or completeness of it or any information within it.

For similar properties please visit our website www.litchfields.com

Or call us on 0208 458 8000

