



Oakwood Crescent, Winchmore Hill, N21

Monthly Rental Of £3,500



800 finchley road, hampstead garden suburb, london, nw11 7tj

telephone 020 8458 5000 facsimile 020 8209 2068

email sales@litchfields.com web litchfields.com

offices also in highgate

litchfields limited registered in england no. 2373684 registered office 470a green lanes, london n13 5pa



Much improved and extended 4/5 bedroom semi detached property situated in this sought after turning within walking distance of Eversley Primary School and Highlands Secondary School. Benefitting from a front reception room, large kitchen/diner/reception, 3 bath/shower rooms and a south facing rear garden with a detached garage. Front driveway for 3 cars. Situated moments from Oakwood Park, local shops, excellent transport links via Southgate (Piccadilly Line) and Winchmore Hill (mainline) stations. The property is unfurnished and is available mid August 2025.







4/5 Bedrooms

Large kitchen/diner/reception

3 bath/shower rooms

South facing Rear Garden

Large detached garage

Off Street Parking

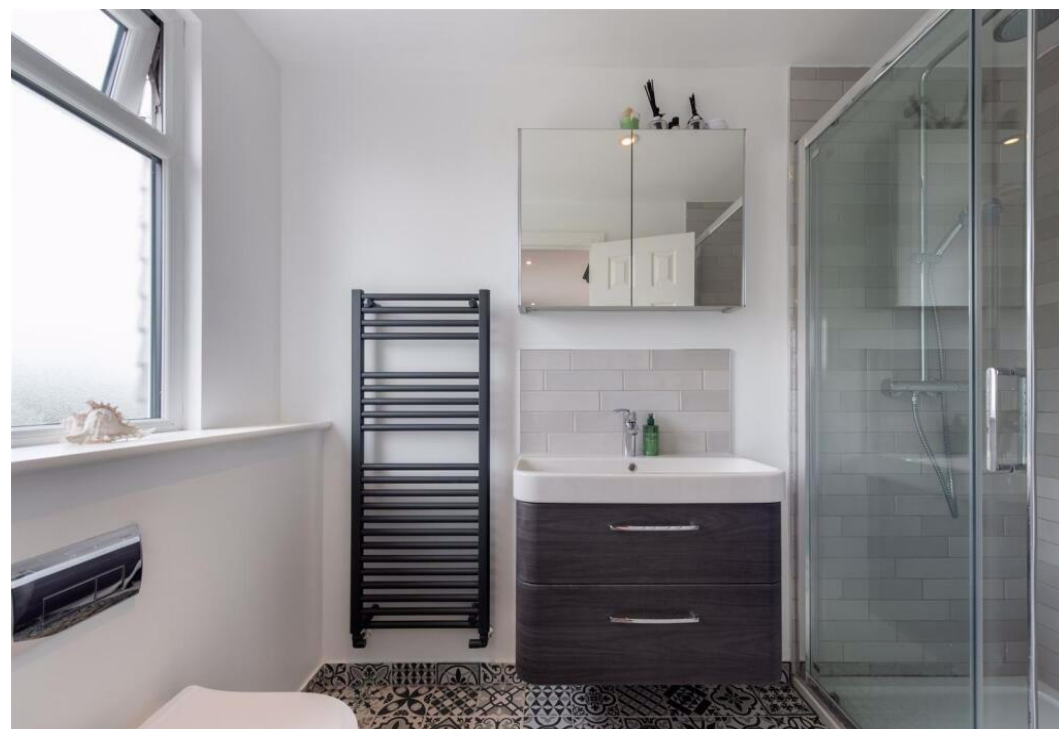
Walking distance to Eversley Primary School

and Highlands Secondary

Situated moments from Oakwood Park and local shops

**Excellent transport links via Southgate (Piccadilly Line)
and Winchmore Hill (mainline) stations.**

EPC - D







OAKWOOD CRESCENT, N21
Approx. Gross Internal Area
1688 Sq Ft - 156.82 Sq M
(Including Eaves Storage)
Approx. Gross Internal Area
1566 Sq Ft - 145.48 Sq M
(Excluding Eaves Storage)
GARAGE
Approx. Gross Internal Area
389 Sq Ft - 36.14 Sq M



SECOND FLOOR

