



Hampstead Way, Hampstead Garden Suburb, NW11

Freehold

£1,800,000



800 finchley road, hampstead garden suburb, london, nw11 7tj

telephone 020 8458 5000 facsimile 020 8209 2068

email [sales@litchfields.com](mailto:sales@litchfields.com) web [litchfields.com](http://litchfields.com)

offices also in highgate



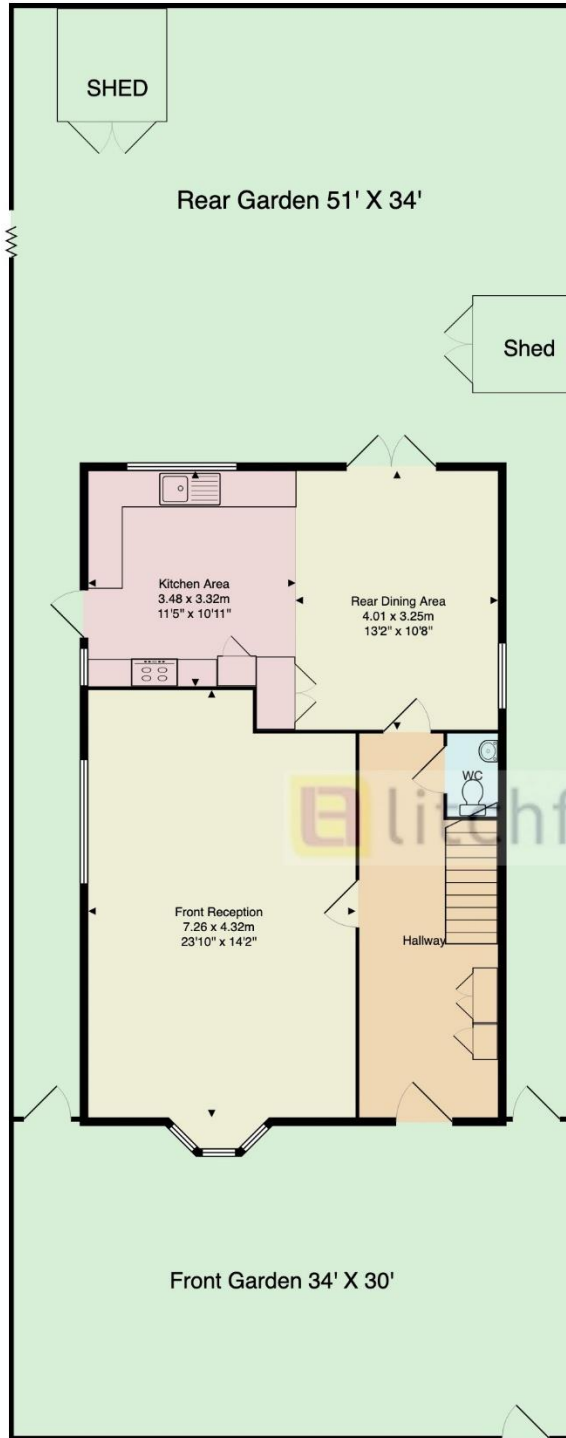
A beautiful and bright 4 bedroom detached home in a prime location. Nestled on a sought-after road close to the excellent amenities of both Temple Fortune and Golders Green, this charming four-bedroom detached house offers spacious, light-filled living throughout. The home boasts a generous double reception room, a large kitchen/diner ideal for family living and entertaining, and a well-maintained rear garden providing a perfect outdoor retreat. Rarely available on the market, this exceptional property combines comfort, style, and convenience in one of the area's most desirable locations. Early viewing is highly recommended.

4 bedrooms | Lounge/dining room | | Kitchen/ breakfast room | Bathroom | En suite wc | Guest wc | Lovely rear garden | EPC=TBA

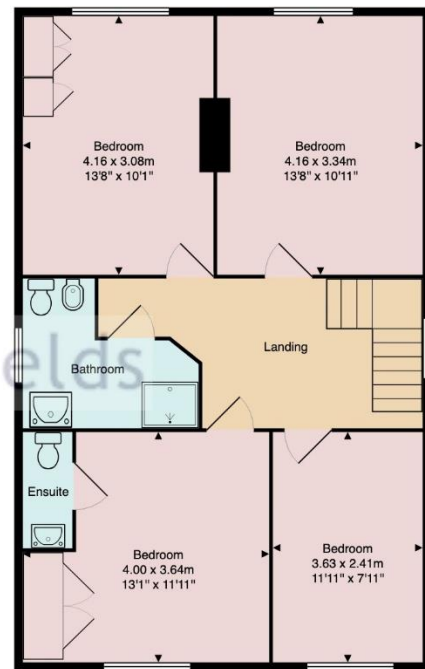




# Hampstead Way, London, NW11



Ground Floor



First Floor

Approx. Gross Internal Area: 139.5 m<sup>2</sup> ... 1502 ft<sup>2</sup>

All measurements and areas are approximate only.  
Dimensions are not to scale. This plan is for guidance only and must not be relied upon as a statement of fact.

Whilst every effort is made to ensure these details are accurate, all measurements given are approximate and for guidance only. We are unable to comment on the structure of the building or services and any investigations should be carried out by a qualified surveyor. We strongly advise you to ensure that all legal aspects are fully investigated by your solicitor prior to a purchase. We have not applied tests to any appliances or equipment and therefore cannot verify these are in good working order. We understand from the vendor that the fixtures and fittings listed are to be included in the sale price but these may be subject to negotiation.