



Neale Close, Hampstead Garden Suburb, N2

Weekly Rental Of £395



800 finchley road, hampstead garden suburb, london, nw11 7tj

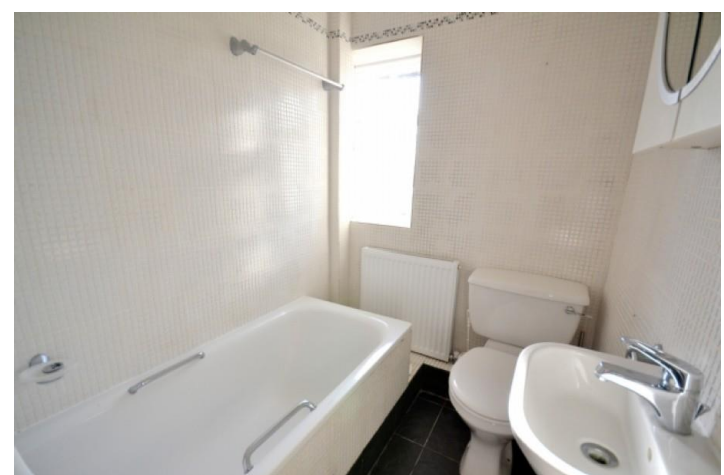
telephone 020 8458 5000 facsimile 020 8209 2068

email sales@litchfields.com web litchfields.com

offices also in crouch end & highgate

First floor purpose built maisonette in this character close off Ossulton Way which is an easy walk to East Finchley underground station. Private front door leads to hall with stairs rising to spacious open plan lounge/dining room with access to balcony and laminate flooring. Fully fitted kitchen with all appliances, mosaic tiled bathroom and two equal sized bedrooms both with fitted wardrobes. Private rear garden accessed down side passage. East End Road is a moments walk away with a good range of convenience stores, take away outlets, bars, dry cleaners & butcher. Unfurnished. **move in charges of £150 per applicant will apply to cover agreement creation and referencing charges. check-out cost will also apply.

2 Bed 1st Floor Maisonette | Popular Close | Private Entrance | Reception | Reception | Kitchen | Bathroom | Moments from East End Road Shops & Buses | Walking distance to East Finchley Tube & High Street | Private allocated garden | Unfurnished





For full details on all available properties, please visit our website;
www.litchfields.com or call our office on 020 8458 5000