



Willifield Way, Hampstead Garden Suburb, NW11
Leasehold
£425,000



800 finchley road, hampstead garden suburb, london, nw11 7tj

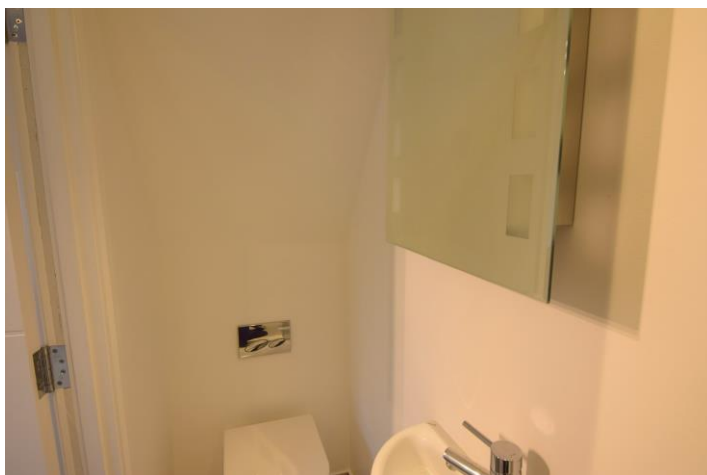
telephone 020 8458 5000 facsimile 020 8209 2068

email sales@litchfields.com web litchfields.com

offices also in highgate

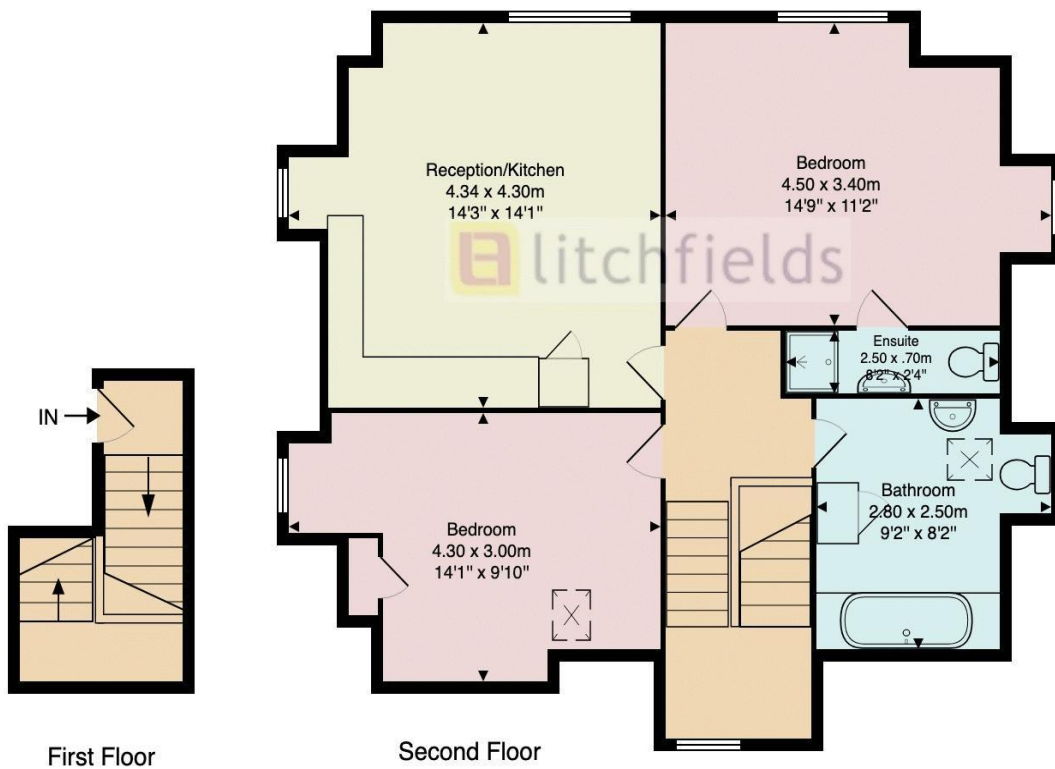
A recently refurbished two double bedroom, 2 bathroom furnished flat placed on the 2nd floor of this well maintained converted house located moments from the extensive shops, supermarkets, boutiques, cafes, restaurants & bus routes of the Finchley Road, Temple Fortune. Accessed from the side of the building entrance hall, open plan reception and fully fitted kitchen, master bedroom with en-suite shower room and wardrobes, further double bedroom and family bathroom. There are wood strip floors throughout. Garden Suburb Primary School is also a short walk away. EPC E.

Recently Refurbished | Luxury Two Double Bed Flat | Two Baths (1 En-Suite) | Open Plan Reception/Kitchen | Wood strip floors throughout | Moments from Temple Fortune Supermarkets, Restaurants & Shops | Extensive Bus Routes | Short walk to Garden Suburb Primary School | EPC E





Willifield Way, NW11



Approx. Gross Internal Area: 63.2 m² ... 680 ft²

All measurements and areas are approximate only.
Dimensions are not to scale. This plan is for guidance only and must not be relied upon as a statement of fact.

Whilst every effort is made to ensure these details are accurate, all measurements given are approximate and for guidance only. We are unable to comment on the structure of the building or services and any investigations should be carried out by a qualified surveyor. We strongly advise you to ensure that all legal aspects are fully investigated by your solicitor prior to a purchase. We have not applied tests to any appliances or equipment and therefore cannot verify these are in good working order. We understand from the vendor that the fixtures and fittings listed are to be included in the sale price but these may be subject to negotiation.