



Willifield Way, Hampstead Garden Suburb, NW11
Long Leasehold (approx. 882 years remaining)
£875,000



800 finchley road, hampstead garden suburb, london, nw11 7tj
telephone 020 8458 5000 facsimile 020 8209 2068
email sales@litchfields.com web litchfields.com
offices also in highgate

A larger than average, character 2 double bedroom end of terrace Grade II Listed cottage built in 1909 and designed by George Hubbard & Arthur Walter Moore. The property is superbly situated within a short walk to the shops, cafes and transport links of Temple Fortune and the lovely expanses of Big Wood. The property has the unusual and rare advantage of a single garage accessed via a shared driveway and also benefits from a beautifully maintained 95' rear garden. Viewing of this charming chain free house is highly recommended.

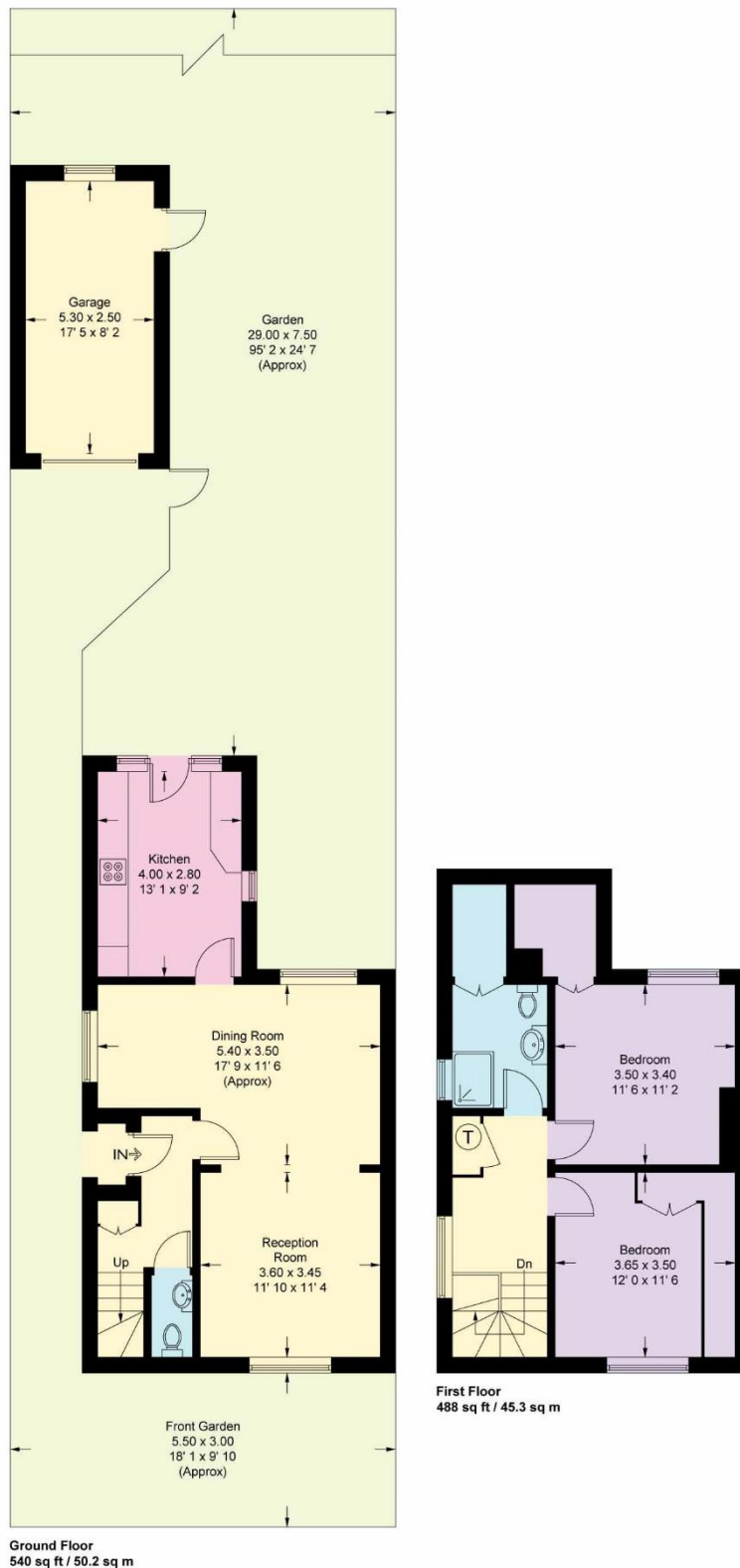
2 double bedrooms | Lounge/dining room | Kitchen | Bathroom | Downstairs wc | Garage | Shared driveway | 95' rear garden | EPC=D





Willifield Way

Approximate Gross Internal Area = 1028 sq ft / 95.5 sq m
Garage = 144 sq ft / 13.4 sq m



This plan is not to scale and must be used as layout guidance only. All measurements and areas are approximate and should not be relied upon to provide accurate information. This plan must not be relied upon when making property valuations, design considerations or any other such relevant decisions. We accept no responsibility or liability (whether in contract, tort or otherwise) in relation to any loss whatsoever arising from or in connection with any use of this plan or the adequacy, accuracy or completeness of it or any information within it.

Whilst every effort is made to ensure these details are accurate, all measurements given are approximate and for guidance only. We are unable to comment on the structure of the building or services and any investigations should be carried out by a qualified surveyor. We strongly advise you to ensure that all legal aspects are fully investigated by your solicitor prior to a purchase. We have not applied tests to any appliances or equipment and therefore cannot verify these are in good working order. We understand from the vendor that the fixtures and fittings listed are to be included in the sale price but these may be subject to negotiation.