



Bigwood Road, Hampstead Garden Suburb, NW11

Leasehold

£1,699,999



800 finchley road, hampstead garden suburb, london, nw11 7tj

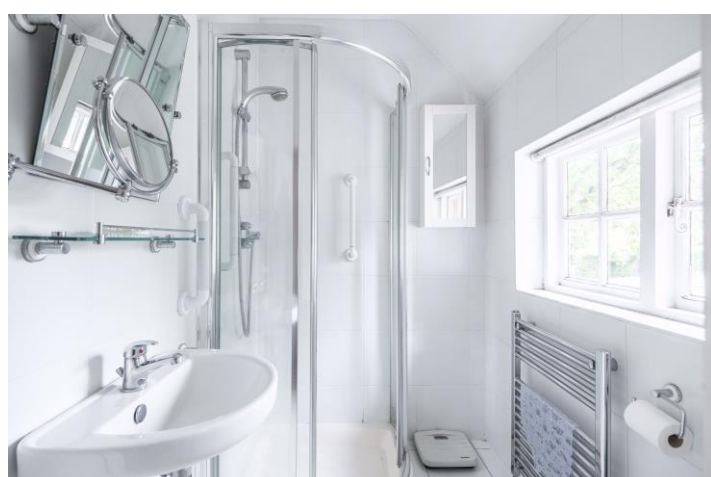
telephone 020 8458 5000 facsimile 020 8209 2068

email sales@litchfields.com web litchfields.com

offices also in highgate

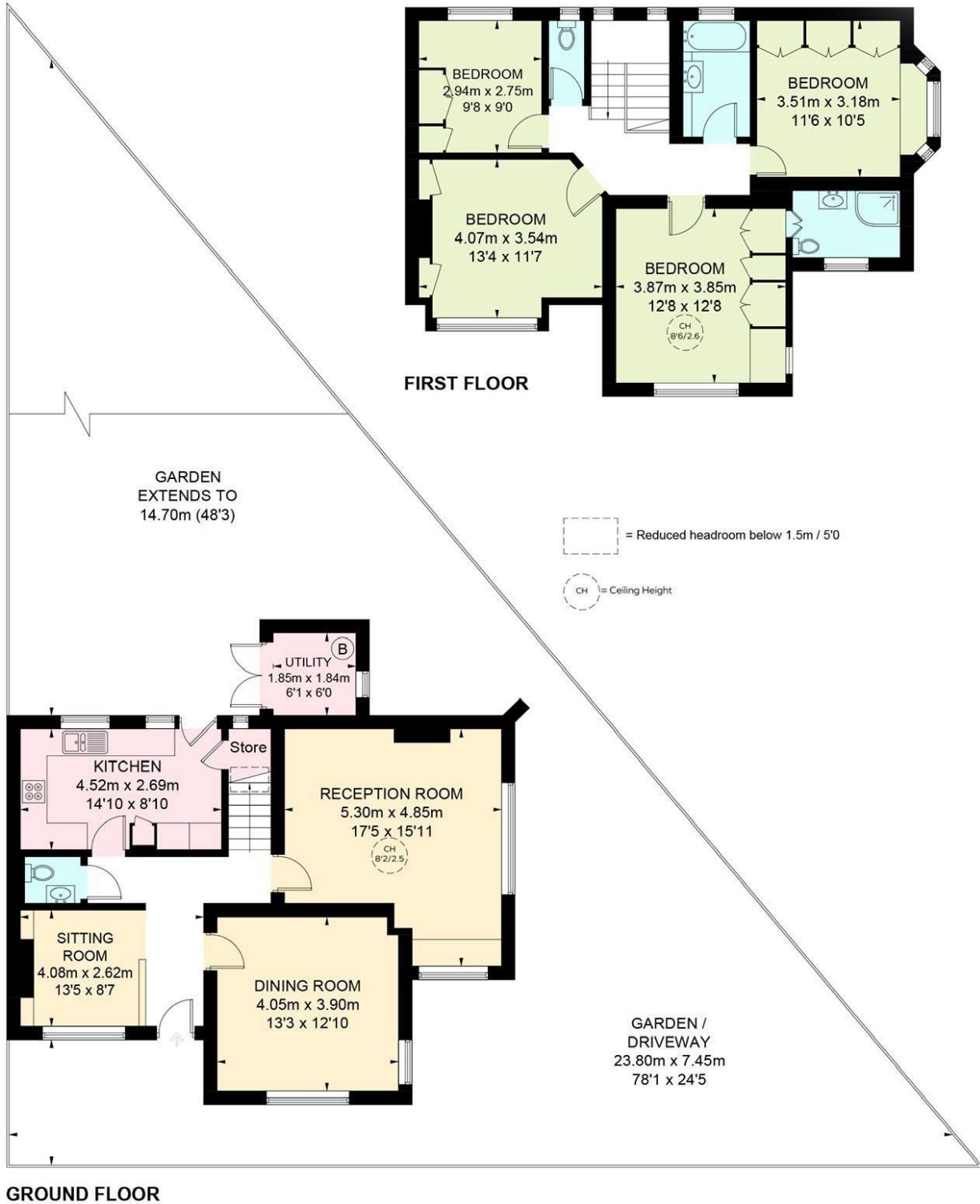
A lovely double-fronted semi-detached 4 bedroom family house, located on this quiet road in Hampstead Garden Suburb, just 0.2 miles from the highly regarded Henrietta Barnett Grammar School, 1 mile from both Golders Green Underground (Northern Line) and Temple Fortune and a moments walk to The Heath Extension. This splendid home is presented in good decorative condition throughout and boasts 2 separate reception rooms, a large hall/study area and 2 bathrooms (1 en suite). The delightful and secluded garden wraps around the property. At the front of the house there is a huge benefit of off street parking for 2 cars. Viewing of this fine home is highly recommended.

4 bedrooms | 2 bathrooms (1 en suite) | Lounge | Dining room | Hall/study | Kitchen | Downstairs wc | Utility cupboard | Off street parking for 2 cars | Front & rear gardens | EPC=TBA





Bigwood Road, NW11



Approximate Gross Internal Area
 Ground Floor = 842 sq ft / 78.2 sq m
 (Excluding Reduced Headroom)
 First Floor = 794 sq ft / 73.8 sq m
 Reduced Headroom = 5 sq ft / 0.5 sq m
 Total = 1641 sq ft / 152.5 sq m

This plan is for layout guidance only. Not drawn to scale unless stated. Windows and door openings are approximate. Whilst every care is taken in the preparation of this plan, please check all dimensions, shapes and compass bearings before making any decisions reliant upon them. (ID1128981)

Whilst every effort is made to ensure these details are accurate, all measurements given are approximate and for guidance only. We are unable to comment on the structure of the building or services and any investigations should be carried out by a qualified surveyor. We strongly advise you to ensure that all legal aspects are fully investigated by your solicitor prior to a purchase. We have not applied tests to any appliances or equipment and therefore cannot verify these are in good working order. We understand from the vendor that the fixtures and fittings listed are to be included in the sale price but these may be subject to negotiation.