



Temple Fortune Hill, Hampstead Garden Suburb, NW11

Freehold

£1,195,000



800 finchley road, hampstead garden suburb, london, nw11 7tj

telephone 020 8458 5000 facsimile 020 8209 2068

email sales@litchfields.com web litchfields.com

offices also in highgate

A very pretty and charming Grade II Listed house featuring parking and a garage. Built in 1908 and designed by renowned architects Parker and Unwin. Situated within a short walk to the shops, cafes and transport facilities of Temple Fortune, the Heath Extension and also Big Wood, this lovely property is presented in very good decorative condition and has the benefit of 2 separate reception rooms, a large kitchen/breakfast room plus 3 bright bedrooms. The rear garden is lovely and backs directly onto allotments. Early viewing highly advised.

3 bedrooms | Lounge | Dining room/study | Kitchen/breakfast room | Bathroom | Downstairs wc | Front & rear gardens | Off street parking | Garage | EPC=D



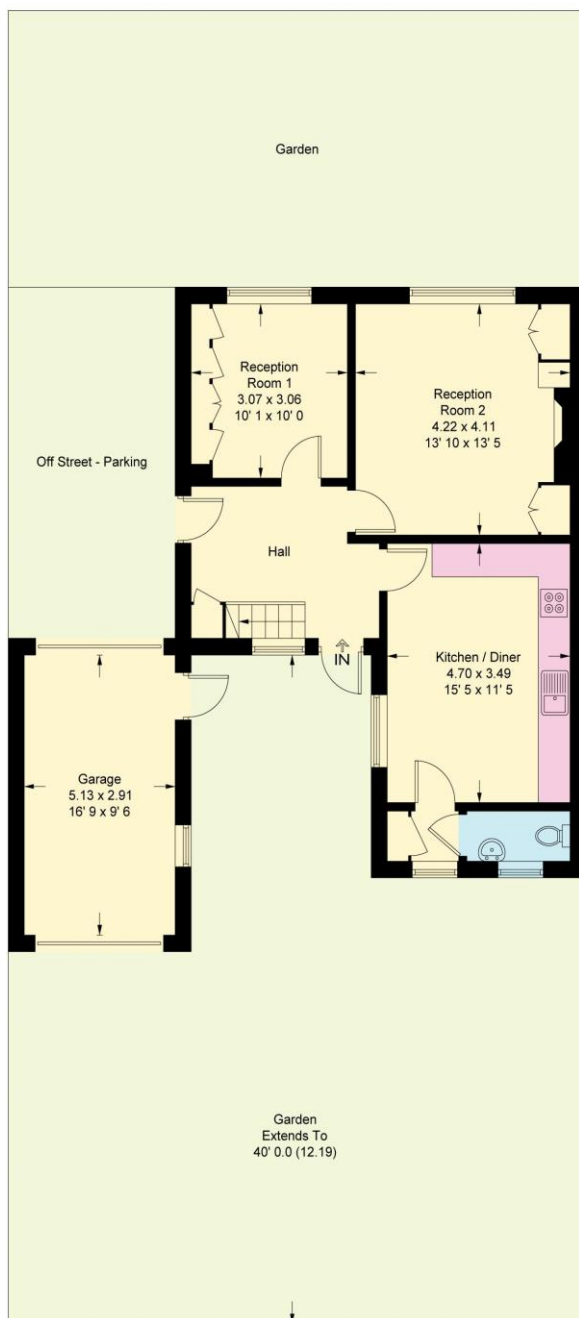


Temple Fortune Hill

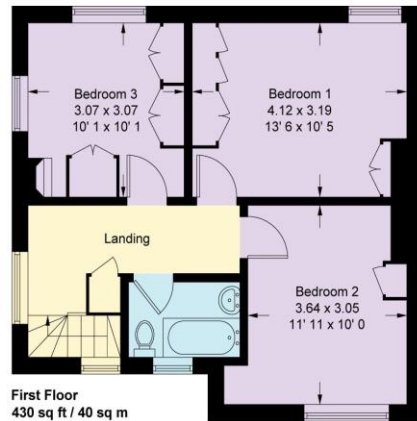
Approximate Gross Internal Area = 1063 sq ft / 98.8 sq m

Garage = 160 sq ft / 14.9 sq m

Total = 1223 sq ft / 113.7 sq m



Ground Floor
633 sq ft / 58.8 sq m (Excluding Garage)



First Floor
430 sq ft / 40 sq m

This plan is not to scale and must be used as layout guidance only. All measurements and areas are approximate and should not be relied upon to provide accurate information. This plan must not be relied upon when making property valuations, design considerations or any other such relevant decisions. We accept no responsibility or liability (whether in contract, tort or otherwise) in relation to any loss whatsoever arising from or in connection with any use of this plan or the adequacy, accuracy or completeness of it or any information within it.