



Waterlow Court, Hampstead Garden Suburb, NW11

Share of Freehold

£599,999



800 finchley road, hampstead garden suburb, london, nw11 7tj

telephone 020 8458 5000 facsimile 020 8209 2068

email sales@litchfields.com web litchfields.com

offices also in highgate

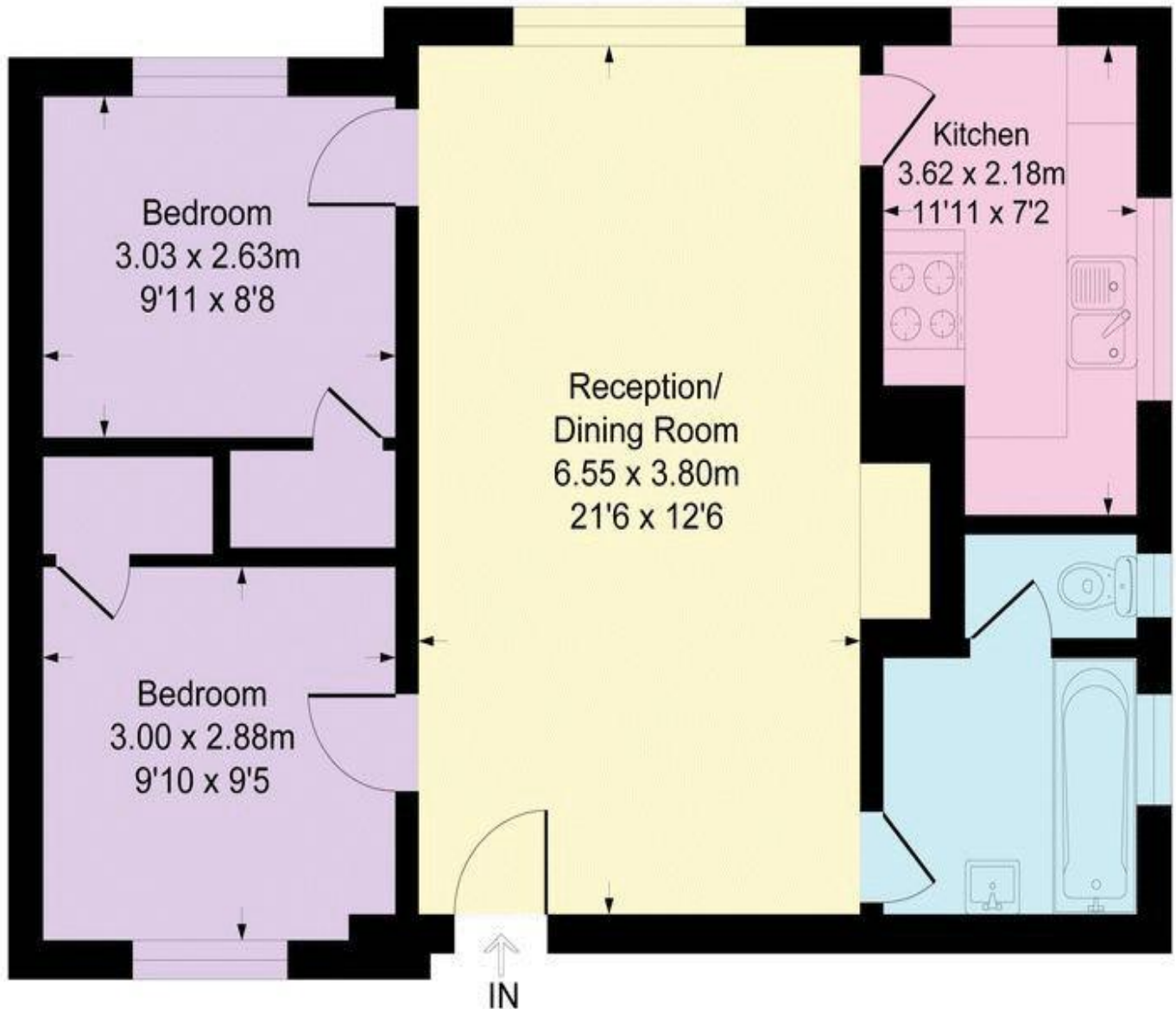
Waterlow Court is wonderful enclave of flats designed in 1904 by architect M H Baillie Scott, his only multiple housing scheme in Hampstead Garden Suburb. Built in 1908 as a communal residence for professional single women by the Improved Industrial Dwellings Company Ltd, whose chairman was Lord Sidney Waterlow, this Grade II* Listed building comprised 50 individual flats of 3 to 5 rooms, with a communal dining room and small Common Room, housekeeper's and servants' accommodation and a kitchen where communal meals were prepared. This particular property is a 2 bedroom first floor flat with a good size lounge/diner, larger than average kitchen and bathroom. There are also beautifully maintained communal gardens.

2 bedrooms | Lounge/dining room | Kitchen | Bathroom | Lovely communal gardens |
EPC=TBA



Waterlow Close, NW11

Approximate Gross Internal Floor Area = 62.3 sq m / 672 sq ft



First Floor

This Plan is not to scale and must be used as layout guidance only. All measurements and areas are approximate and should not be relied upon to provide accurate information. This plan must not be relied upon when making property valuations, design considerations or any other such relevant decisions. We accept no responsibility or liability (whether in contract, tort or otherwise) in relation to any loss whatsoever arising from or in connection with any use of this plan or the adequacy or completeness of it or any information within it.

Whilst every effort is made to ensure these details are accurate, all measurements given are approximate and for guidance only. We are unable to comment on the structure of the building or services and any investigations should be carried out by a qualified surveyor. We strongly advise you to ensure that all legal aspects are fully investigated by your solicitor prior to a purchase. We have not applied tests to any appliances or equipment and therefore cannot verify these are in good working order. We understand from the vendor that the fixtures and fittings listed are to be included in the sale price but these may be subject to negotiation.