



Barnett Homestead, Hampstead Garden Suburb, NW11

Leasehold

£289,000



800 finchley road, hampstead garden suburb, london, nw11 7tj

telephone 020 8458 5000 facsimile 020 8209 2068

email sales@litchfields.com web litchfields.com

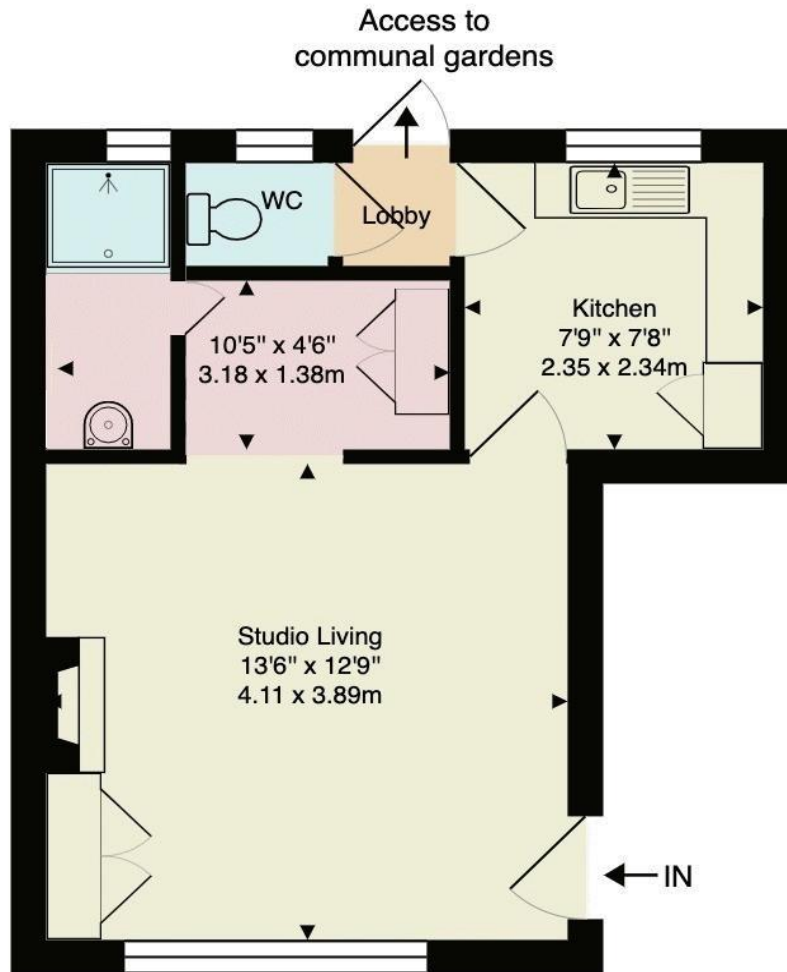
offices also in crouch end & highgate

A ground floor studio flat placed in this small character Grade II Listed purpose built block built in 1916 and designed by John Soutar. This charming building is situated in a quiet and picturesque turning just off Erskine Hill only a short walk to the ample amenities of Temple Fortune. The property has been refurbished and is presented in excellent internal condition benefitting from well maintained communal gardens. Sold chain free.

Grade II Listed | Studio | Shower room | Kitchen | Separate wc | Communal gardens | Picturesque turning



Barnett Homestead NW11



Ground Floor

Approx. Gross Internal Area: 320 ft² ... 29.7 m²

All measurements and areas are approximate only.
Dimensions are not to scale. This plan is for guidance
only and must not be relied upon as a statement of fact.
(c) Peninsula Surveys Ltd

Whilst every effort is made to ensure these details are accurate, all measurements given are approximate and for guidance only. We are unable to comment on the structure of the building or services and any investigations should be carried out by a qualified surveyor. We strongly advise you to ensure that all legal aspects are fully investigated by your solicitor prior to a purchase. We have not applied tests to any appliances or equipment and therefore cannot verify these are in good working order. We understand from the vendor that the fixtures and fittings listed are to be included in the sale price but these may be subject to negotiation.