



Temple Fortune Court, Hampstead Garden Suburb, NW11

Leasehold

£695,000



800 finchley road, hampstead garden suburb, london, nw11 7tj

telephone 020 8458 5000 facsimile 020 8209 2068

email sales@litchfields.com web litchfields.com

offices also in crouch end & highgate

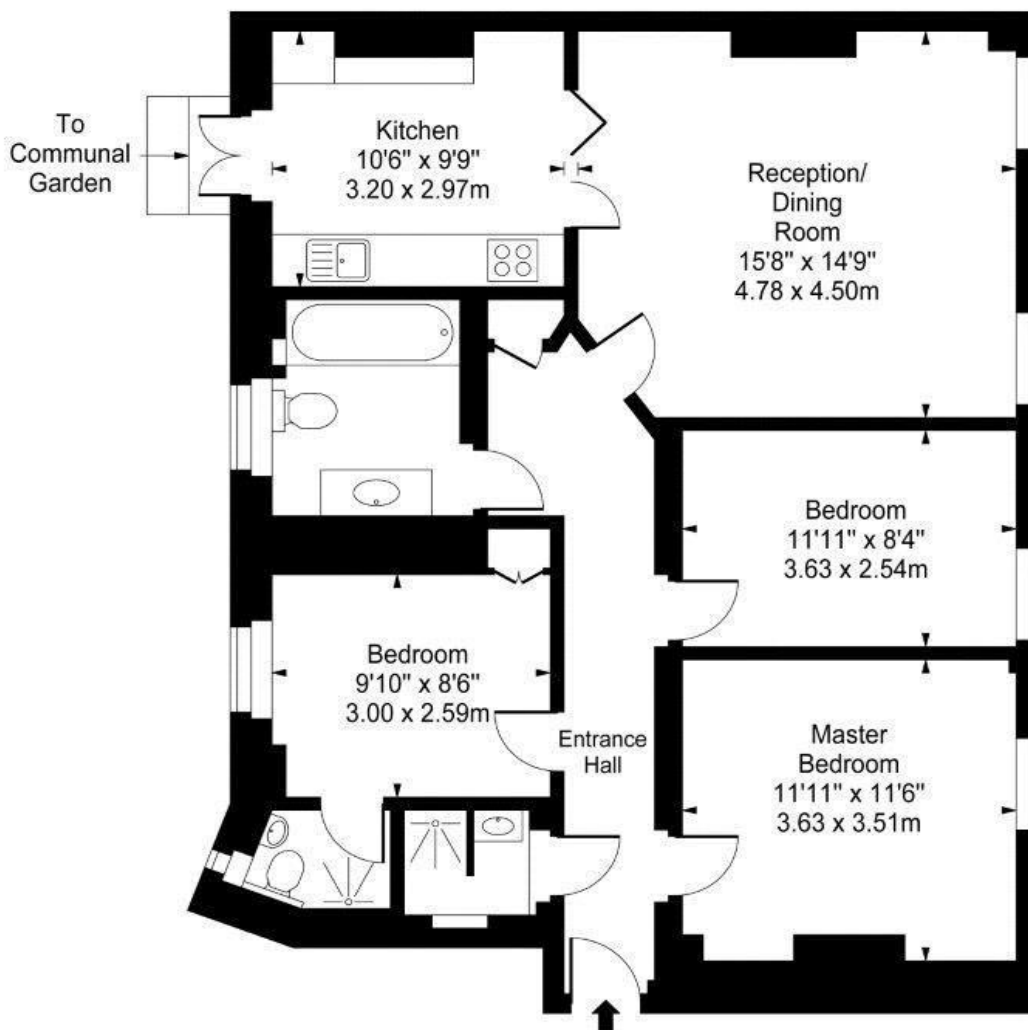
A generous size and bright ground floor flat set within this lovely Grade II Listed purpose built block built in 1911 and designed by Parker & Unwin. Situated within a moments walk to the ample cafes, shops and transport links of Temple Fortune, this delightful property is presented in excellent decorative condition benefiting from well maintained communal rear gardens, with direct access via the kitchen. Viewing of this fine property is recommended.

3 bedrooms | Reception room | Kitchen | Family bathroom | 2 shower rooms (1 en suite) | Well maintained communal gardens | EPC=E





**Temple Fortune Court,
Temple Fortune Lane, NW11**



Ground Floor

Approx Gross Internal Area 940 Sq Ft - 87.33 Sq M

For Illustration Purposes Only - Not To Scale

www.goldlens.co.uk

Prepared for Chestertons

Ref. No. 007695Ga

Whilst every effort is made to ensure these details are accurate, all measurements given are approximate and for guidance only. We are unable to comment on the structure of the building or services and any investigations should be carried out by a qualified surveyor. We strongly advise you to ensure that all legal aspects are fully investigated by your solicitor prior to a purchase. We have not applied tests to any appliances or equipment and therefore cannot verify these are in good working order. We understand from the vendor that the fixtures and fittings listed are to be included in the sale price but these may be subject to negotiation.