



Erskine House, Homesfield, NW11

Weekly Rental Of £575



800 finchley road, hampstead garden suburb, london, nw11 7tj

telephone 020 8458 5000 facsimile 020 8209 2068

email sales@litchfields.com web litchfields.com

offices also in crouch end & highgate

A superb, larger than average newly decorated, character two double bedroom, two bath flat, placed on the 1st floor of this charming purpose built block. Set in a tranquil & picturesque cul-de-sac off Erskine Hill, with use of own share of private garden to the rear. There is the added benefit of a large private balcony to the front and a loft/storage area with lighting spanning the length of the flat. Comprising entrance hallway, master bedroom with en-suite shower room, further double bedroom, both with fitted wardrobes, family bathroom, corner aspect reception room, fully fitted kitchen with new flooring and ceramic hob. Temple Fortune Shops, supermarkets, cafes and bus routes are a short 5 minute walk away. The H2 Bus route is on your doorstep! Early viewing is strongly recommended! Unfurnished.



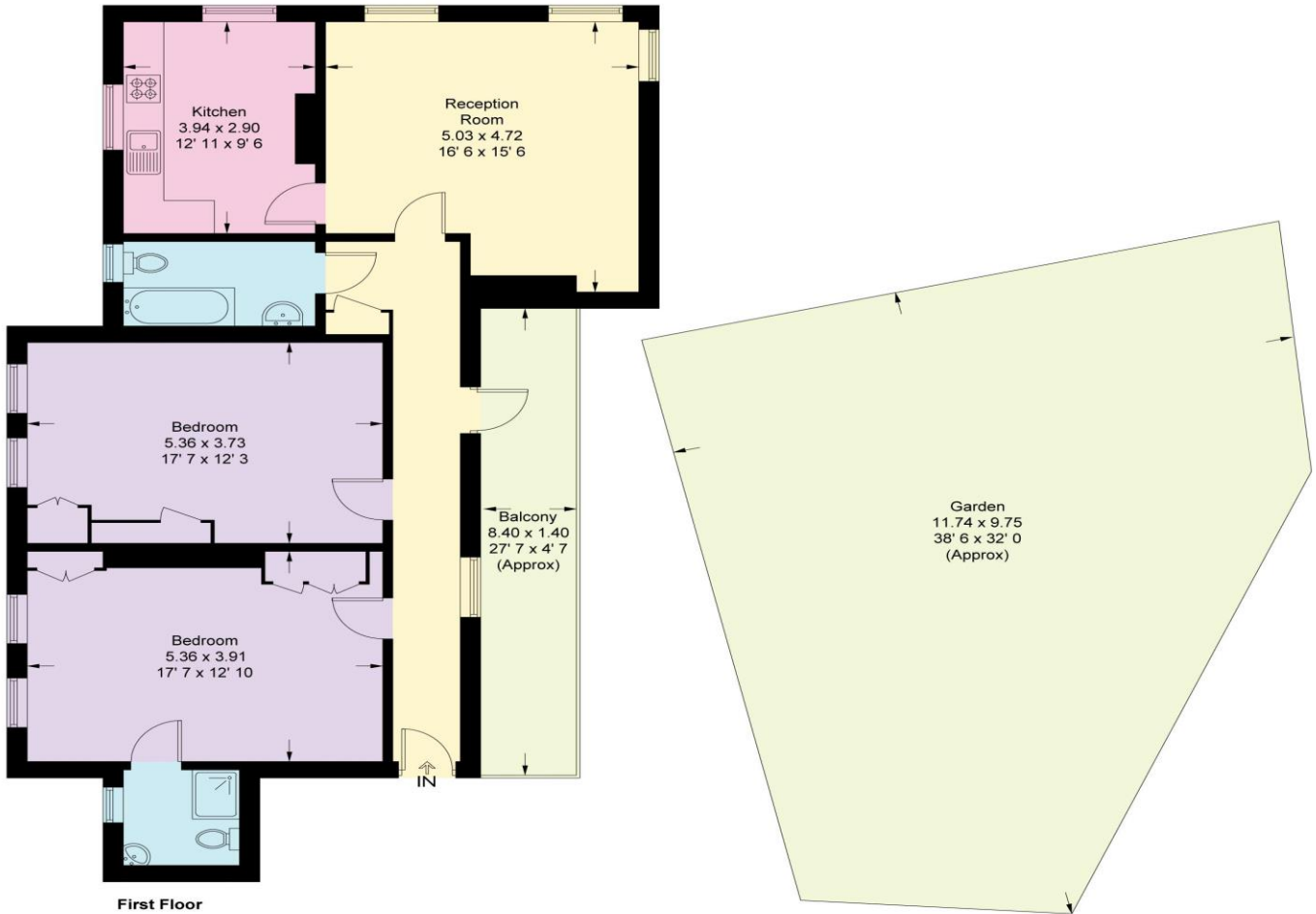
En-suite to Master Bedroom

- 2 Double Bedrooms
- 2 Bathrooms (1 en-suite)
- Kitchen
- Lounge
- First Floor
- Large Balcony
- Own share of private rear garden
- Close Temple Fortune shops & buses
- Close to Little Wood and Big Wood
- Unfurnished
- Available Now



Erskine House

Approximate Gross Internal Area = 1041 sq ft / 96.7 sq m



This plan is not to scale and must be used as layout guidance only. All measurements and areas are approximate and should not be relied upon to provide accurate information. This plan must not be relied upon when making property valuations, design considerations or any other such relevant decisions. We accept no responsibility or liability (whether in contract, tort or otherwise) in relation to any loss whatsoever arising from or in connection with any use of this plan or the adequacy, accuracy or completeness of it or any information within it.