



Rotherwick Road, Hampstead Garden Suburb, NW11

Freehold

£1,975,000



800 finchley road, hampstead garden suburb, london, nw11 7tj

telephone 020 8458 5000 facsimile 020 8209 2068

email sales@litchfields.com web litchfields.com

offices also in crouch end & highgate

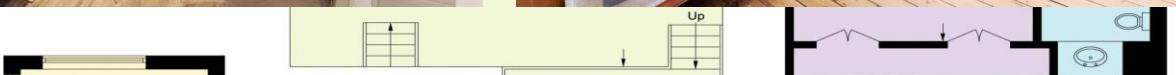
A large and substantial end-of-terrace family house superbly located being moments from the Heath Extension and Golders Green Underground. This spacious home is arranged over four floors and offers large and flexible family accommodation. A recently installed 'Smallbone' kitchen adds to the many wonderful features this lovely home offers, which includes off street parking and a south east facing garden. Viewing strongly advised.

Four Bedrooms | Two Bathrooms | Drawing Room | Kitchen/Breakfast room | Family Room | Dining Room | Lounge | Utility room | Cloakroom | Off street parking | Close to Heath Extension | Moments from Golders Green Underground | South East facing rear garden



vic
Are

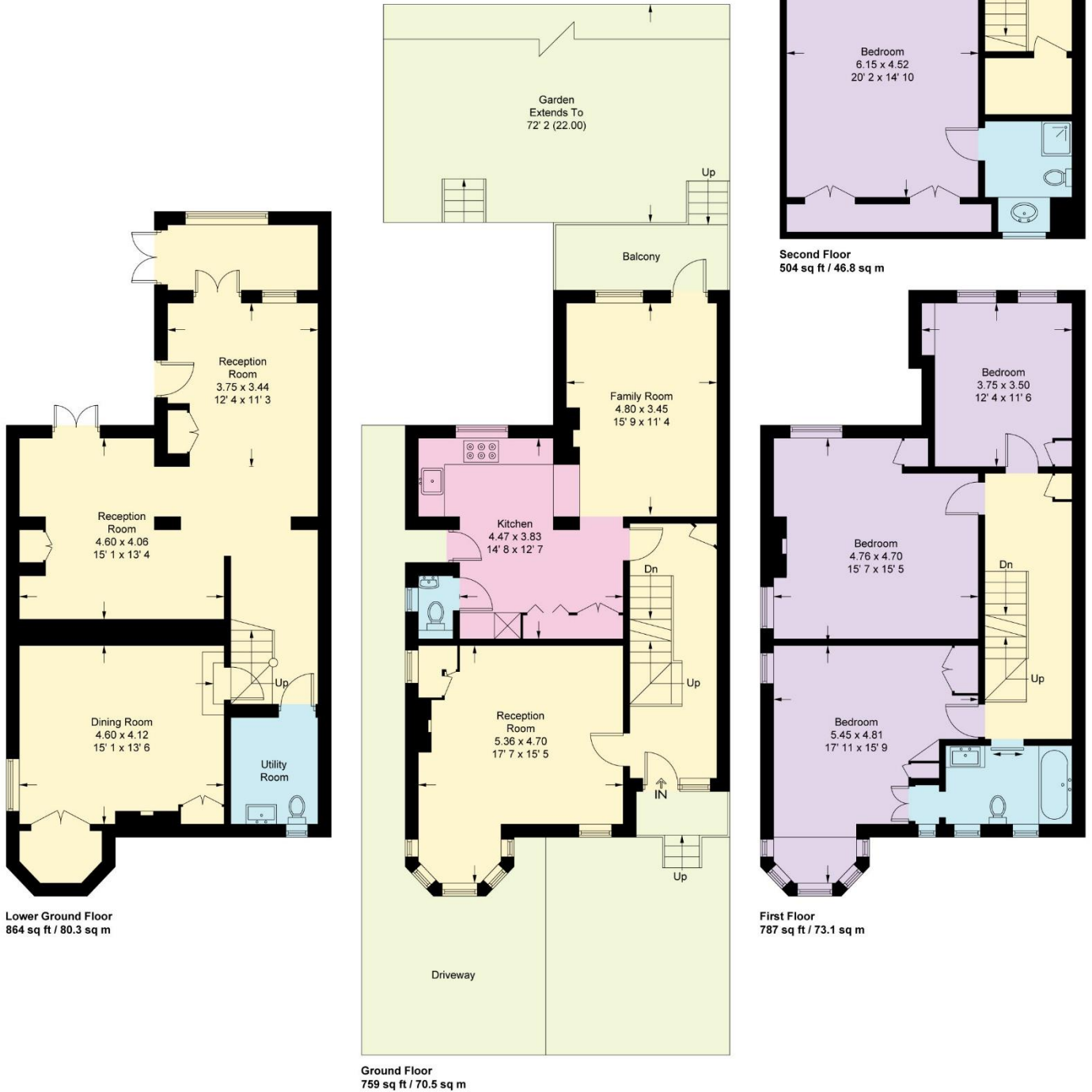
Gard
xtend
* 2 (2)





Rotherwick Road

Approximate Gross Internal Area = 2914 sq ft / 270.7 sq m



This plan is not to scale and must be used as layout guidance only. All measurements and areas are approximate and should not be relied upon to provide accurate information. This plan must not be relied upon when making property valuations, design considerations or any other such relevant decisions. We accept no responsibility or liability (whether in contract, tort or otherwise) in relation to any loss whatsoever arising from or in connection with any use of this plan or the adequacy, accuracy or completeness of it or any information within it.

Whilst every effort is made to ensure these details are accurate, all measurements given are approximate and for guidance only. We are unable to comment on the structure of the building or services and any investigations should be carried out by a qualified surveyor. We strongly advise you to ensure that all legal aspects are fully investigated by your solicitor prior to a purchase. We have not applied tests to any appliances or equipment and therefore cannot verify these are in good working order. We understand from the vendor that the fixtures and fittings listed are to be included in the sale price but these may be subject to negotiation.