



Birnbeck Court, Temple Fortune, NW11

Leasehold

£199,000



800 finchley road, hampstead garden suburb, london, nw11 7tj

telephone 020 8458 5000 facsimile 020 8209 2068

email sales@litchfields.com web litchfields.com

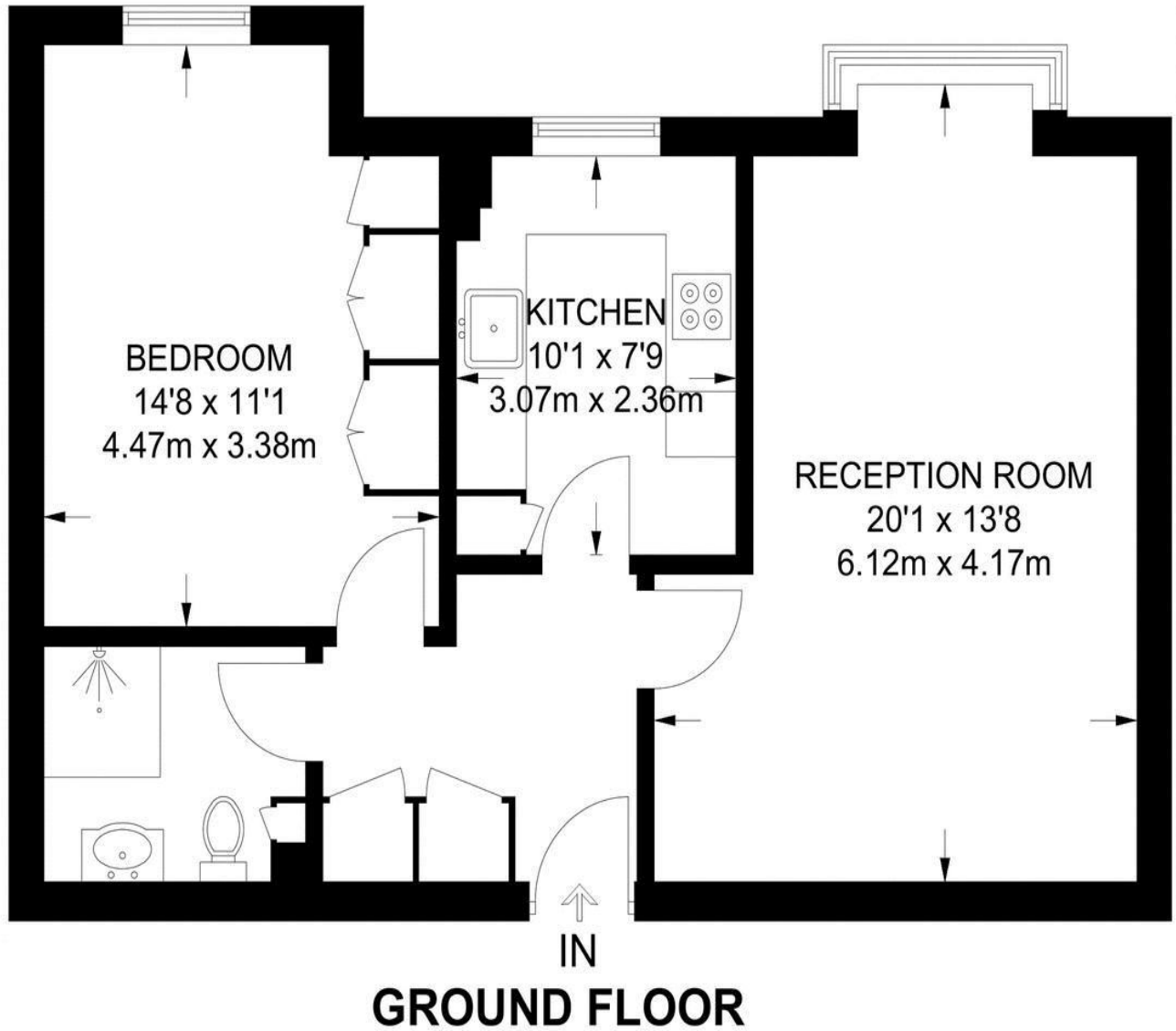
offices also in crouch end & highgate

***WARDEN ASSISTED BLOCK - FOR AGE 55 PLUS ONLY! OVER 55's ONLY.** The ground floor flat consisting of one double bedroom, a shower room, a reception room, and a kitchen. It is situated in a warden assisted block that was built in 1985 and is exclusively for individuals aged 55 and above. The property is conveniently located near the various amenities of Temple Fortune. Additional features include non-allocated off-street parking, well-kept communal gardens, a communal residents lounge, 24-hour resident management staff, and a Careline alarm service.

1 double bedroom | Lounge | Kitchen | Bathroom/wc | Ground floor | *WARDEN ASSISTED BLOCK - FOR AGE 55 PLUS ONLY! | Close to transport & shops | EPC=C



APPROXIMATE FLOOR AREA = 597 SQ FT / 55.5 SQ M
INCLUDING LIMITED USE AREA (3 SQ FT / 0.3 SQ M)



Whilst every effort is made to ensure these details are accurate, all measurements given are approximate and for guidance only. We are unable to comment on the structure of the building or services and any investigations should be carried out by a qualified surveyor. We strongly advise you to ensure that all legal aspects are fully investigated by your solicitor prior to a purchase. We have not applied tests to any appliances or equipment and therefore cannot verify these are in good working order. We understand from the vendor that the fixtures and fittings listed are to be included in the sale price but these may be subject to negotiation.